



TRUE PUBLIC MARINA REQUIREMENTS

The following information will be used to determine the classification of marinas at the projects. To be classified as a **True Public Marina**, the facility must meet all of the requirements in sections 1 - 3. Section 4 identifies the application fee and security deposit to be paid.

1. No predetermination of user groups for any of the existing or proposed land and water-based facilities.
 - a. No Residential Marina Facility access (existing or proposed) except those existing marina facilities that are characteristically operated as True Public Marinas although they allow Residential Marina-type access on a very limited basis. These existing marinas may be afforded the same considerations provided new True Public Marina facilities if the number of wet slips and dry storage bays dedicated for Residential Marina-type access is $\leq 10\%$ of the total number of wet slips and dry storage bays within the marina facility and any considerations are approved by DE-LS. This exception only applies to the very limited number of existing marina facilities that meet the $\leq 10\%$ requirement as of 1/1/06.
 - b. No membership requirements
 - c. Transient services do not require wet or dry storage rental
2. Existing and/or proposed facilities will provide land and water based recreation services for transient users at less than or equal to a reasonable and customary fee.
 - a. Services are available for transient users
 - b. Offers services for lake and land based users
3. Provides publicly available marine pump-out and restroom facilities.
4. Application filing fee and security deposit reductions
 - a. If adding only the following type of facilities; courtesy dock, hiking trail, wildlife viewing , gas dock, fishing pier, boat ramp, swimming area, beach, boat repair/servicing, public restrooms or any other truly public service, then the application fee and security deposit will be reduced by 100%.
 - b. If adding facilities that will be rented for greater than 14 days, but less than or equal to 365 days, there will be a 50% reduction in the application fee and security deposit.
 - c. If the plan is the same as b., but also includes adding more types of items in 2 a., then the application fee and security deposit will be reduced by 100%.

SHORELINE STABILIZATION TECHNIQUE SELECTION PROCESS

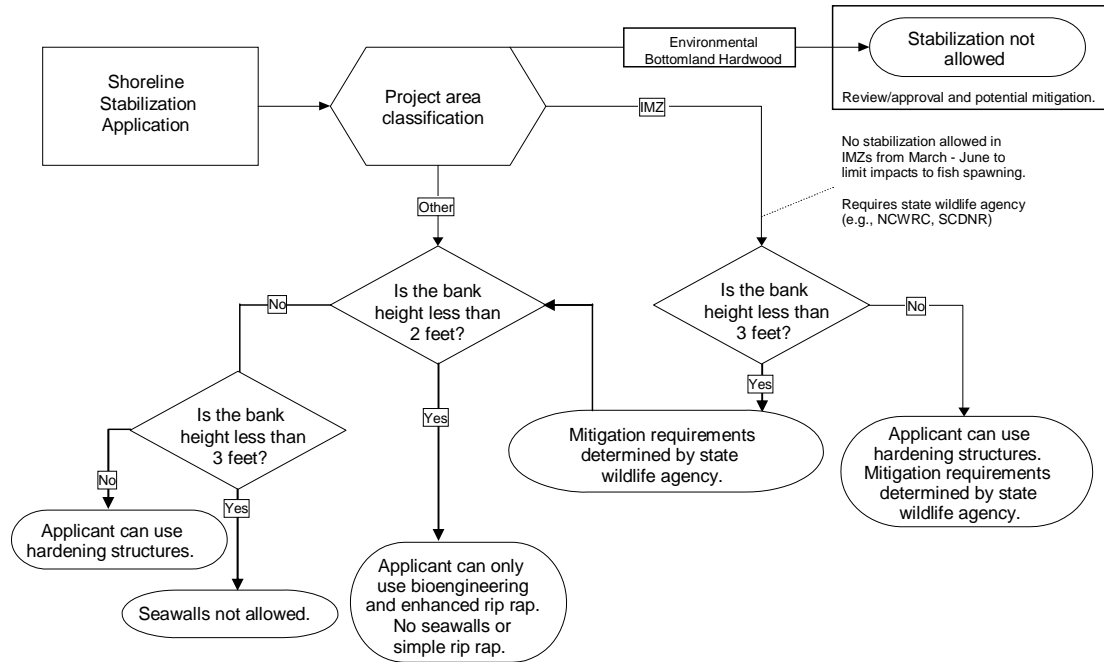


Figure 5A-1

(intentionally blank)