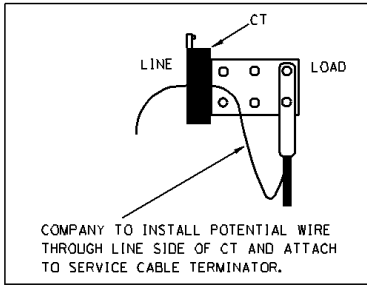


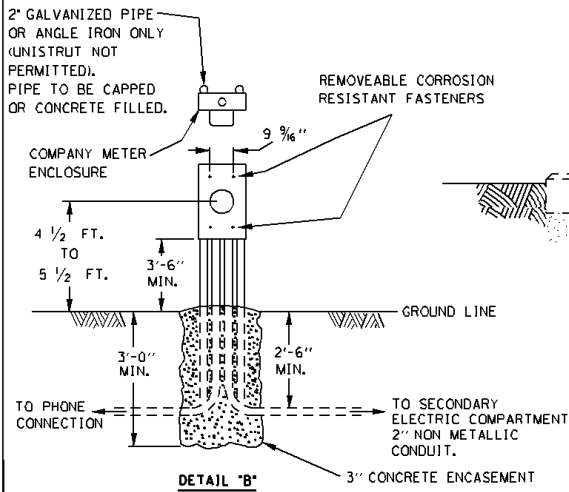
627

REVISED 4/07

208Y/120 VOLT OR 480Y/277 VOLT , THREE-PHASE, FOUR-WIRE PADMOUNT METERING SERVING A SINGLE CUSTOMER ONLY (GREATER THAN 200 AMPS BUT NOT EXCEEDING 3000 AMPS)



DETAIL "A"



DETAIL "B"

PRIMARY ELECTRIC COMPARTMENT SECONDARY ELECTRIC COMPARTMENT

FOR INSTALLATIONS WHERE THE TOTAL CONDUIT LENGTH, INCLUDING BENDS, EXCEEDS 25', CONTACT POWER DELIVERY FOR ASSISTANCE.

SEE DETAIL "A"

INSTRUMENT TYPE TRANSFORMER TO BE FURNISHED & INSTALLED BY THE COMPANY

TRANSFORMER RATED METER SOCKET FURNISHED BY THE COMPANY & INSTALLED BY THE CUSTOMER. (MUST BE PLUMB).

OUTSIDE BUILDING WALL OR SUPPORT STRUCTURE.

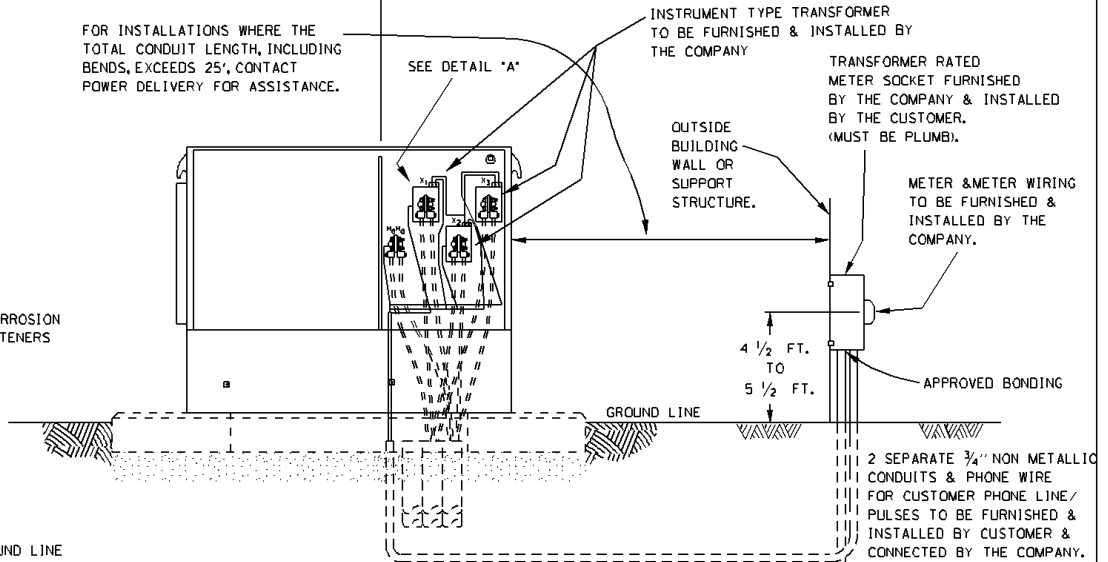
METER & METER WIRING TO BE FURNISHED & INSTALLED BY THE COMPANY.

4 1/2 FT. TO 5 1/2 FT.

APPROVED BONDING

2 SEPARATE 3/4" NON METALLIC CONDUITS & PHONE WIRE FOR CUSTOMER PHONE LINE/ PULSES TO BE FURNISHED & INSTALLED BY CUSTOMER & CONNECTED BY THE COMPANY. MUST BE ACCESSIBLE TO A TELEPHONE LINE.

TO INSIDE BUILDING WALL.



FRONT VIEW- DOORS REMOVED

CUSTOMER TO INSTALL A #10 AWG COPPER GREEN INSULATED BONDING CONDUCTOR. IT MUST BE INSTALLED IN THE METERING CONDUIT OF SUFFICIENT LENGTH TO MAKE BONDING CONNECTIONS INSIDE THE METERING ENCLOSURE AND PADMOUNT TRANSFORMER.

2" NON METALLIC CONDUIT INSTALLED BY CUSTOMER.