

626

REVISED 4/07

**** 208Y/120 VOLT OR 240/120 VOLT, THREE-PHASE, FOUR-WIRE, INDOOR (NOT EXCEEDING 200 AMPERES) ***

**** HIGHER PHASE TO GROUND CONDUCTOR (IDENTIFIED IN ORANGE) MUST BE TERMINATED IN THIS POSITION IN THE METER BASE FOR 240/120V THREE-PHASE, FOUR WIRE SERVICES. PLEASE CONTACT POWER DELIVERY FOR AVAILABILITY.**

*** AN INDOOR LOCATION OF A METER SOCKET IS NOT PERMITTED ON NEW INSTALLATIONS, UNLESS MANDATED BY A COMMUNITY ORDINANCE.**

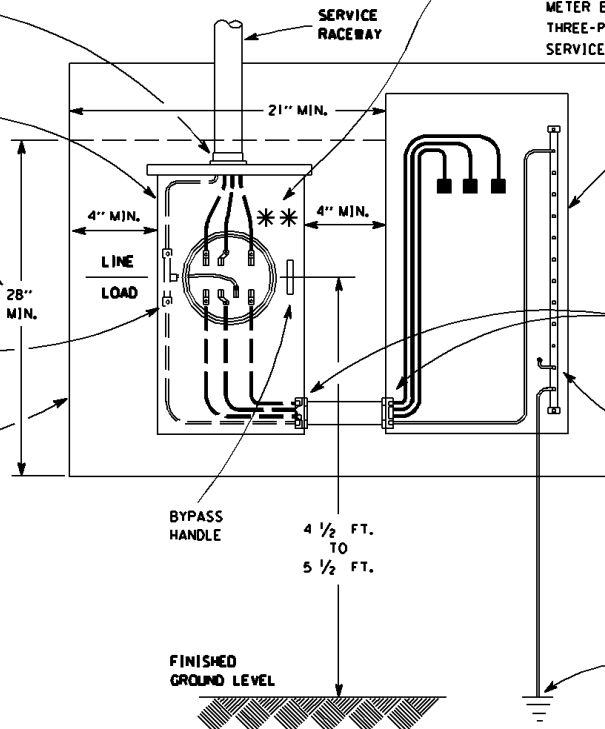
BONDING OF A METALLIC SERVICE RACEWAY IS PERMITTED BY USING THE THREADED HUB ON THE METER SOCKET.

SEVEN-TERMINAL POLYPHASE HIGH CAPACITY METER SOCKET EQUIPPED WITH A BYPASS HANDLE IS FURNISHED & INSTALLED BY THE CUSTOMER AND MUST BE MOUNTED PLUMB.

A CLEAR SPACE AT LEAST 21" WIDE BY 28" HIGH MUST BE AVAILABLE FOR THE METER SOCKET.

THE GROUNDED SERVICE NEUTRAL CONDUCTOR CONNECTED TO THE NEUTRAL CONNECTOR IN THE METER SOCKET MUST BOND THE SOCKET TO THE SERVICE GROUNDING SYSTEM.

WHERE REQUIRED THE SERVICE EQUIPMENT BOARD MUST BE MOUNTED PLUMB. (SEE ARTICLE 508)



THE SERVICE DISCONNECTING MEANS AND OVERCURRENT PROTECTION FURNISHED AND INSTALLED BY THE CUSTOMER, THE GROUNDED SERVICE NEUTRAL CONDUCTOR MUST TERMINATE IN THE SERVICE DISCONNECTING MEANS ENCLOSURE.

WHEN ALUMINUM CONDUCTORS ARE INSTALLED ALL CONNECTIONS IN THE METER SOCKET MUST BE PROPERLY COATED WITH AN INHIBITOR COMPOUND. IT IS HIGHLY RECOMMENDED TO USE THE INHIBITOR COMPOUND ON THE CONDUCTOR CONNECTIONS IN THE SERVICE DISCONNECT(S) OR SERVICE PANELBOARD.

LOCKNUTS AND APPROVED FITTINGS OR BONDING BUSHINGS ARE REQUIRED WHEN INSTALLING METALLIC OR NON-METALLIC NIPPLES. BONDING OF A METALLIC NIPPLE IS REQUIRED.

THE ENCLOSURE IS BONDED TO THE SERVICE SYSTEM GROUND BY A MAIN BONDING JUMPER OR A BONDING SCREW.

ALL SERVICE CONDUCTORS CONNECTIONS IN THE METER SOCKET & SERVICE DISCONNECTS OR SERVICE PANELBOARDS MUST BE TORQUED TO THE MANUFACTURER'S SPECIFICATIONS LABEL FOUND ON THE EQUIPMENT.

APPROVED GROUNDING (SEE DRAWING 636)