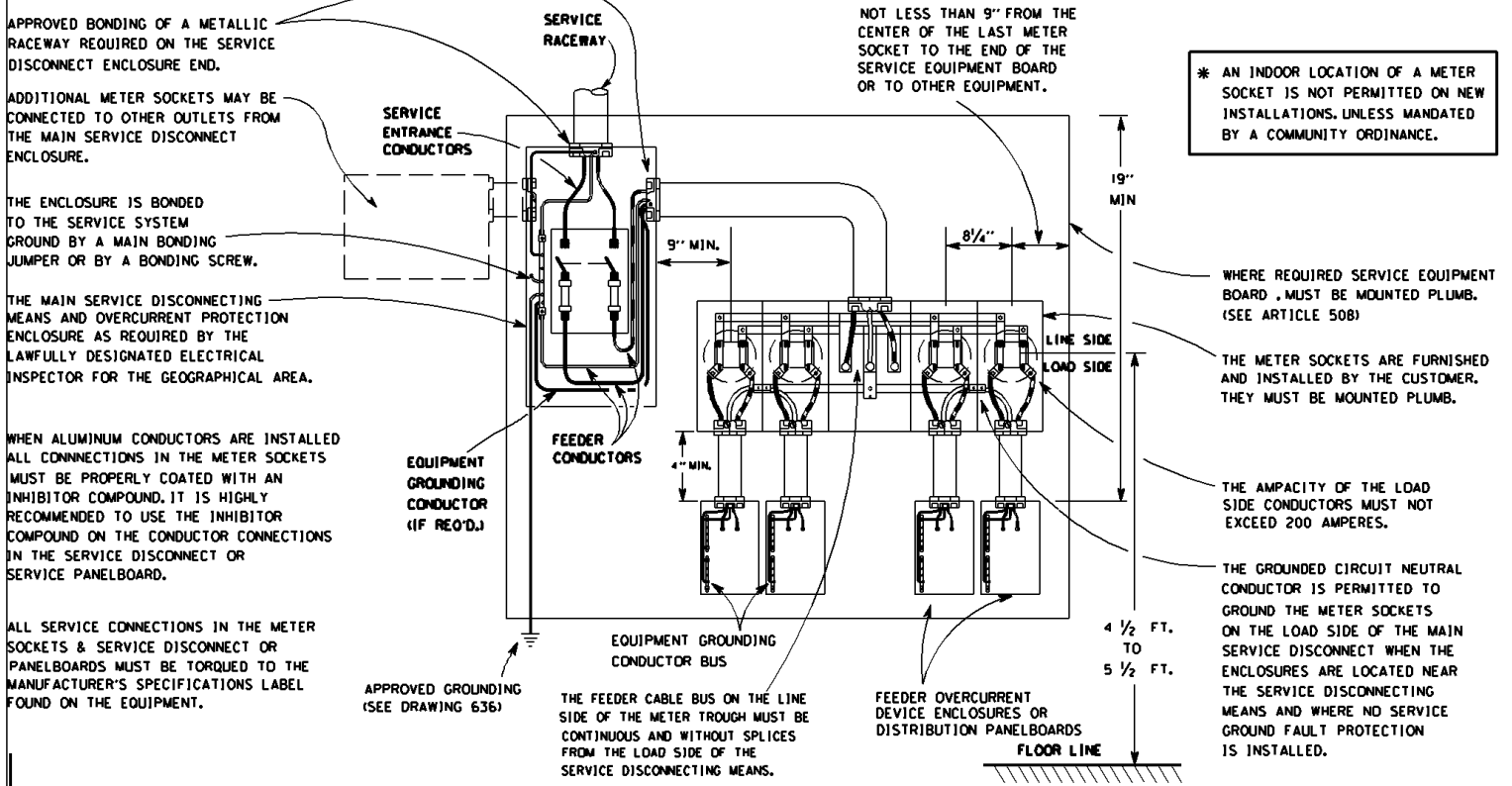


622

REVISED 2/03

120/240 VOLT, SINGLE-PHASE, THREE-WIRE * (TYPICAL MULTIPLE METERING INSTALLATION WHERE THE MAIN SERVICE DISCONNECT IS REQUIRED ON THE SUPPLY SIDE OF THE METERING EQUIPMENT) (SEE NEC)



APPROVED BONDING OF A METALLIC RACEWAY REQUIRED ON THE SERVICE DISCONNECT ENCLOSURE END.

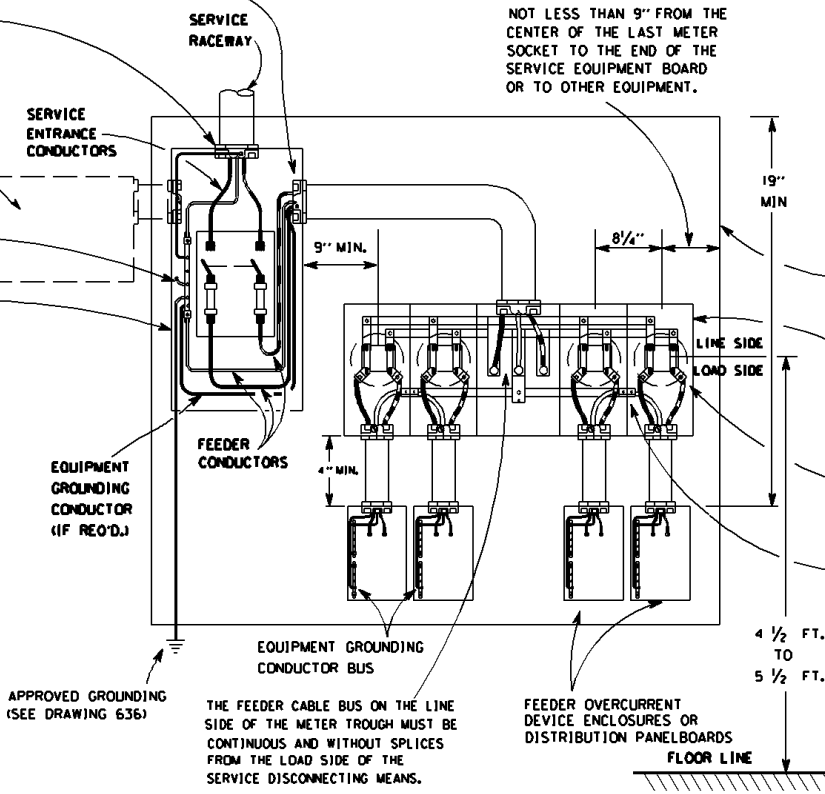
ADDITIONAL METER SOCKETS MAY BE CONNECTED TO OTHER OUTLETS FROM THE MAIN SERVICE DISCONNECT ENCLOSURE.

THE ENCLOSURE IS BONDED TO THE SERVICE SYSTEM GROUND BY A MAIN BONDING JUMPER OR BY A BONDING SCREW.

THE MAIN SERVICE DISCONNECTING MEANS AND OVERCURRENT PROTECTION ENCLOSURE AS REQUIRED BY THE LAWFULLY DESIGNATED ELECTRICAL INSPECTOR FOR THE GEOGRAPHICAL AREA.

WHEN ALUMINUM CONDUCTORS ARE INSTALLED ALL CONNECTIONS IN THE METER SOCKETS MUST BE PROPERLY COATED WITH AN INHIBITOR COMPOUND. IT IS HIGHLY RECOMMENDED TO USE THE INHIBITOR COMPOUND ON THE CONDUCTOR CONNECTIONS IN THE SERVICE DISCONNECT OR SERVICE PANELBOARD.

ALL SERVICE CONNECTIONS IN THE METER SOCKETS & SERVICE DISCONNECT OR PANELBOARDS MUST BE TORQUED TO THE MANUFACTURER'S SPECIFICATIONS LABEL FOUND ON THE EQUIPMENT.



* AN INDOOR LOCATION OF A METER SOCKET IS NOT PERMITTED ON NEW INSTALLATIONS, UNLESS MANDATED BY A COMMUNITY ORDINANCE.

WHERE REQUIRED SERVICE EQUIPMENT BOARD, MUST BE MOUNTED PLUMB. (SEE ARTICLE 508)

THE METER SOCKETS ARE FURNISHED AND INSTALLED BY THE CUSTOMER. THEY MUST BE MOUNTED PLUMB.

THE AMPACITY OF THE LOAD SIDE CONDUCTORS MUST NOT EXCEED 200 AMPERES.

THE GROUNDING CIRCUIT NEUTRAL CONDUCTOR IS PERMITTED TO GROUND THE METER SOCKETS ON THE LOAD SIDE OF THE MAIN SERVICE DISCONNECT WHEN THE ENCLOSURES ARE LOCATED NEAR THE SERVICE DISCONNECTING MEANS AND WHERE NO SERVICE GROUND FAULT PROTECTION IS INSTALLED.