

621

REVISED 2/03

### 120/240 VOLT, SINGLE PHASE, THREE-WIRE \* ( TYPICAL MULTIPLE METERING INSTALLATION )

\* AN INDOOR LOCATION OF A METER SOCKET IS NOT PERMITTED ON NEW INSTALLATIONS, UNLESS MANDATED BY A COMMUNITY ORDINANCE.

THE SERVICE ENTRANCE CABLE ON THE LINE SIDE OF THE METER TROUGH MUST BE CONTINUOUS & WITHOUT SPLICES FROM THE WEATHERHEAD OR POINT OF CONNECTION TO THE SERVICE BUS.

APPROVED BONDING OF A METALLIC RACEWAY TO THE METER SOCKETS IS REQUIRED.

THE AMPACITY OF THE LOAD SIDE CONDUCTORS CANNOT EXCEED 200 AMPERES.

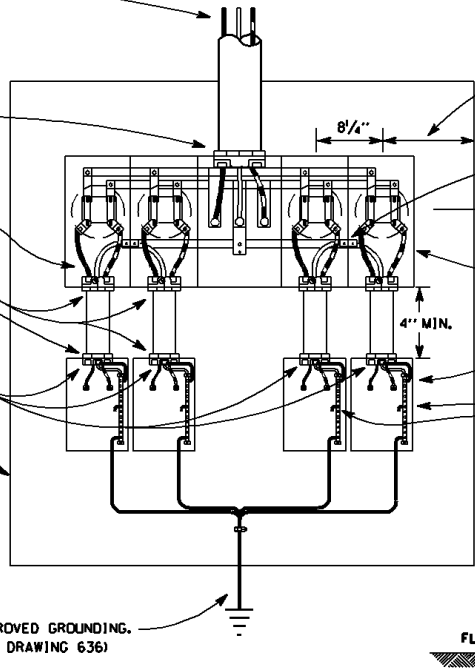
LOCKNUTS AND APPROVED FITTINGS REQUIRED WHEN INSTALLING METALLIC OR NON-METALLIC RACEWAYS OR CABLE ASSEMBLIES.

APPROVED BONDING OF A METALLIC NIPPLE OR RACEWAY REQUIRED ON THE SERVICE DISCONNECT ENCLOSURE END.

WHERE REQUIRED A SERVICE EQUIPMENT BOARD, MUST BE MOUNTED PLUMB. (SEE ARTICLE 508)

ALL SERVICE CONDUCTOR CONNECTIONS IN THE METER SOCKET & SERVICE DISCONNECTS OR SERVICE PANELBOARDS MUST BE TORQUED TO THE MANUFACTURER'S SPECIFICATIONS LABEL FOUND ON THE EQUIPMENT.

APPROVED GROUNDING.  
(SEE DRAWING 636)



NOT LESS THAN 9" FROM THE CENTER OF THE LAST METER TO THE END OF THE SERVICE EQUIPMENT BOARD OR TO OTHER EQUIPMENT.

THE GROUNDED SERVICE NEUTRAL CONDUCTOR CONNECTOR MUST BOND THE METER SOCKETS TO THE SERVICE GROUNDING SYSTEM.

THE METER SOCKETS ARE FURNISHED & INSTALLED BY THE CUSTOMER AND MUST BE MOUNTED PLUMB.

THE ENCLOSURES ARE BONDED TO THE SERVICE SYSTEM GROUND BY A MAIN BONDING JUMPER OR A BONDING SCREW.

4 1/2 FT.  
TO  
5 1/2 FT.

WHEN ALUMINUM CONDUCTORS ARE INSTALLED ALL CONNECTIONS IN THE METER SOCKET MUST BE PROPERLY COATED WITH AN INHIBITOR COMPOUND. IT IS HIGHLY RECOMMENDED TO USE THE INHIBITOR COMPOUND ON THE CONDUCTOR CONNECTIONS IN THE SERVICE DISCONNECT OR SERVICE PANELBOARD.