

CHEOPS Model



Nantahala Scenario Output



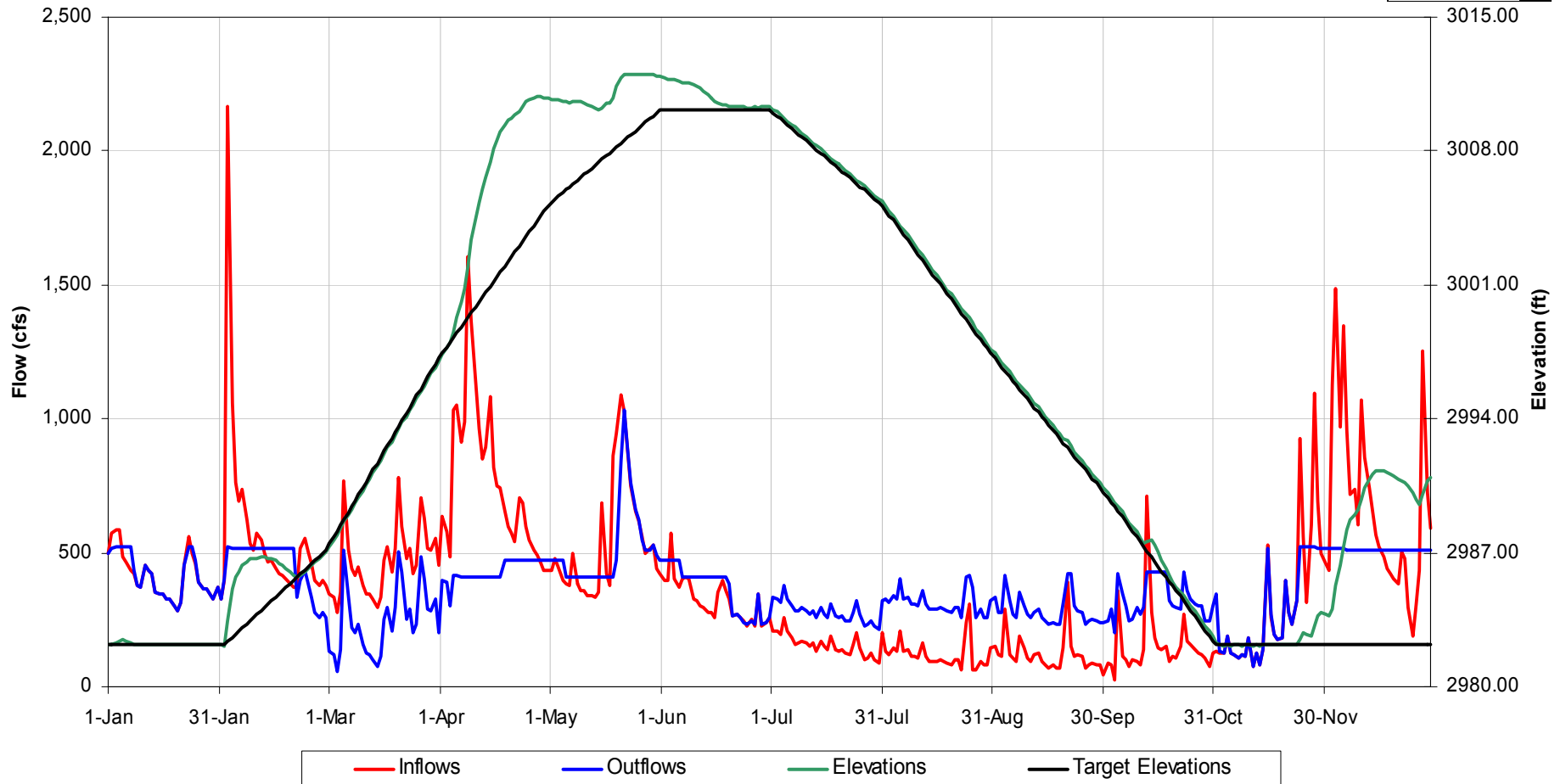
Nantahala - Base Case

(Normal 1983)



Nantahala Reservoir Operational Details
for 1983 Hydrology, Scenario 'Base Case'

Change Year



Nantahala

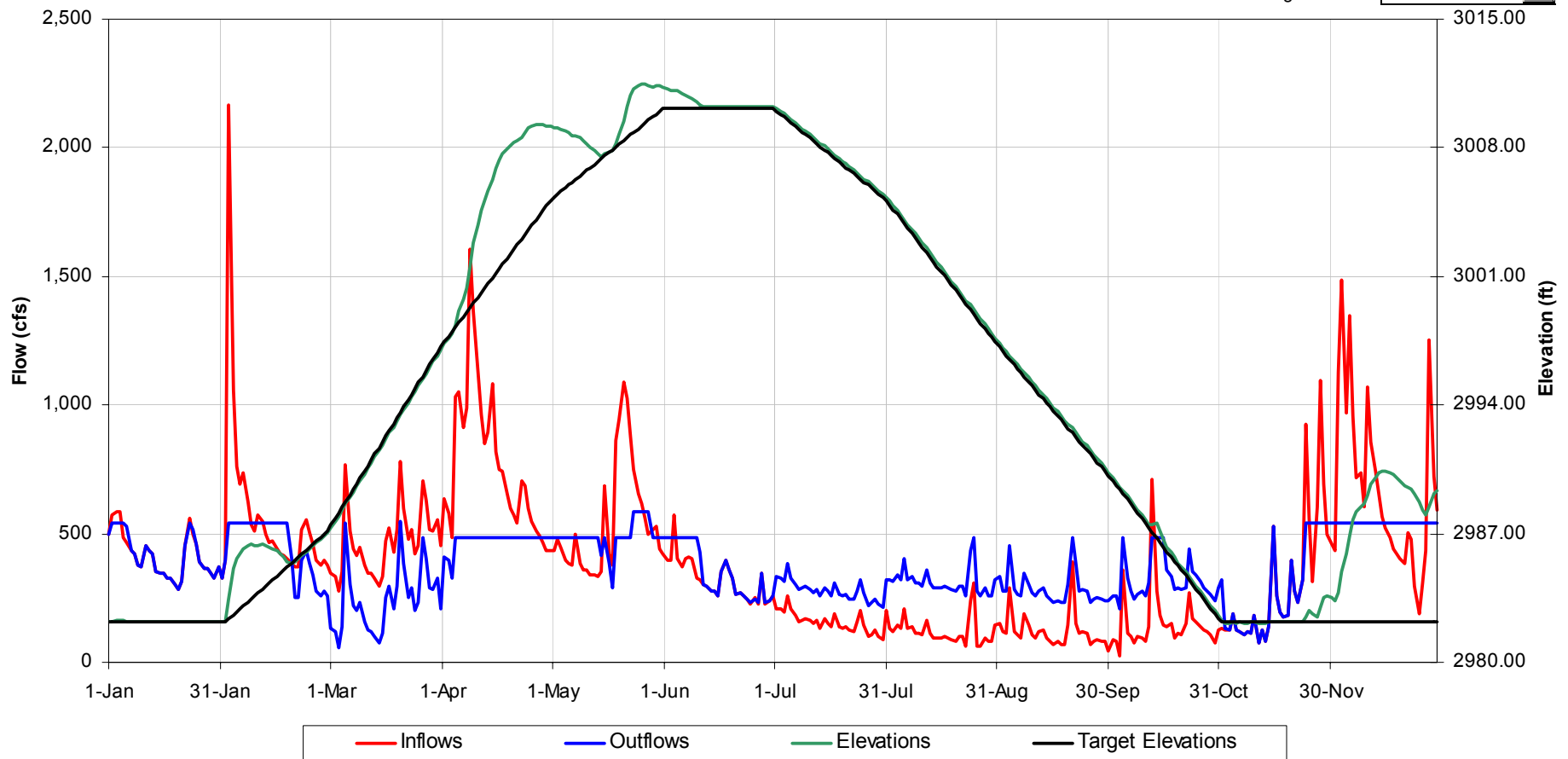
Base Case New Runner

(Normal 1983)



Nantahala Reservoir Operational Details
for 1983 Hydrology, Scenario 'Base Case New Runner'

Change Year



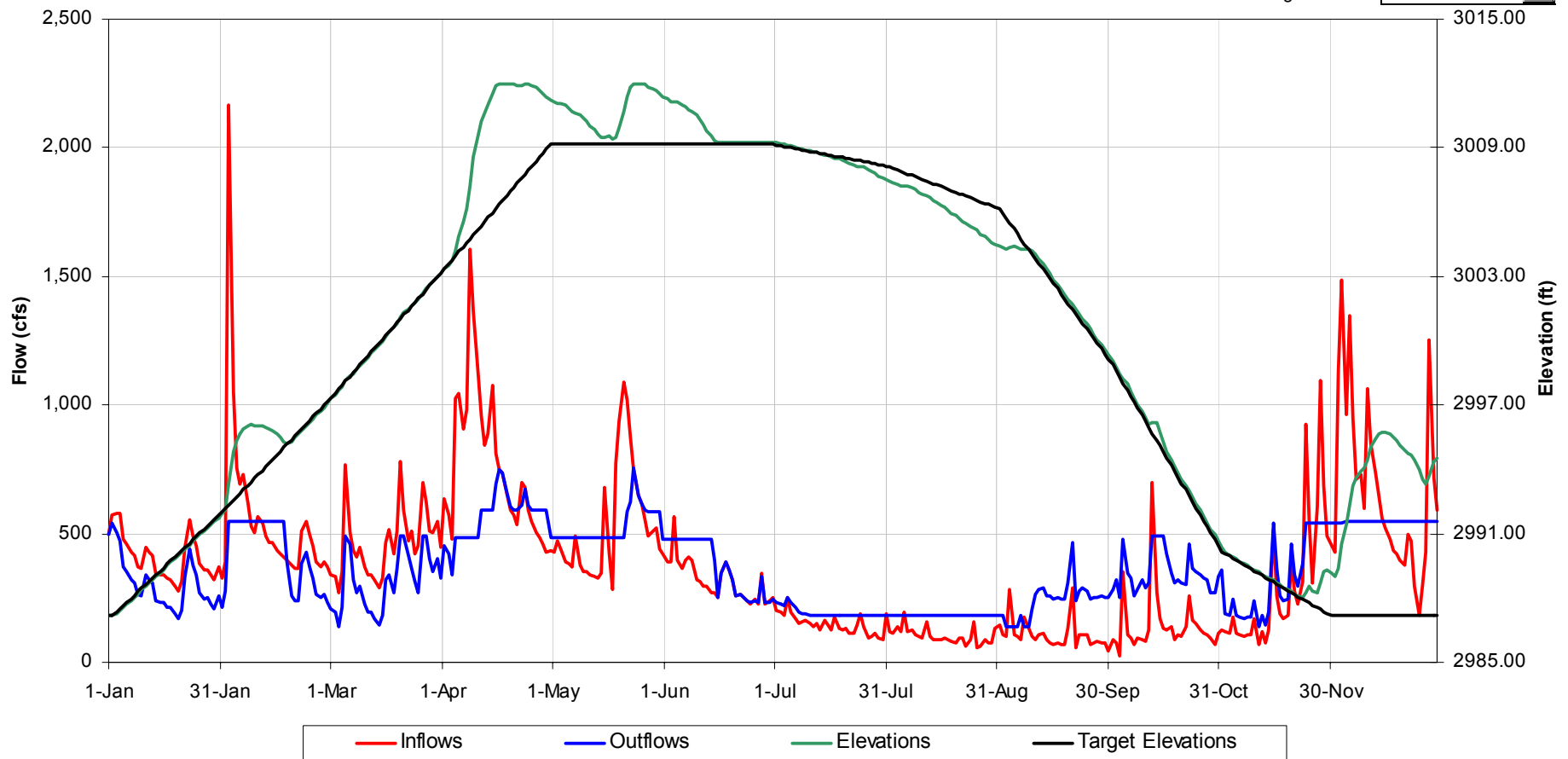
Nantahala - Scenario 2

(Normal 1983)



Nantahala Reservoir Operational Details
for 1983 Hydrology, Scenario 'Scn 2 Duke Tb'

Change Year



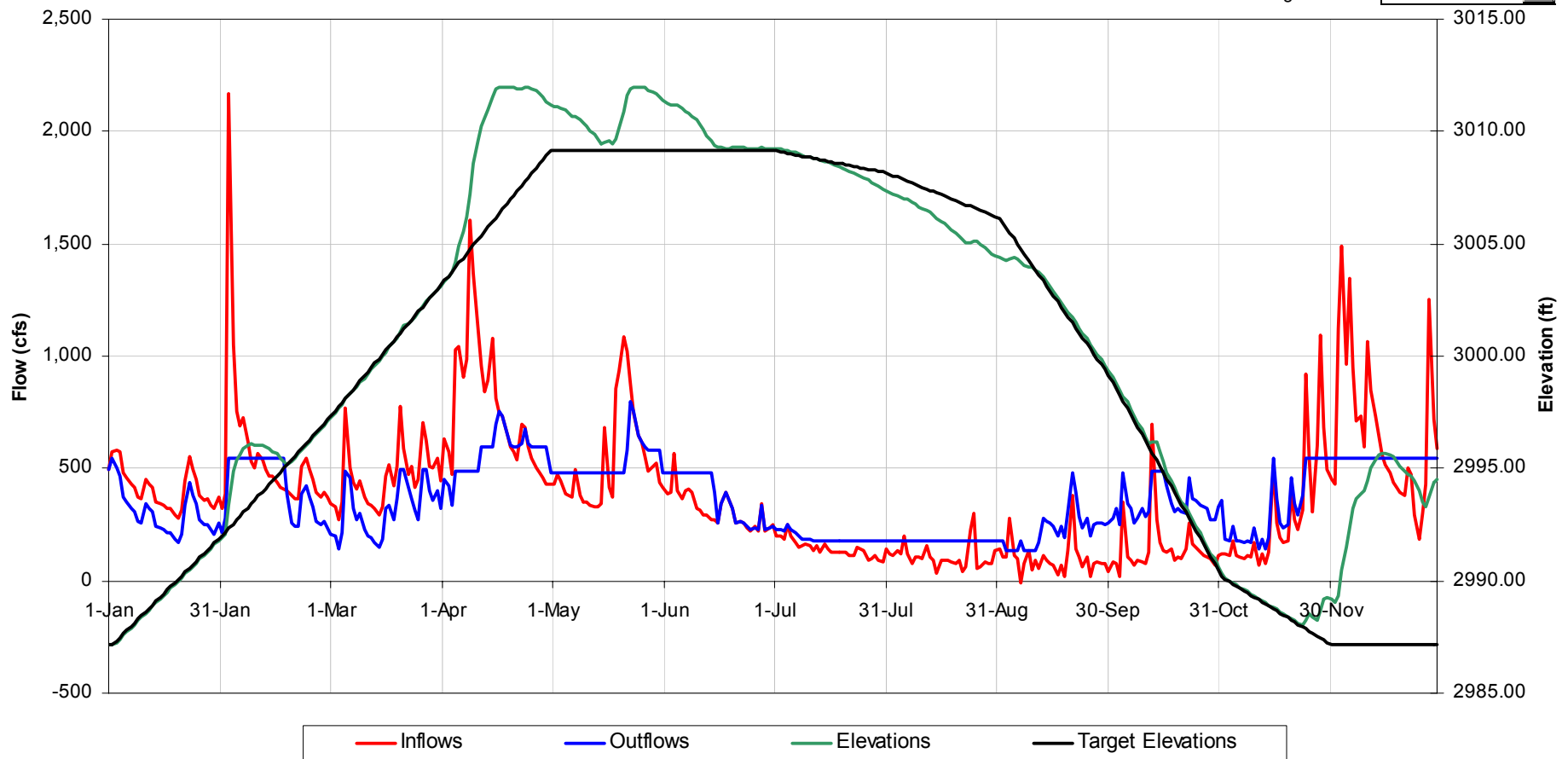
Nantahala - Scenario 3

(Normal 1983)



Nantahala Reservoir Operational Details
for 1983 Hydrology, Scenario 'Scn 3 Mod Duke Tb'

Change Year



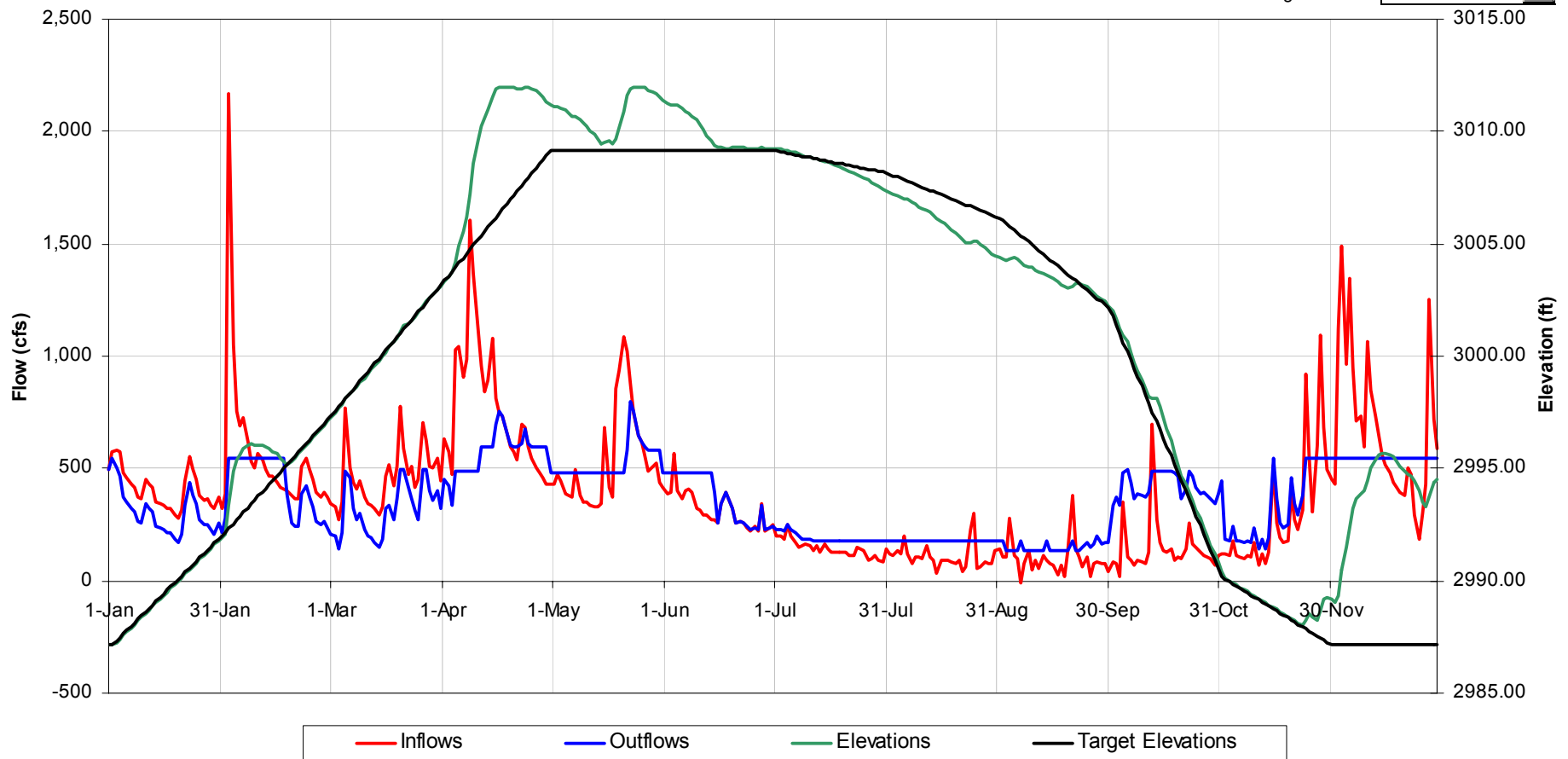
Nantahala - Scenario 4

(Normal 1983)



Nantahala Reservoir Operational Details
for 1983 Hydrology, Scenario 'Scn 4 Nant Hoa Rc & Mod Tb'

Change Year



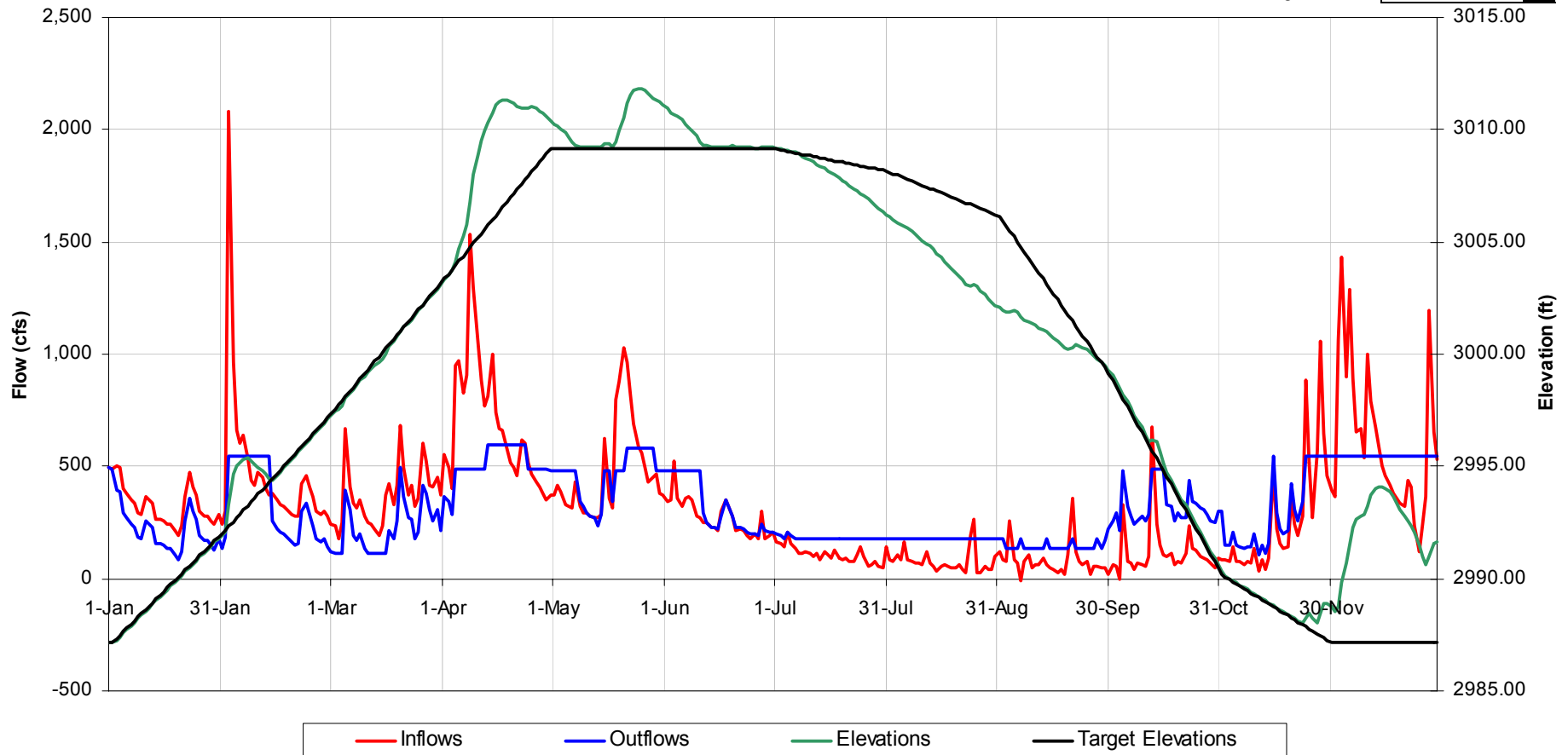
Nantahala - Scenario 5

(Normal 1983)



Nantahala Reservoir Operational Details
for 1983 Hydrology, Scenario 'Scn 5 Usfws Bpf & Mod Tb'

Change Year

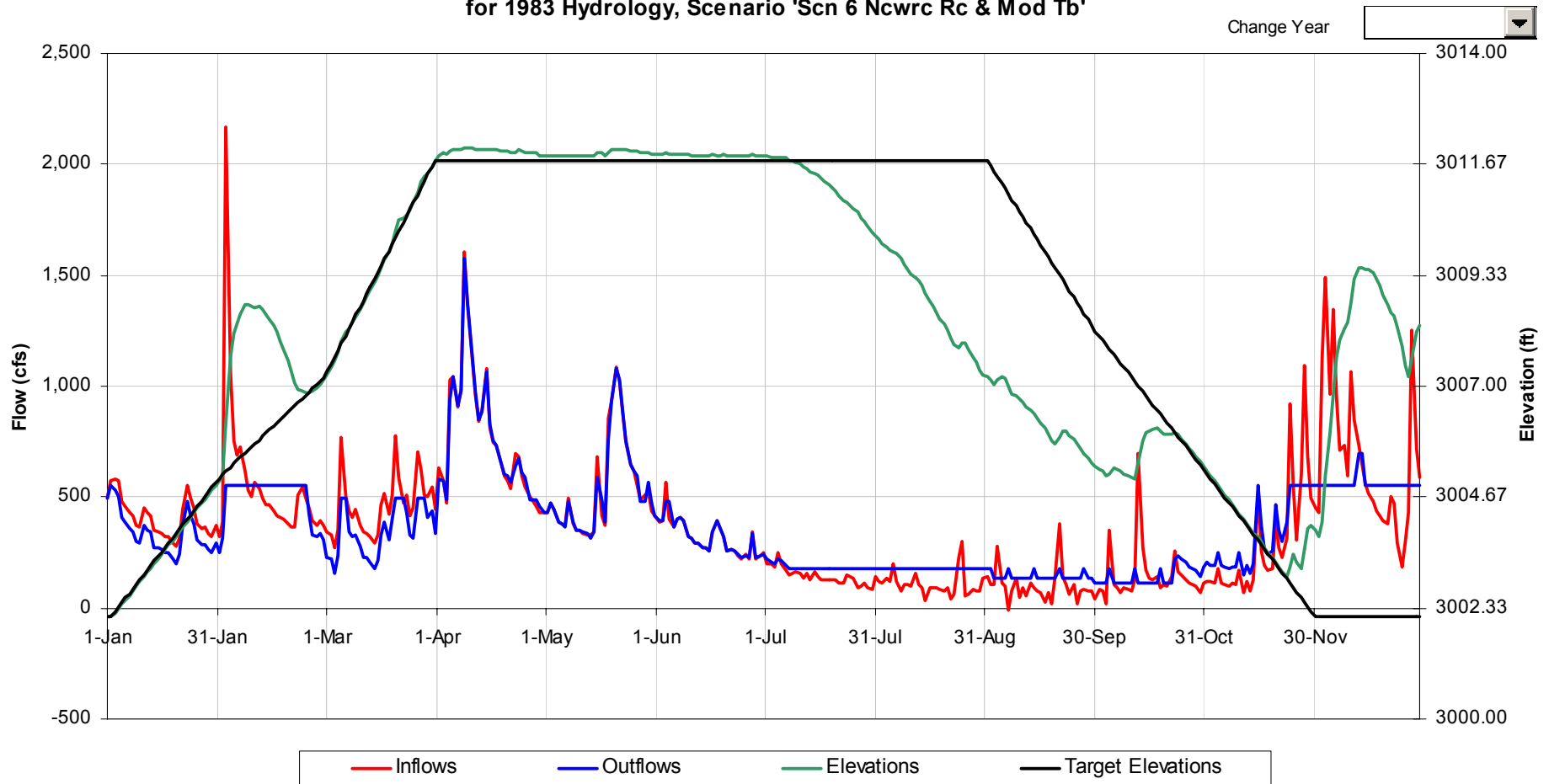


Nantahala - Scenario 6

(Normal 1983)



Nantahala Reservoir Operational Details
for 1983 Hydrology, Scenario 'Scn 6 NcwrC Rc & Mod Tb'



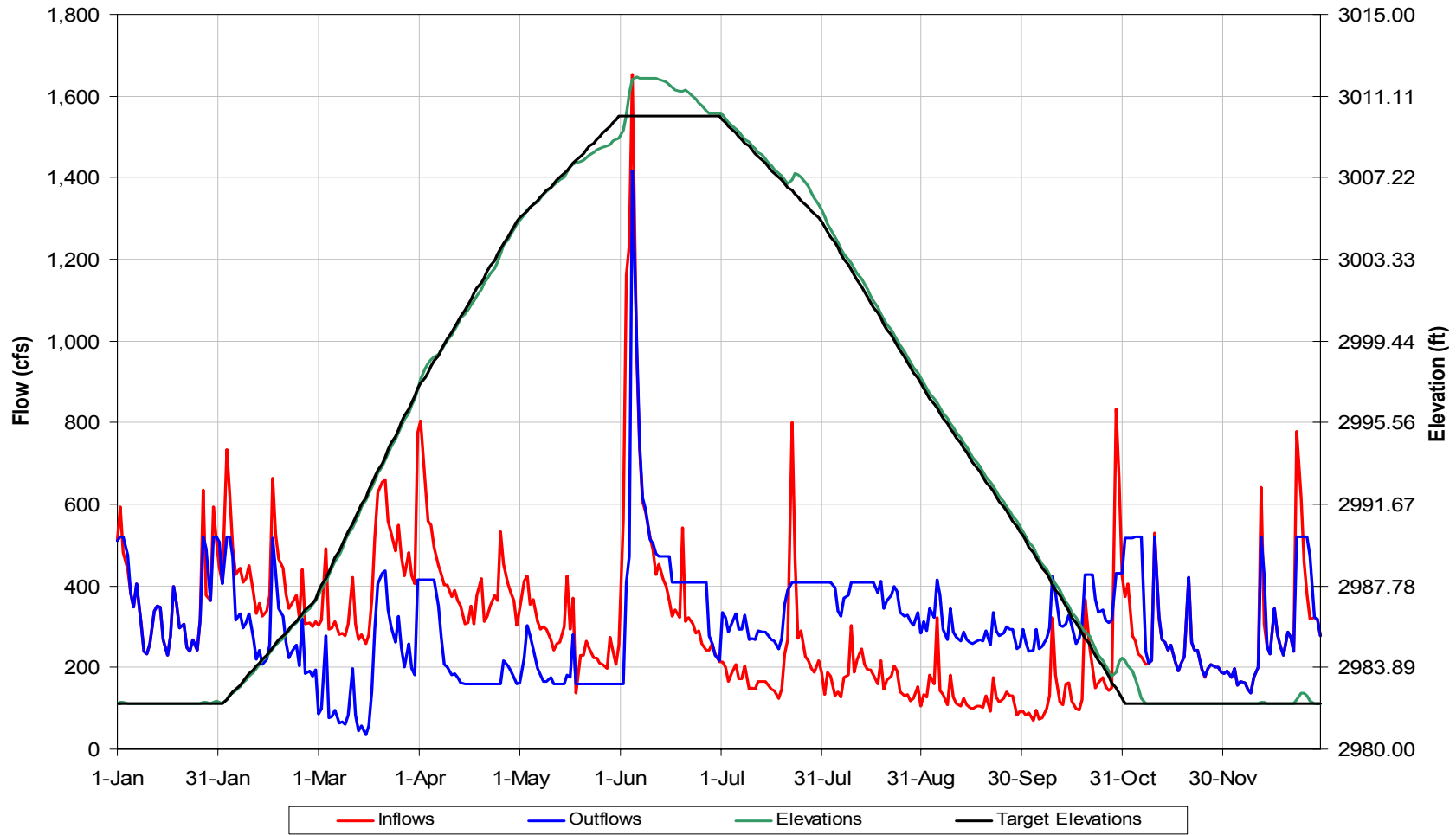
Nantahala - Base Case

(Dry 1970)



Nantahala Reservoir Operational Details
for 1970 Hydrology, Scenario 'Base Case'

Change Year



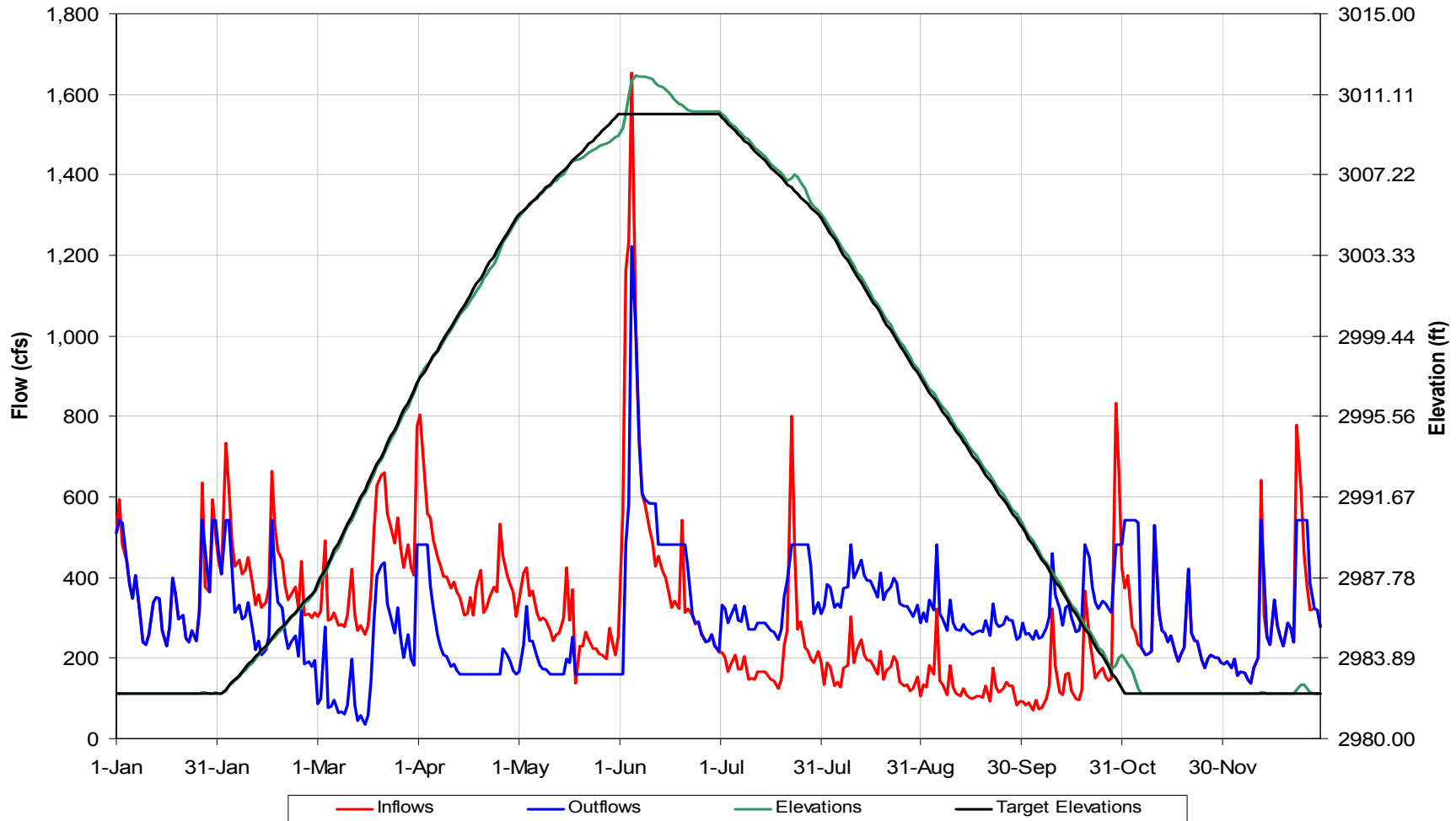
Nantahala Base Case New Runner



(Dry 1970)

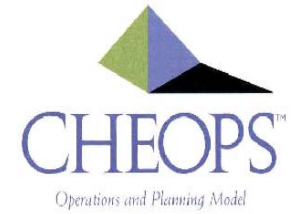
Nantahala Reservoir Operational Details
for 1970 Hydrology, Scenario 'Base Case New Runner'

Change Year

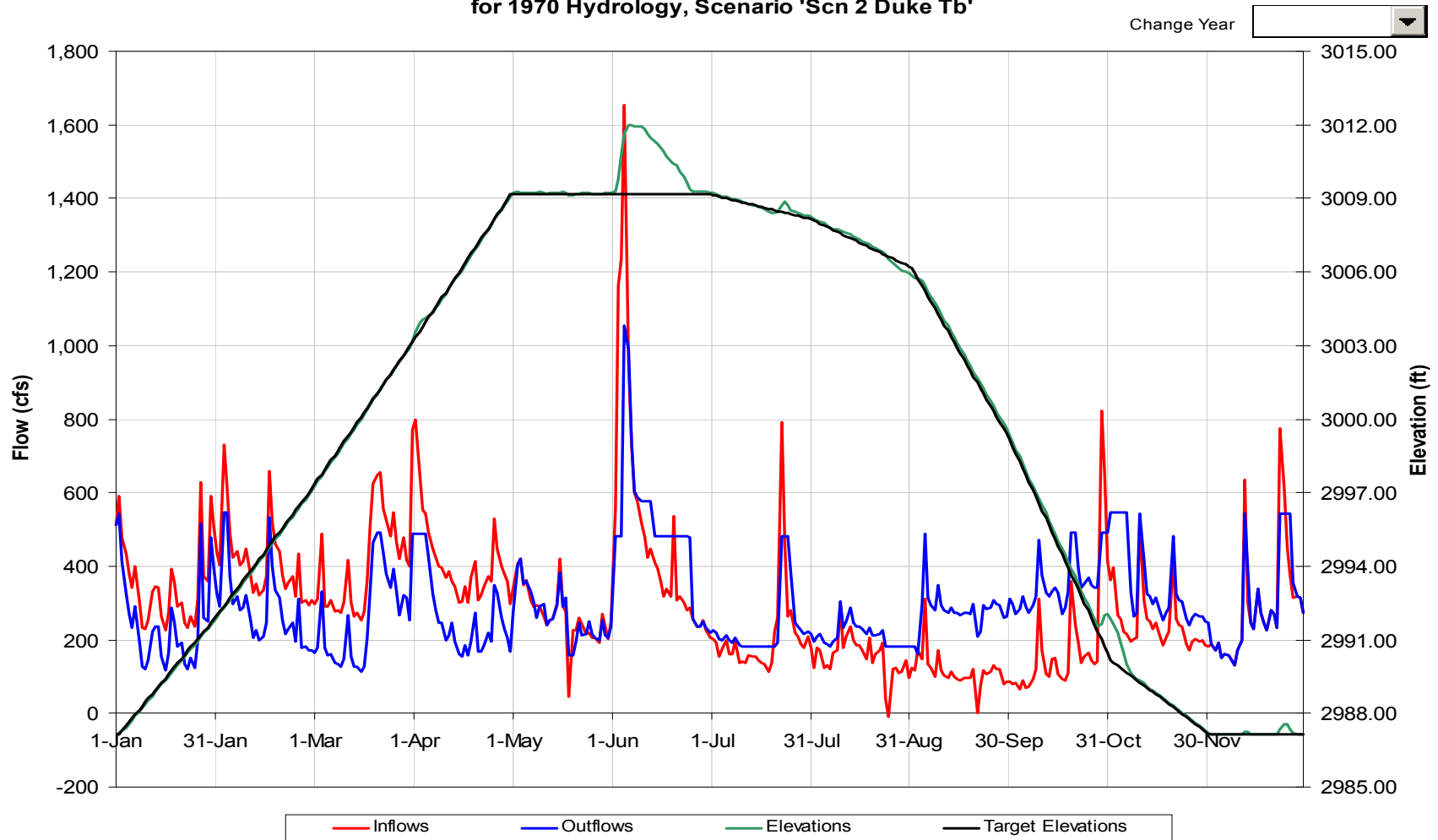


Nantahala - Scenario 2

(Dry 1970)

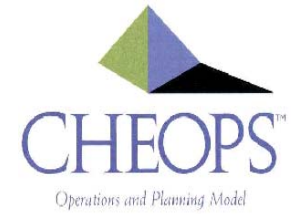


Nantahala Reservoir Operational Details
for 1970 Hydrology, Scenario 'Scn 2 Duke Tb'



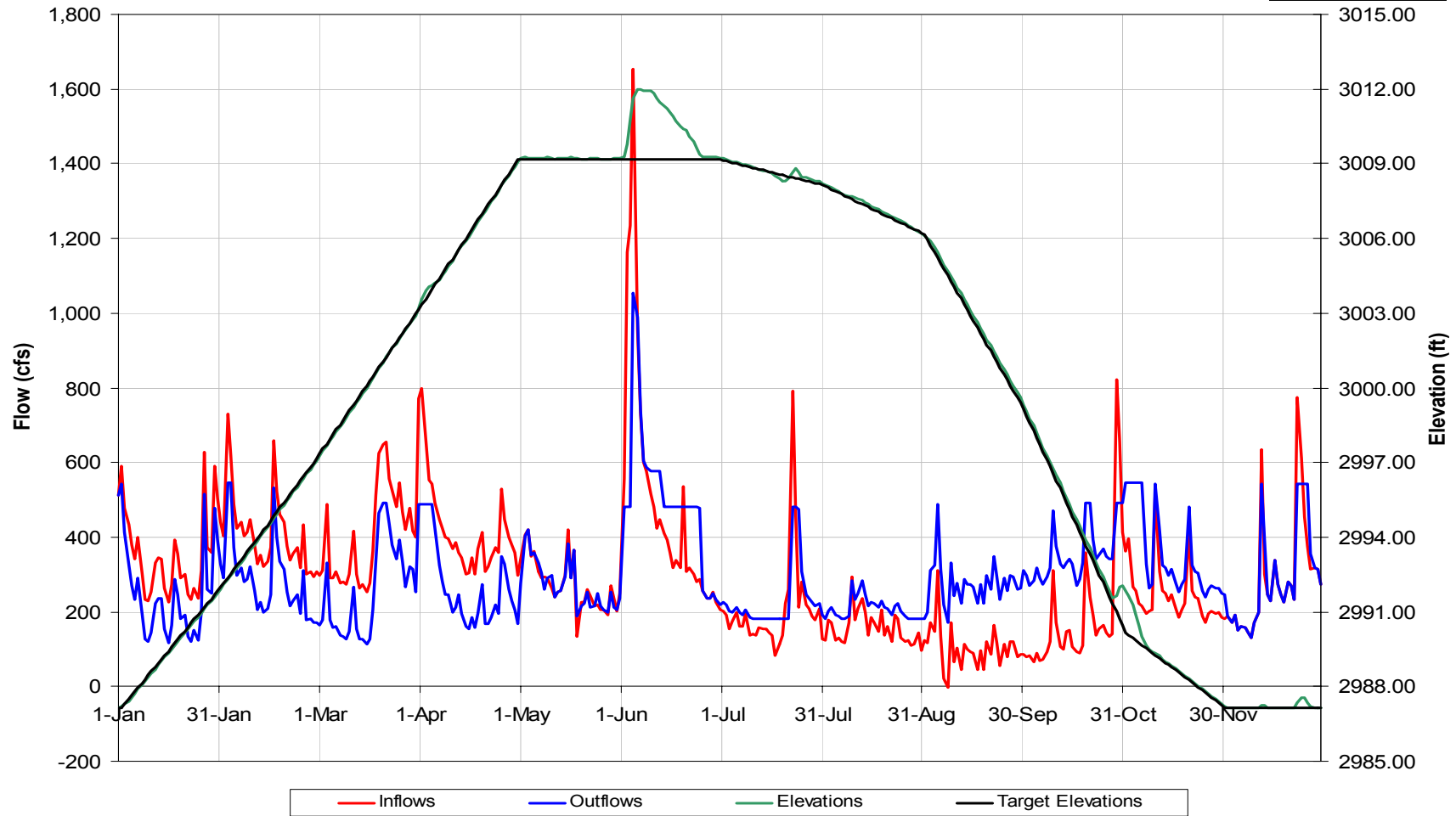
Nantahala - Scenario 3

(Dry 1970)



Nantahala Reservoir Operational Details
for 1970 Hydrology, Scenario 'Scn 3 Mod Duke Tb'

Change Year



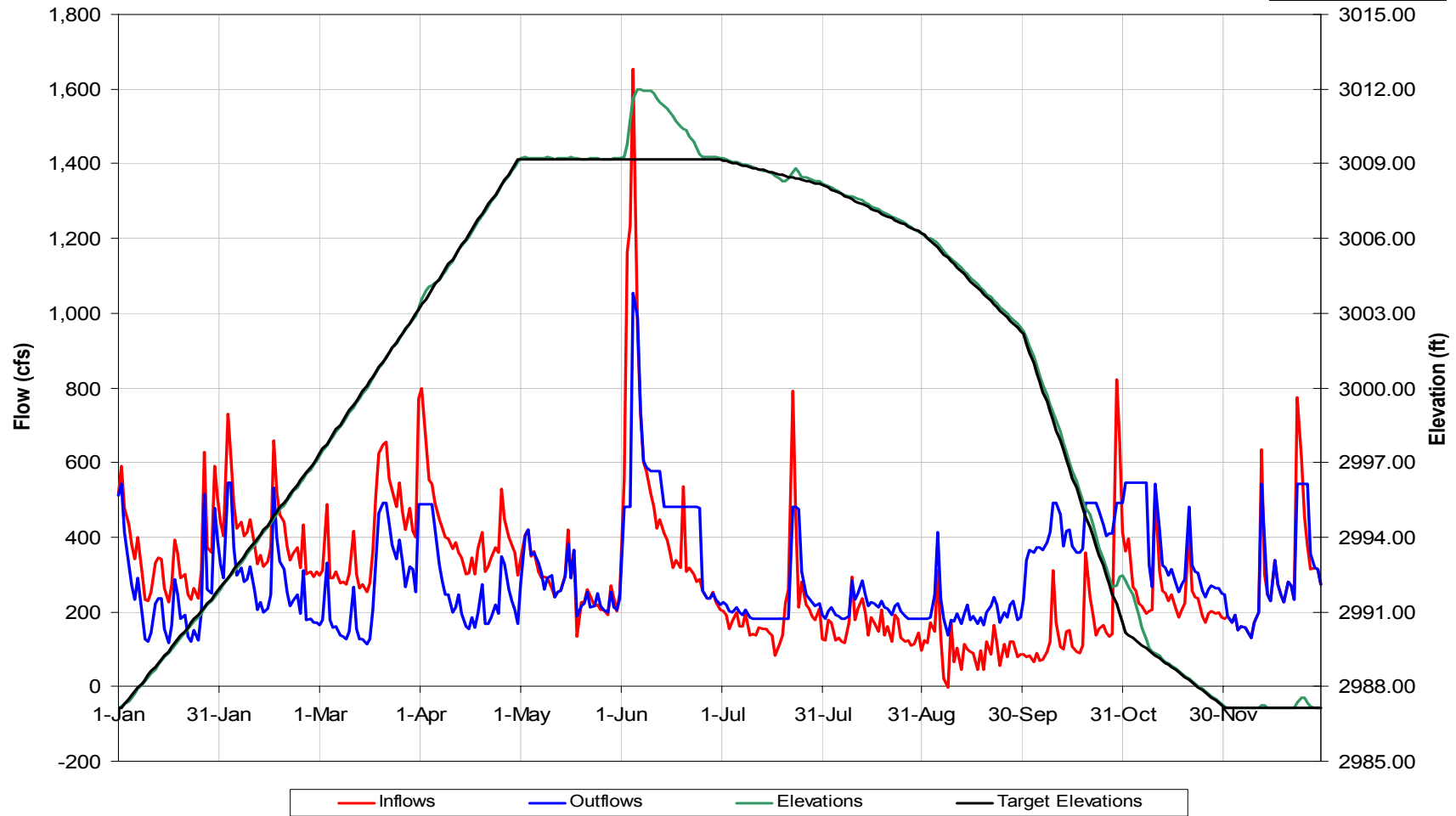
Nantahala - Scenario 4

(Dry 1970)



Nantahala Reservoir Operational Details
for 1970 Hydrology, Scenario 'Scn 4 Nant Hoa Rc & Mod Tb'

Change Year



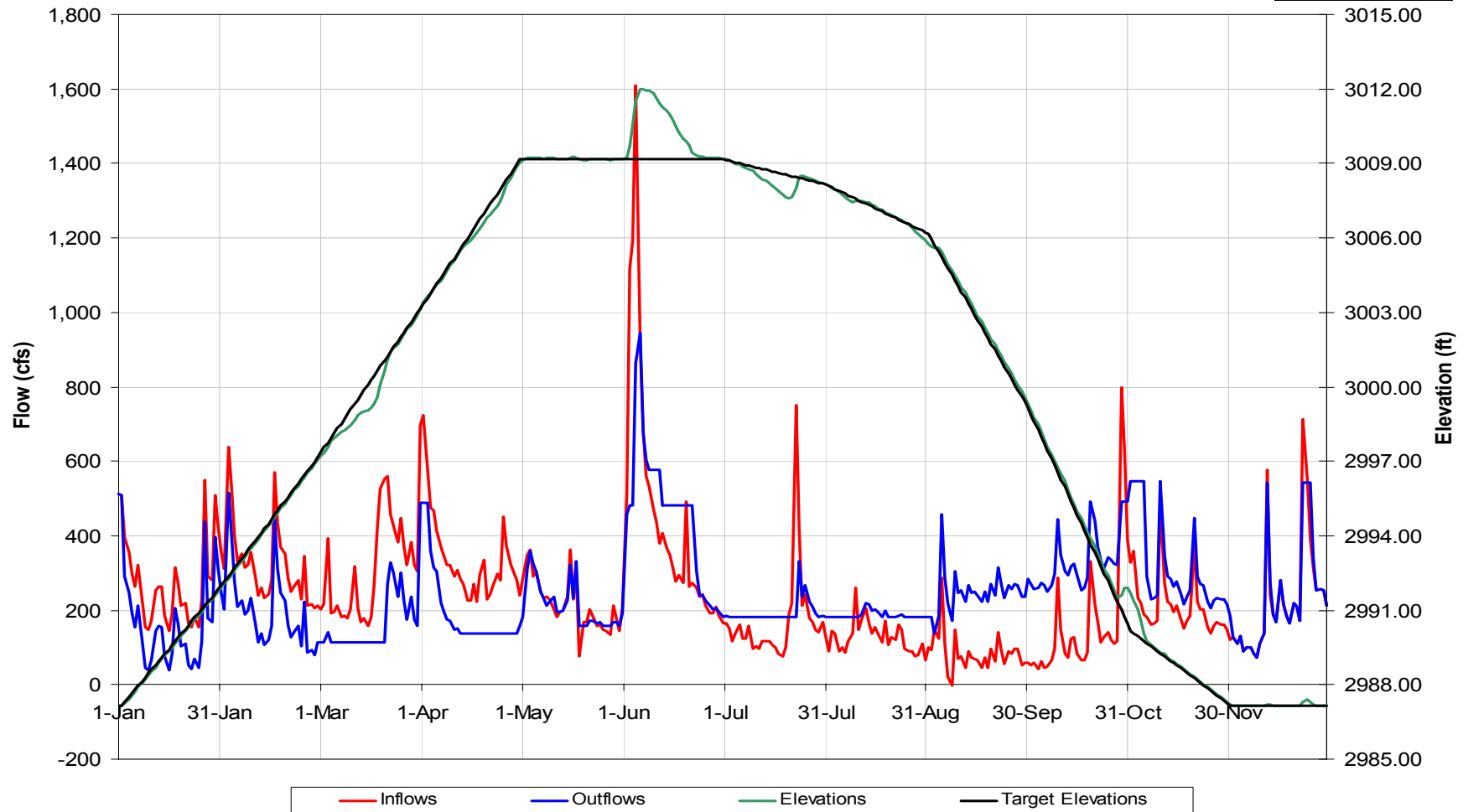
Nantahala - Scenario 5

(Dry 1970)



Nantahala Reservoir Operational Details
for 1970 Hydrology, Scenario 'Scn 5 Usfws Bpf & Mod Tb'

Change Year

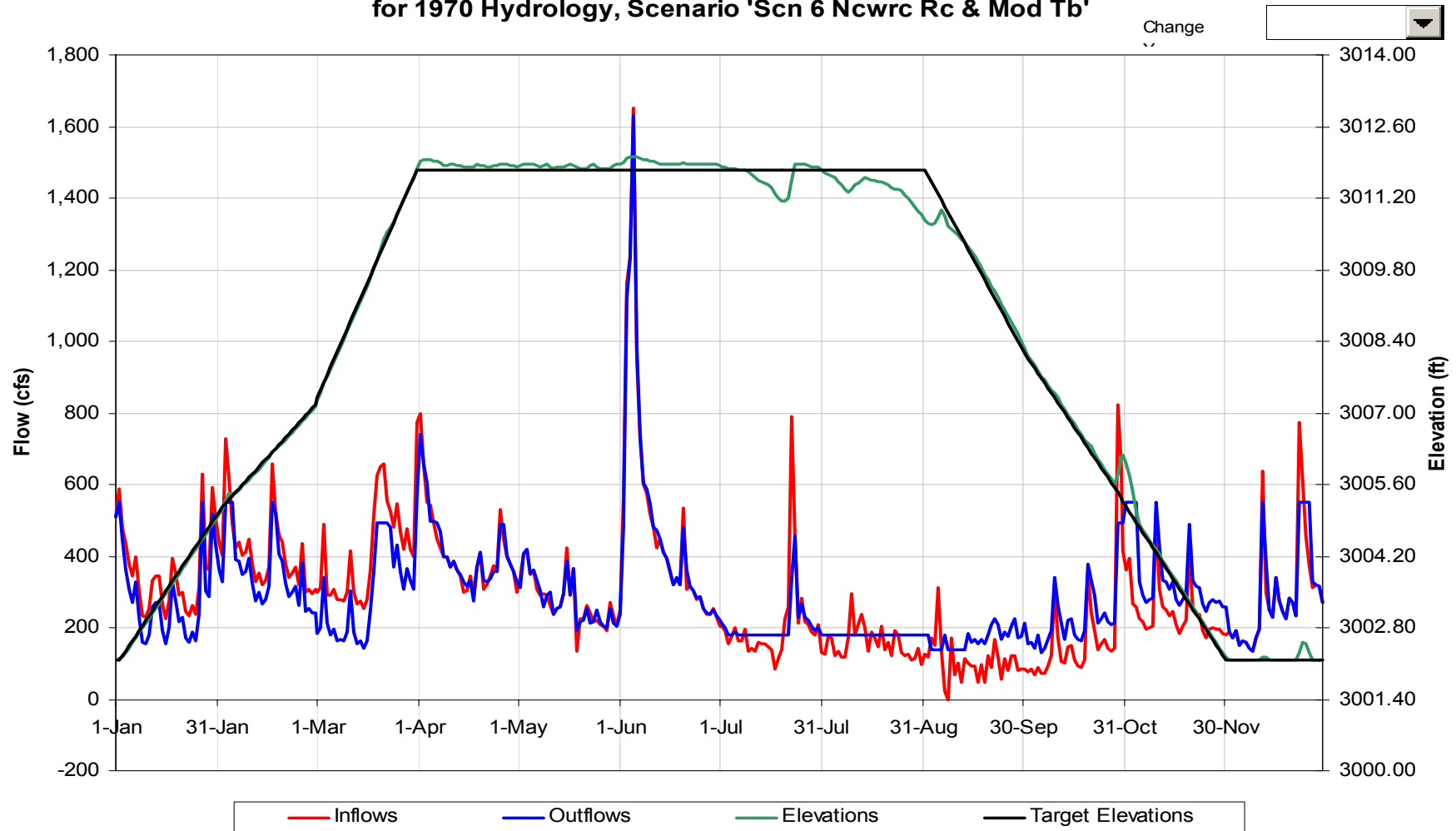


Nantahala - Scenario 6

(Dry 1970)



Nantahala Reservoir Operational Details
for 1970 Hydrology, Scenario 'Scn 6 NcwrC Rc & Mod Tb'



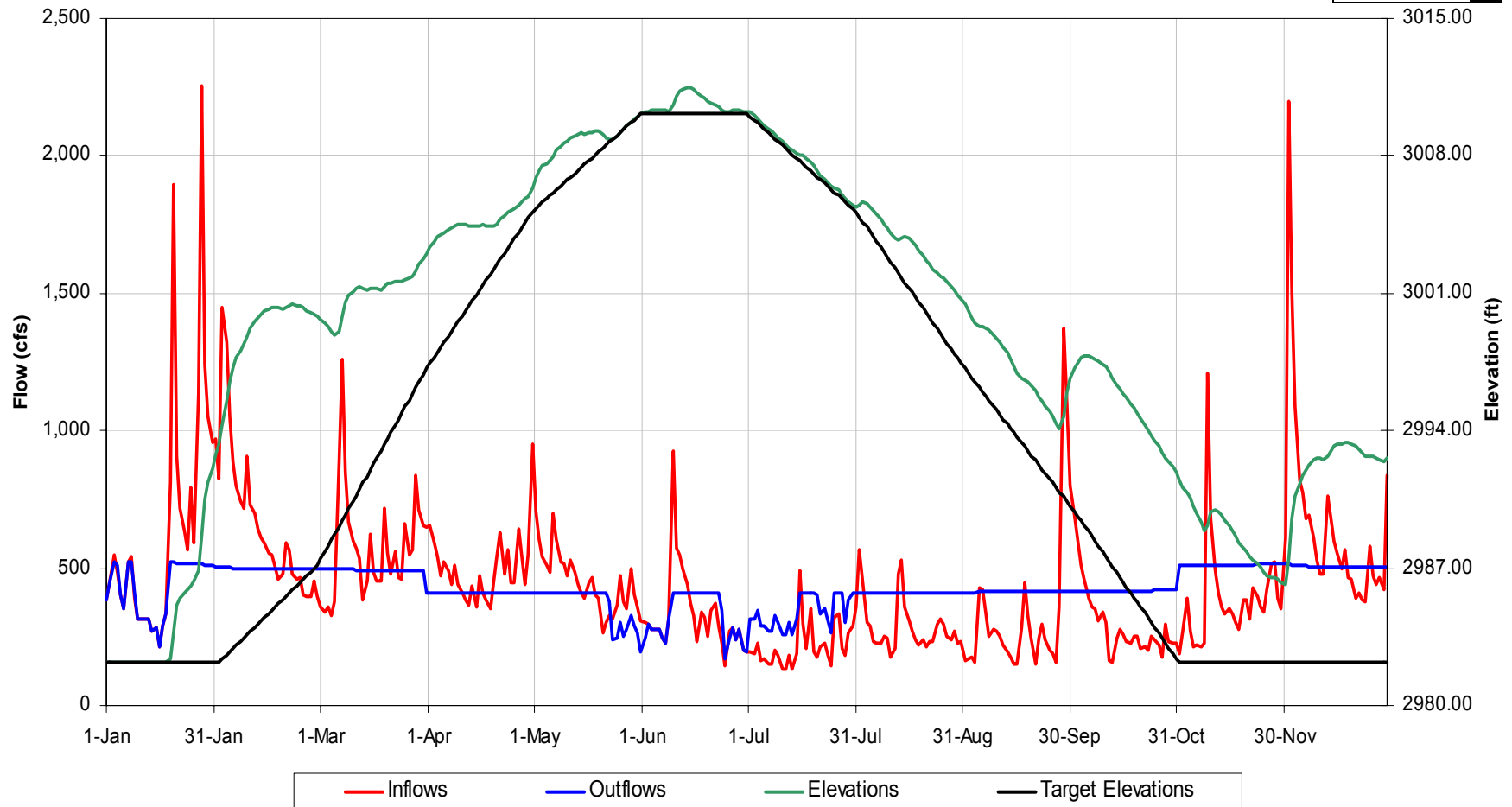
Nantahala - Base Case

(Wet 1996)



Nantahala Reservoir Operational Details
for 1996 Hydrology, Scenario 'Base Case'

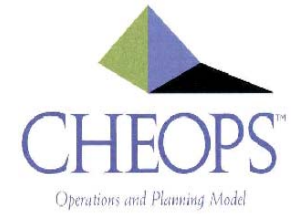
Change Year



Nantahala

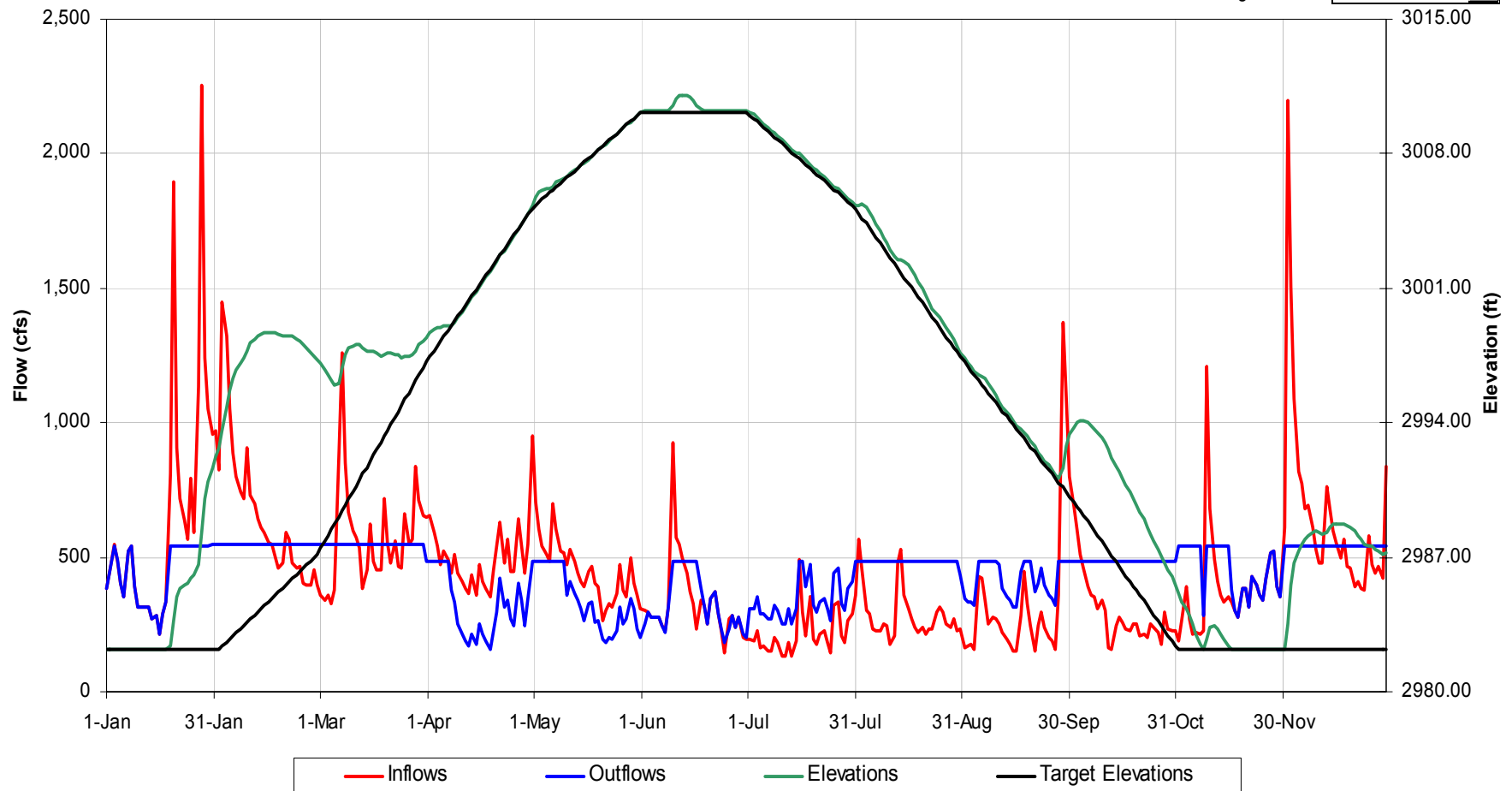
Base Case New Runner

(Wet 1996)



Nantahala Reservoir Operational Details
for 1996 Hydrology, Scenario 'Base Case New Runner'

Change Year

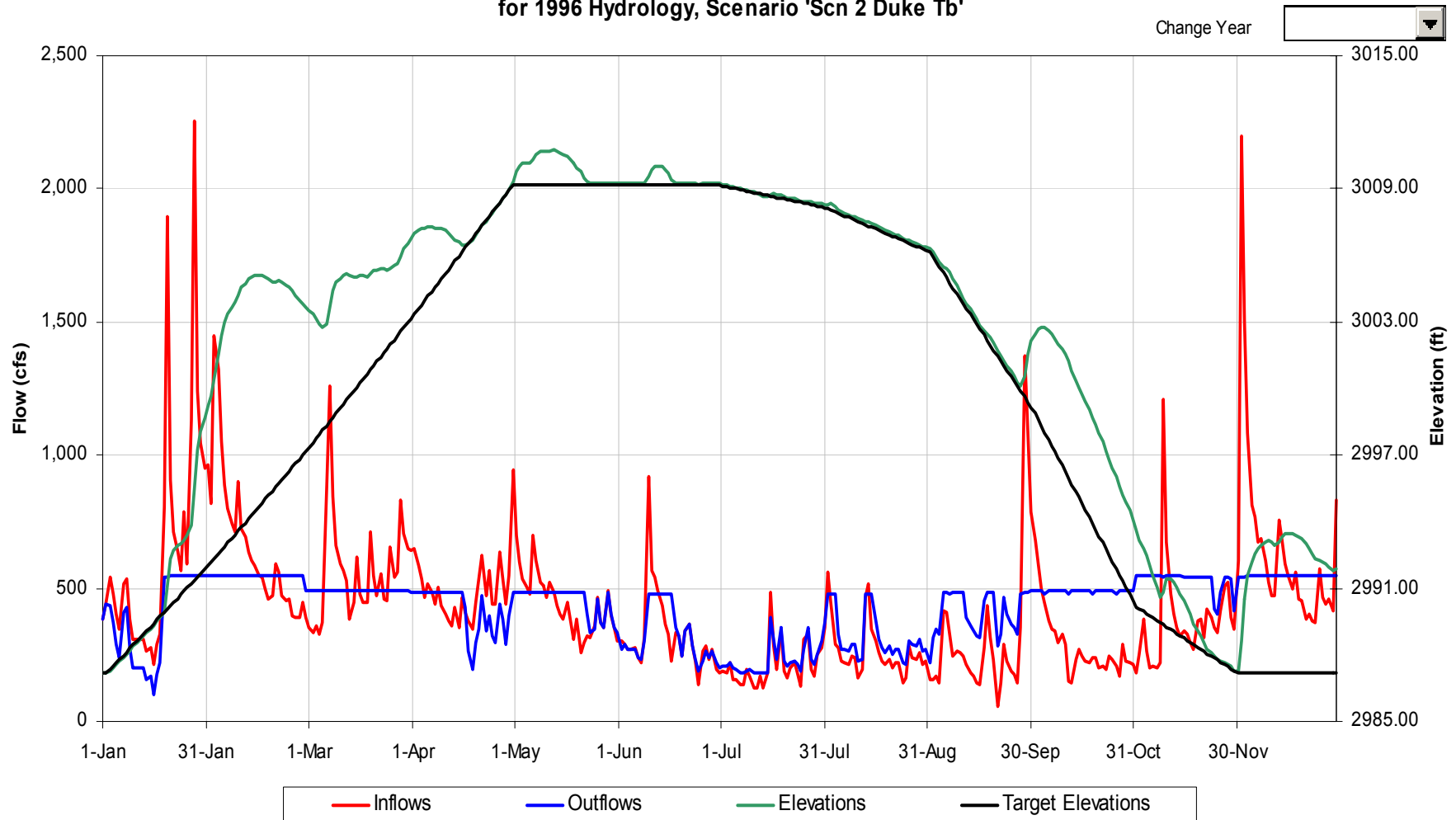


Nantahala - Scenario 2

(Wet 1996)



Nantahala Reservoir Operational Details
for 1996 Hydrology, Scenario 'Scn 2 Duke Tb'



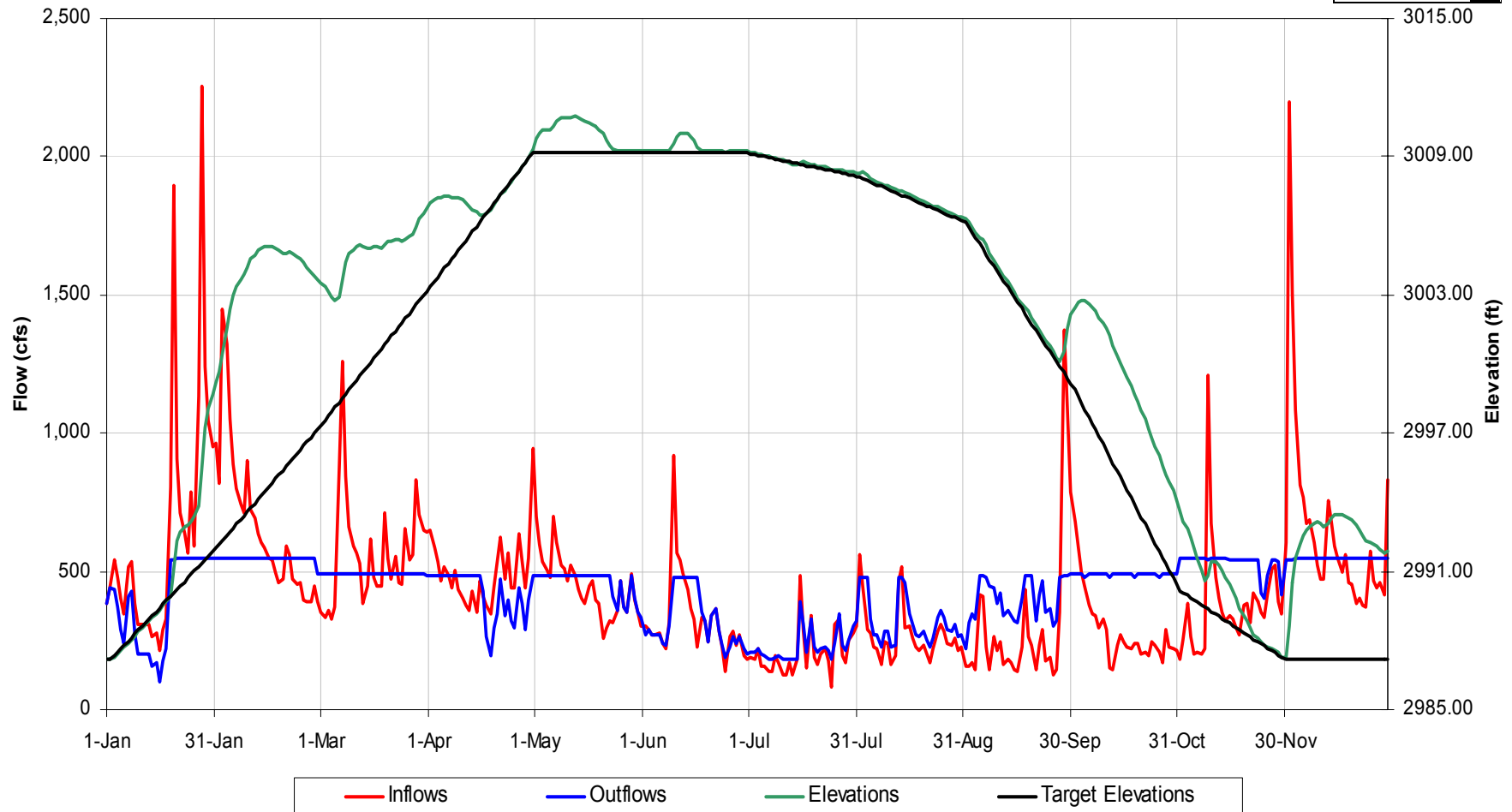
Nantahala - Scenario 3

(Wet 1996)



Nantahala Reservoir Operational Details
for 1996 Hydrology, Scenario 'Scn 3 Mod Duke Tb'

Change Year



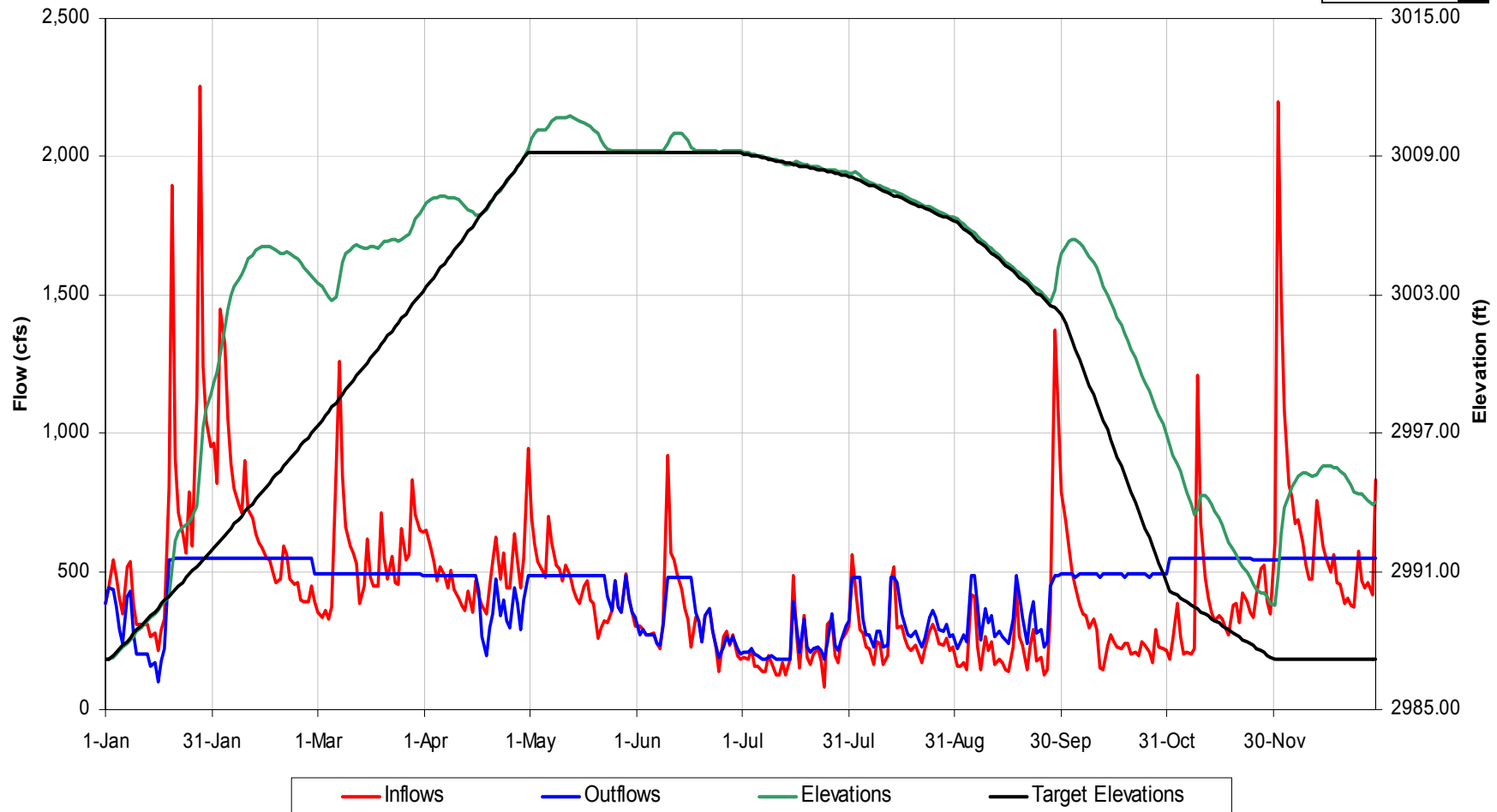
Nantahala - Scenario 4

(Wet 1996)



Nantahala Reservoir Operational Details
for 1996 Hydrology, Scenario 'Scn 4 Nant Hoa Rc & Mod Tb'

Change Year



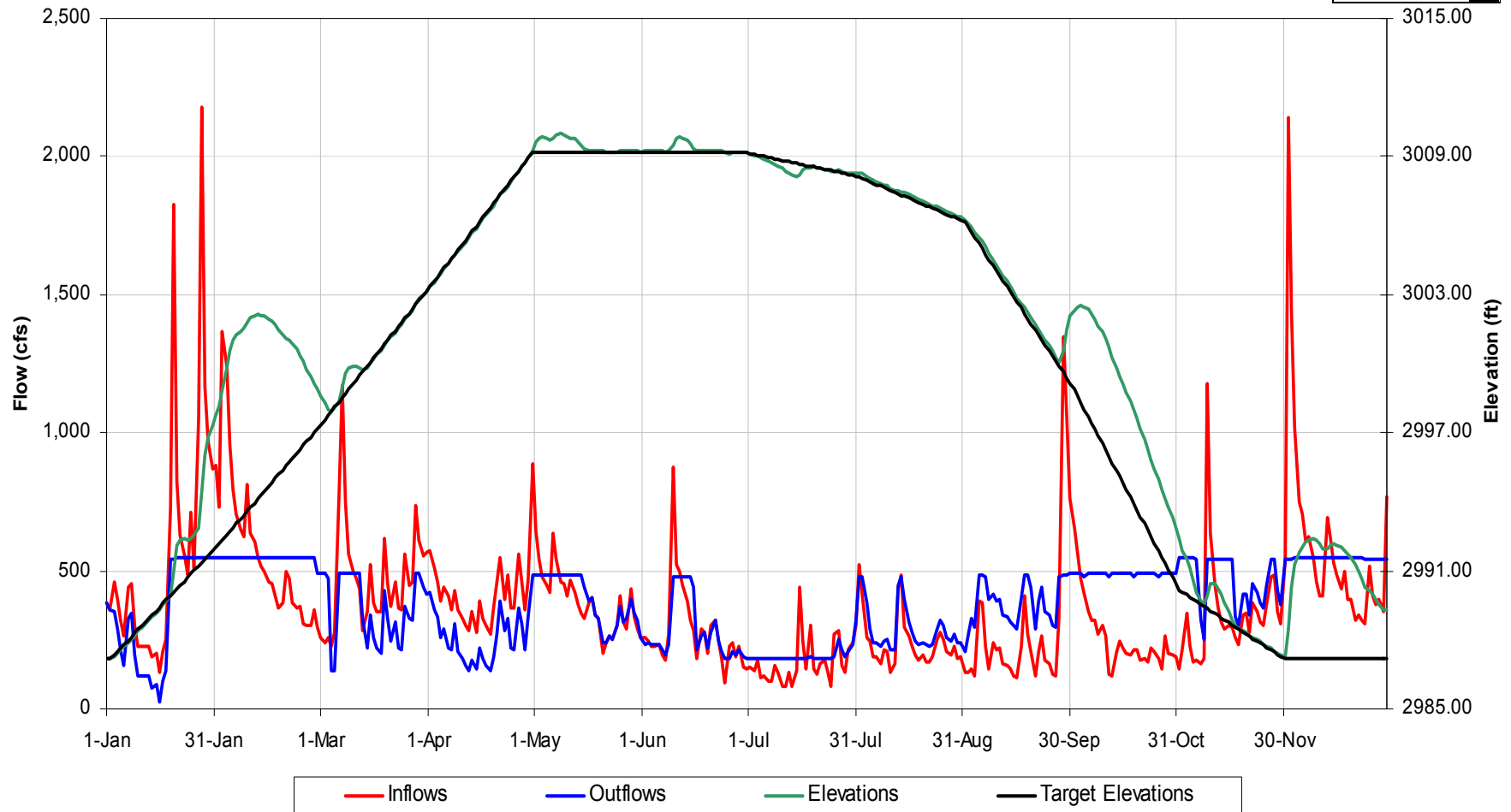
Nantahala - Scenario 5

(Wet 1996)



Nantahala Reservoir Operational Details
for 1996 Hydrology, Scenario 'Scn 5 Usfws Bpf & Mod Tb'

Change Year



Nantahala - Scenario 6

(Wet 1996)



Nantahala Reservoir Operational Details
for 1996 Hydrology, Scenario 'Scn 6 Ncwr Rc & Mod Tb'

Change Year

