

CHEOPS Model



Cedar Cliff Scenario Output



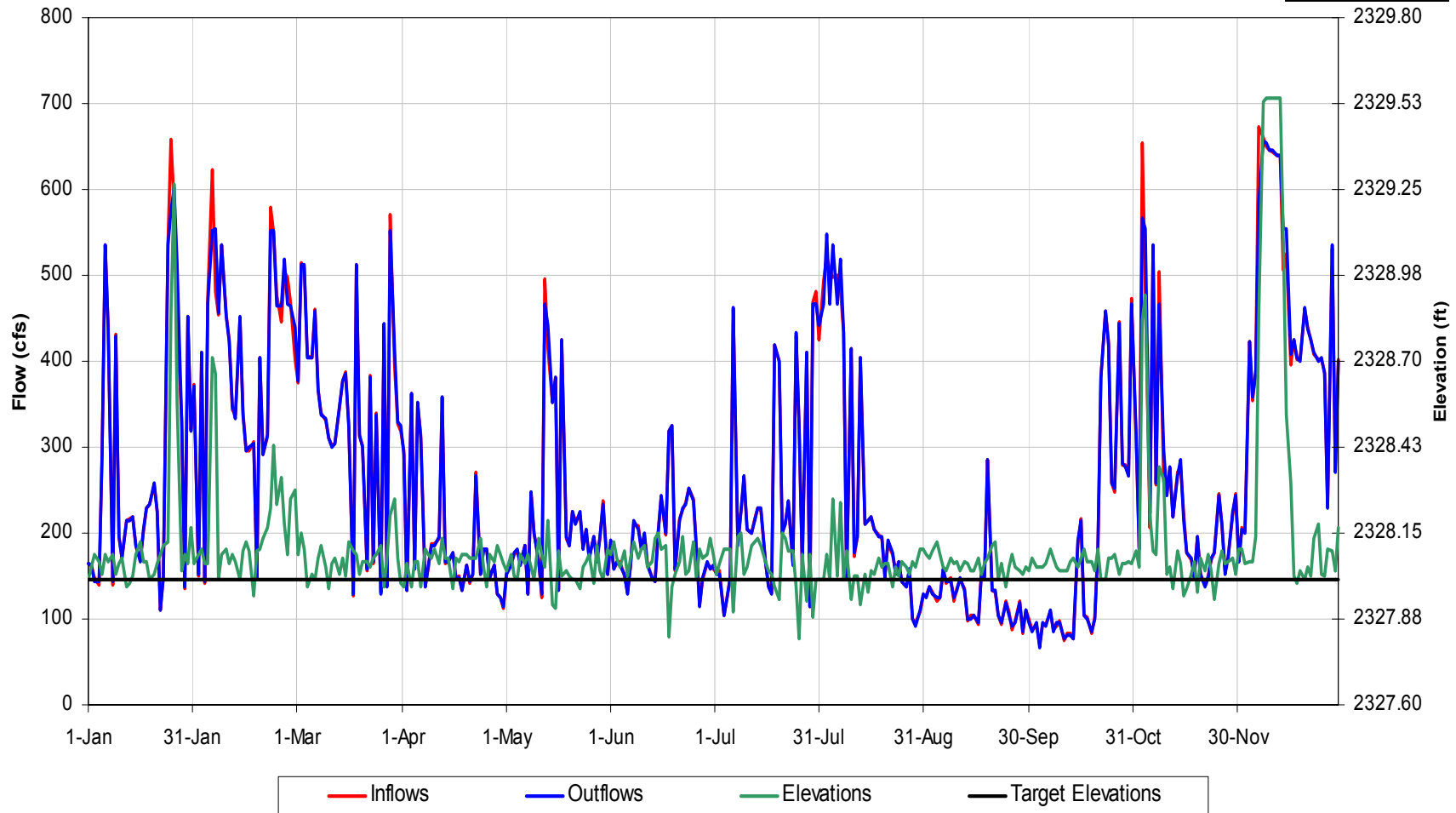
Cedar Cliff - Base Case

(Normal 1971)



Cedar Cliff Reservoir Operational Details
for 1971 Hydrology, Scenario 'Base Case'

Change Year



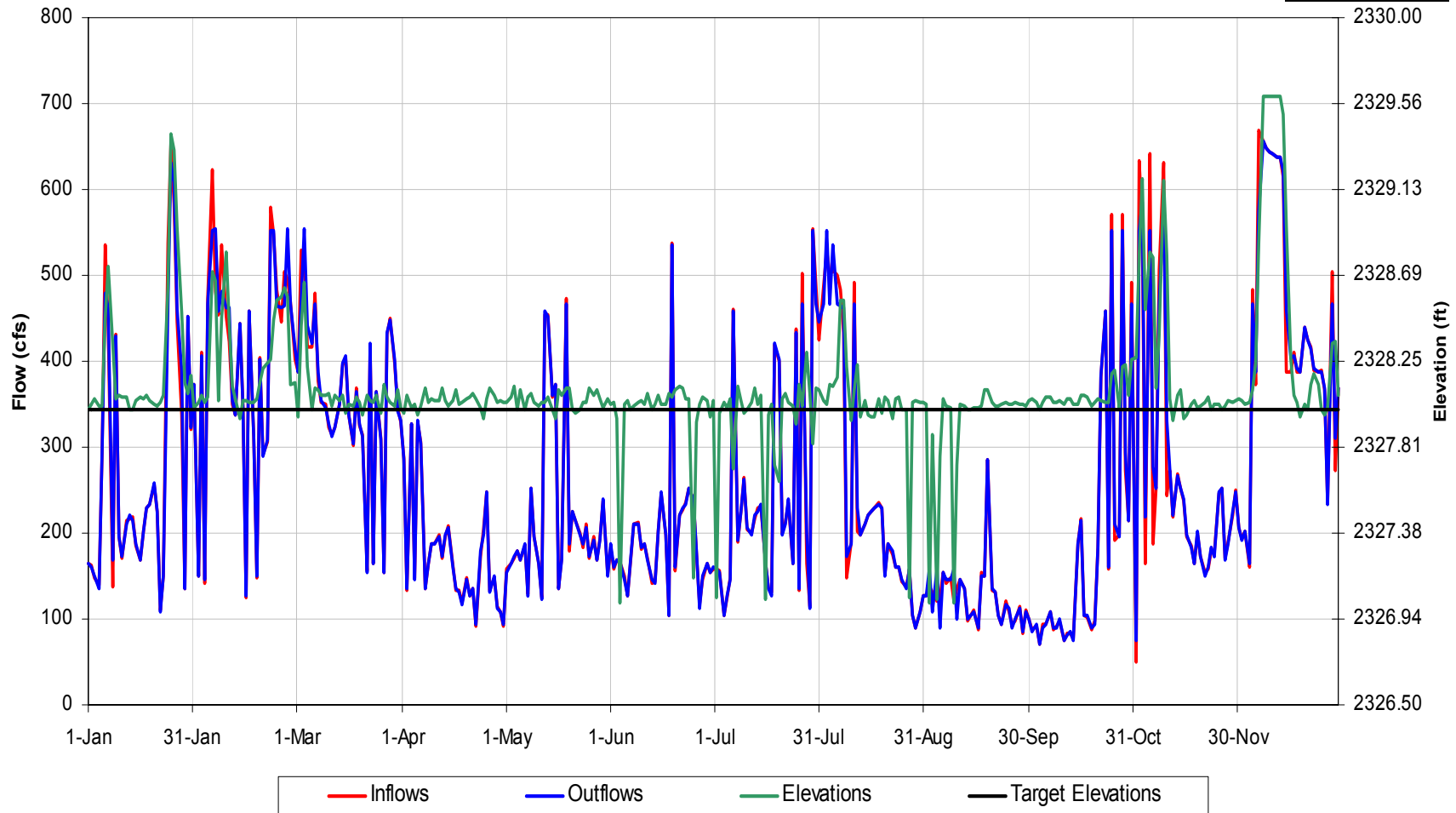
Cedar Cliff - Scenario 2

(Normal 1971)



Cedar Cliff Reservoir Operational Details
for 1971 Hydrology, Scenario 'Scn 2 Duke Tb'

Change Year



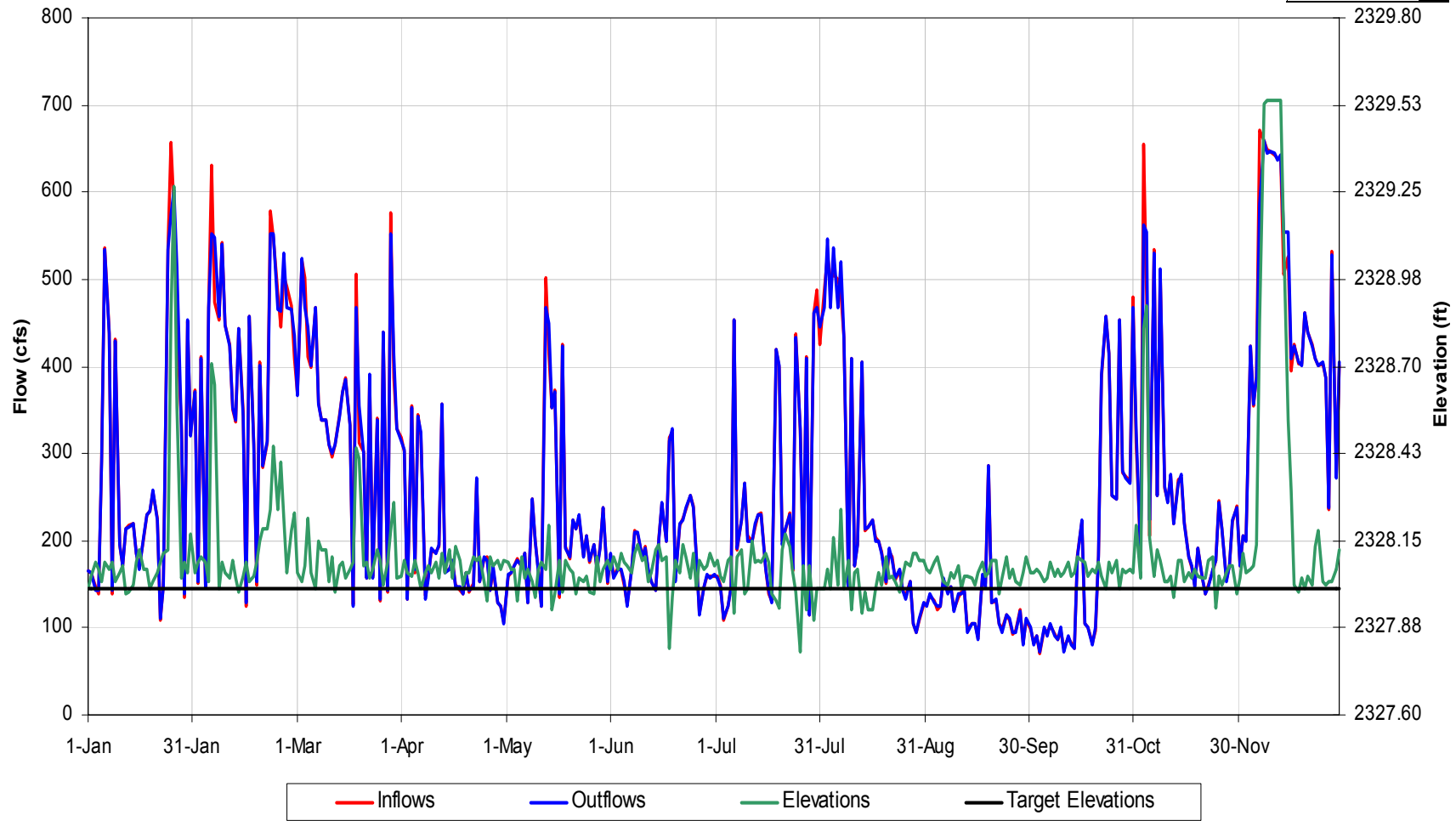
Cedar Cliff - Scenario 3

(Normal 1971)



Cedar Cliff Reservoir Operational Details
for 1971 Hydrology, Scenario 'Scn 3 Lk Glvl Hoa Rc'

Change Year



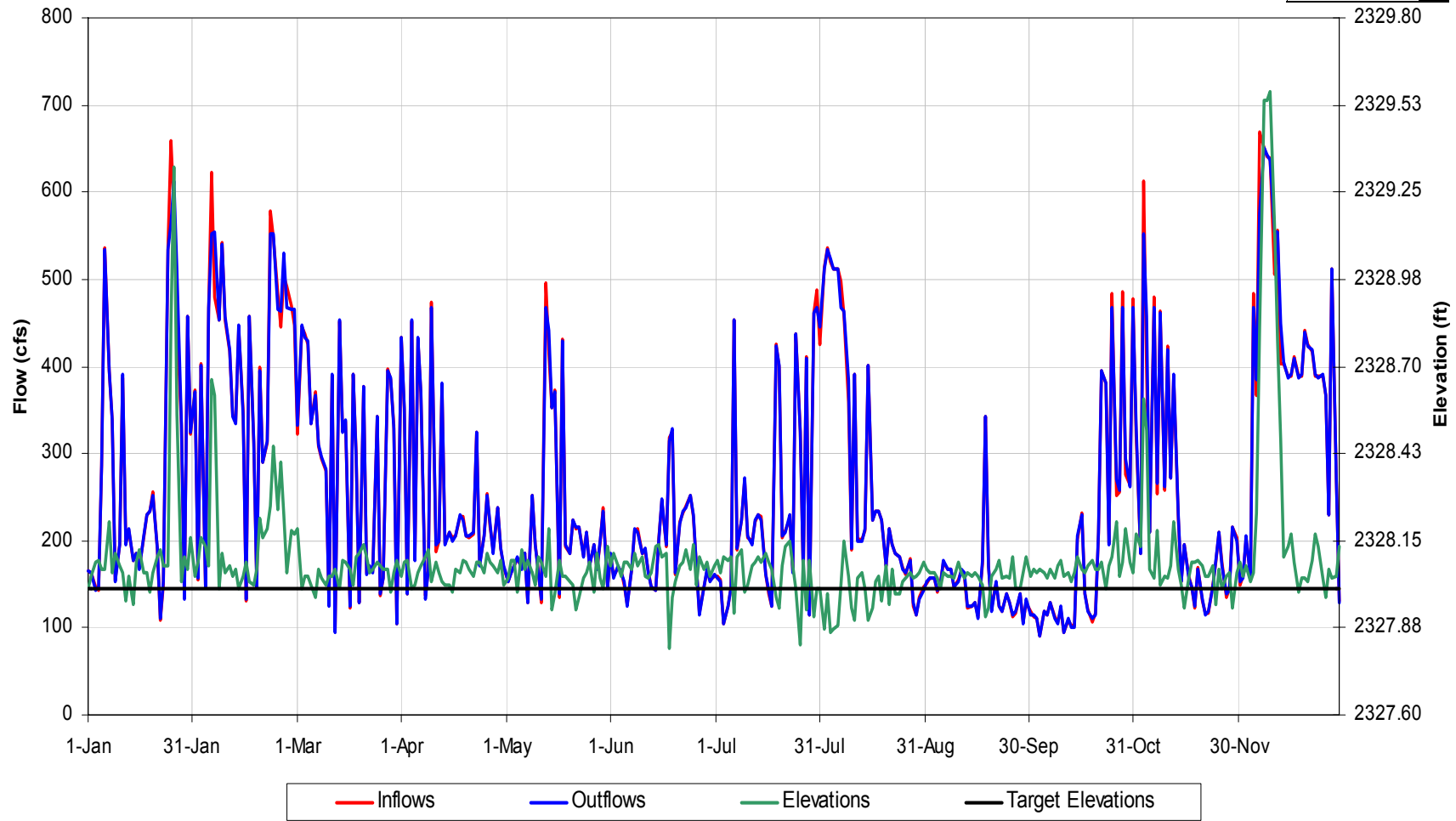
Cedar Cliff - Scenario 4

(Normal 1971)



Cedar Cliff Reservoir Operational Details
for 1971 Hydrology, Scenario 'Scn 4 NcwrC Rc'

Change Year



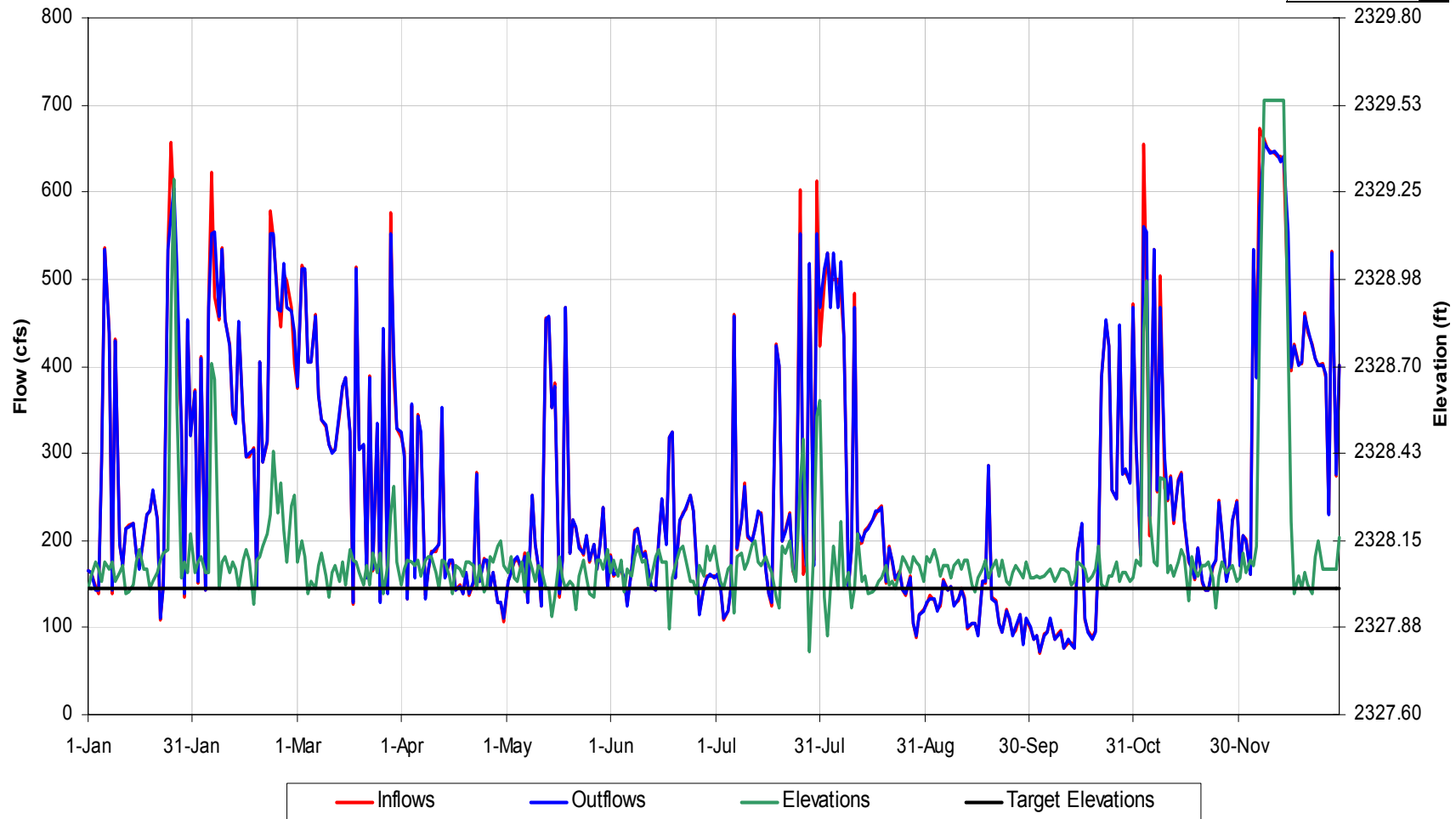
Cedar Cliff - Scenario 5

(Normal 1971)



Cedar Cliff Reservoir Operational Details
for 1971 Hydrology, Scenario 'Scn 5 Rec Flows_'

Change Year

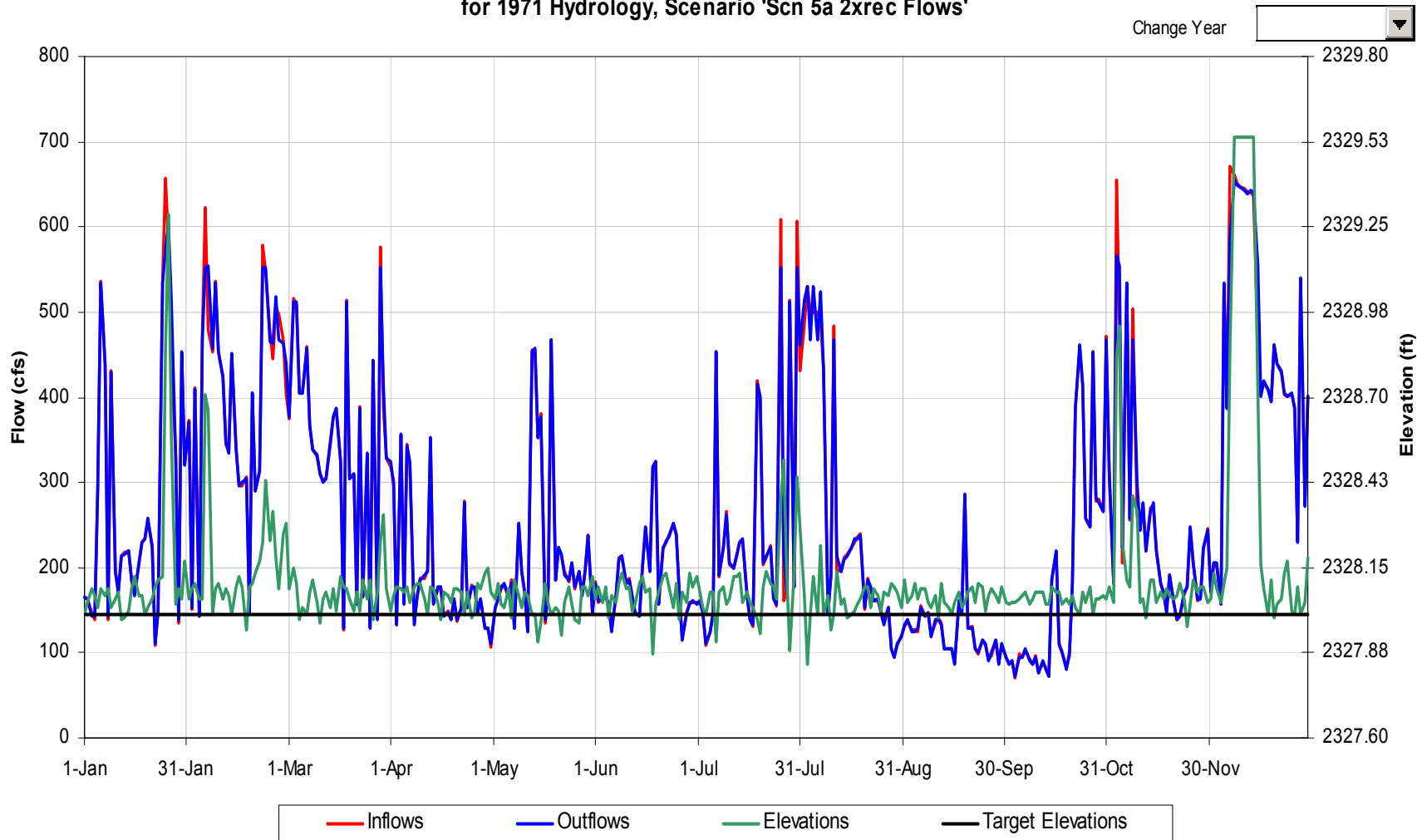


Cedar Cliff - Scenario 5A

(Normal 1971)



Cedar Cliff Reservoir Operational Details
for 1971 Hydrology, Scenario 'Scn 5a 2xrec Flows'



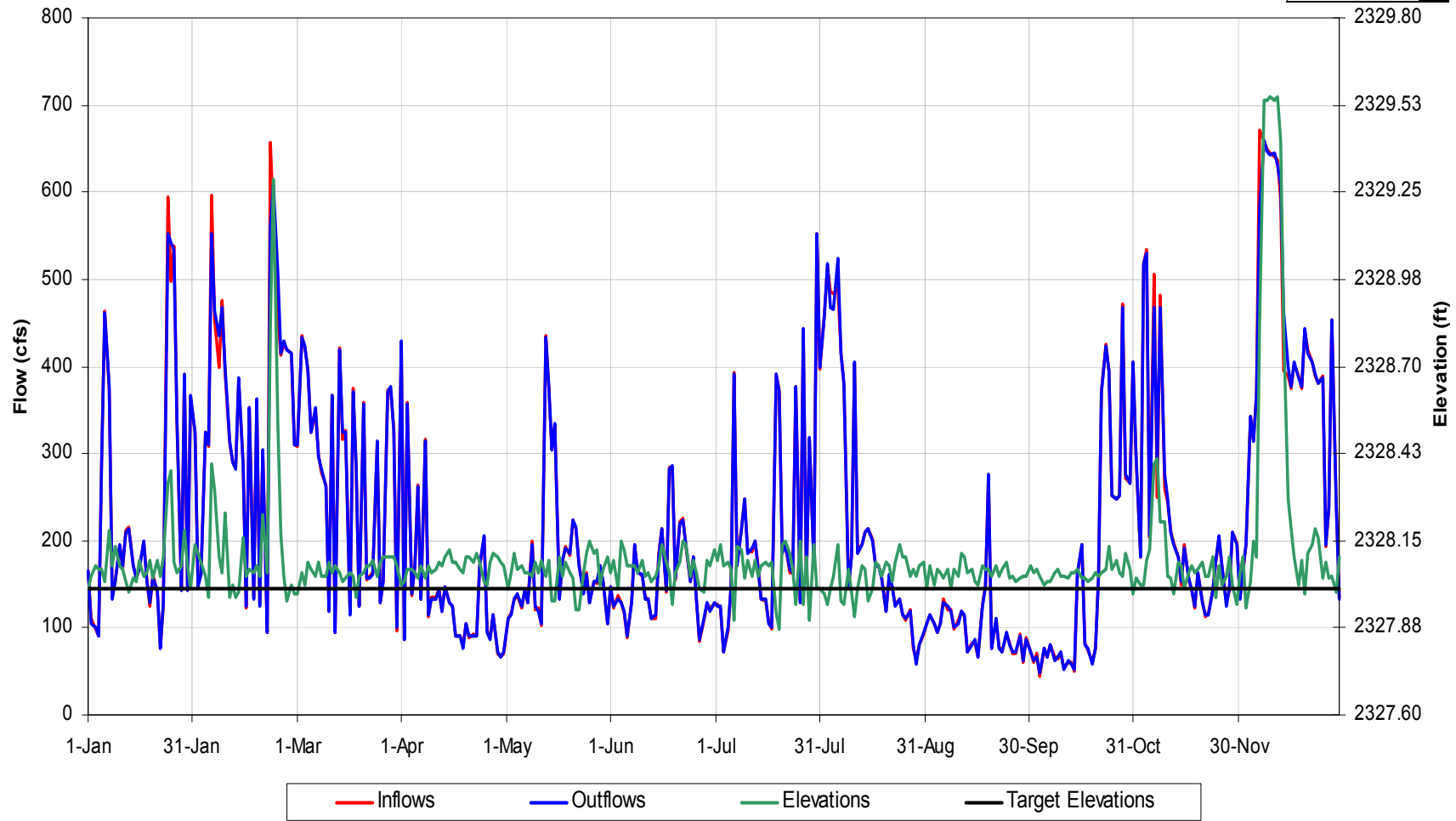
Cedar Cliff - Scenario 6

(Normal 1971)



Cedar Cliff Reservoir Operational Details
for 1971 Hydrology, Scenario 'Scn 6 Bpf'

Change Year



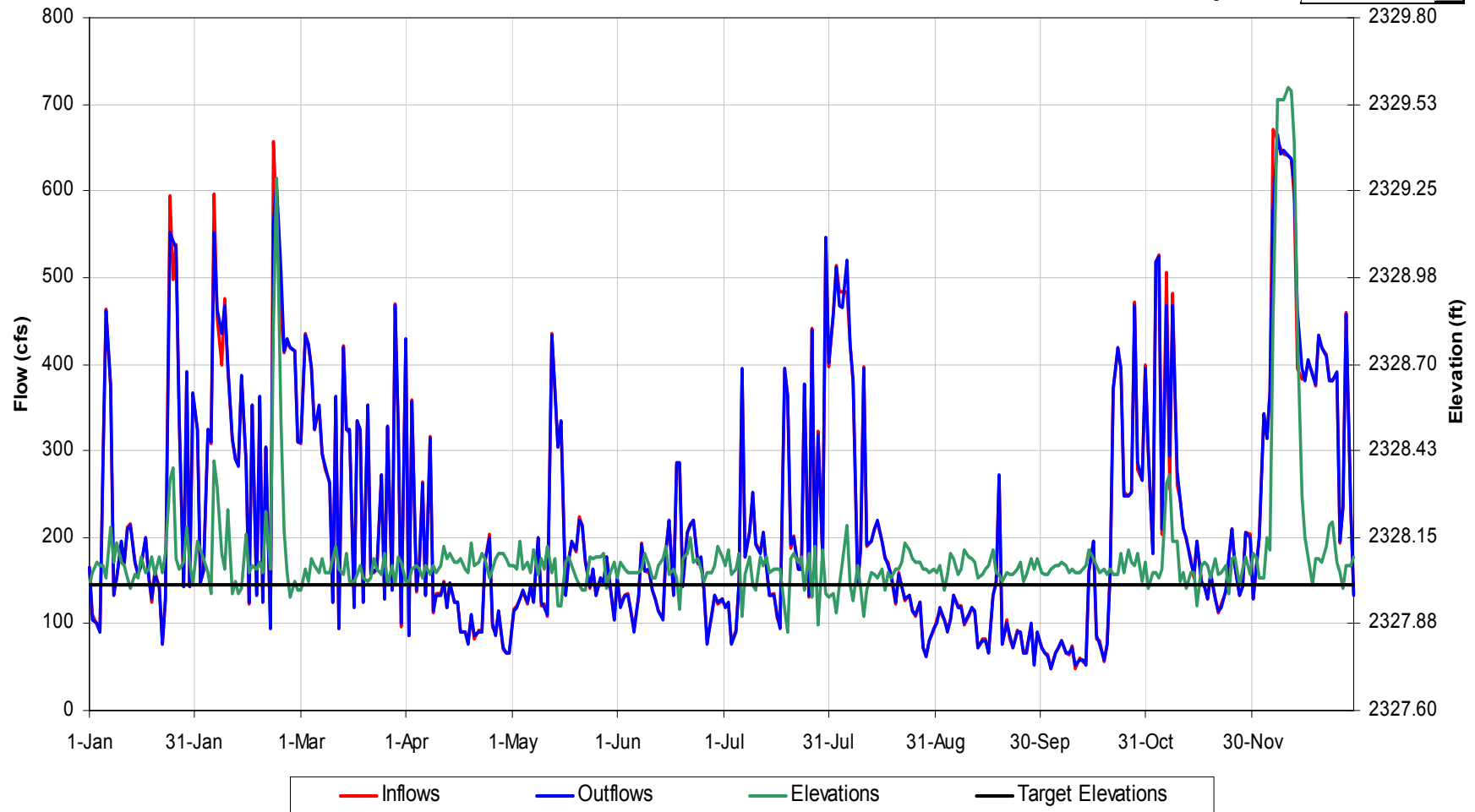
Cedar Cliff - Scenario 7

(Normal 1971)



Cedar Cliff Reservoir Operational Details
for 1971 Hydrology, Scenario 'Scn7 Bpf_'

Change Year

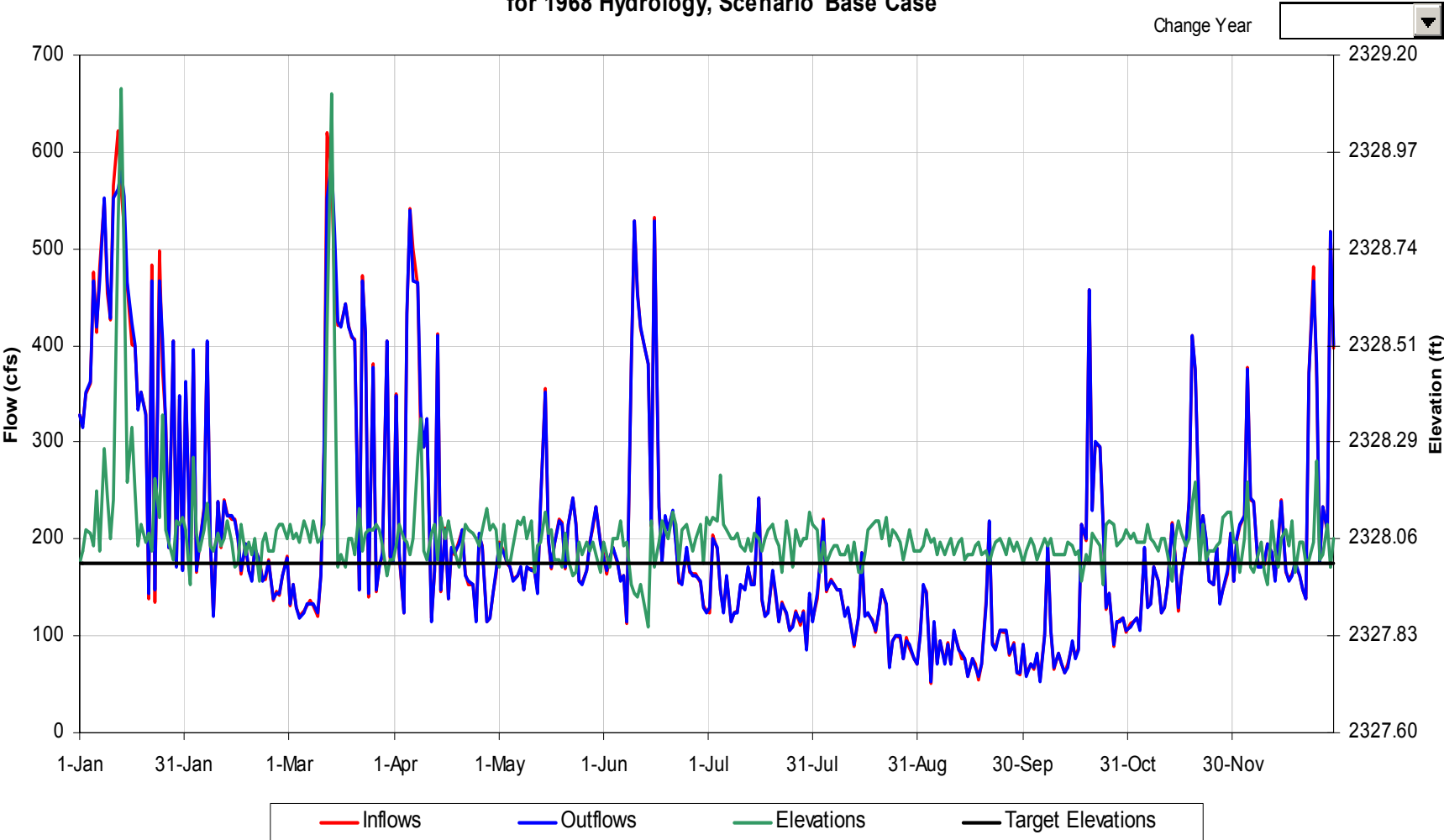


Cedar Cliff - Base Case

(Dry 1968)

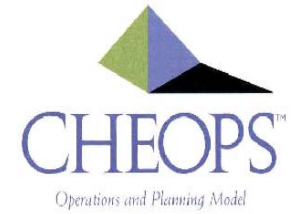


Cedar Cliff Reservoir Operational Details
for 1968 Hydrology, Scenario 'Base Case'



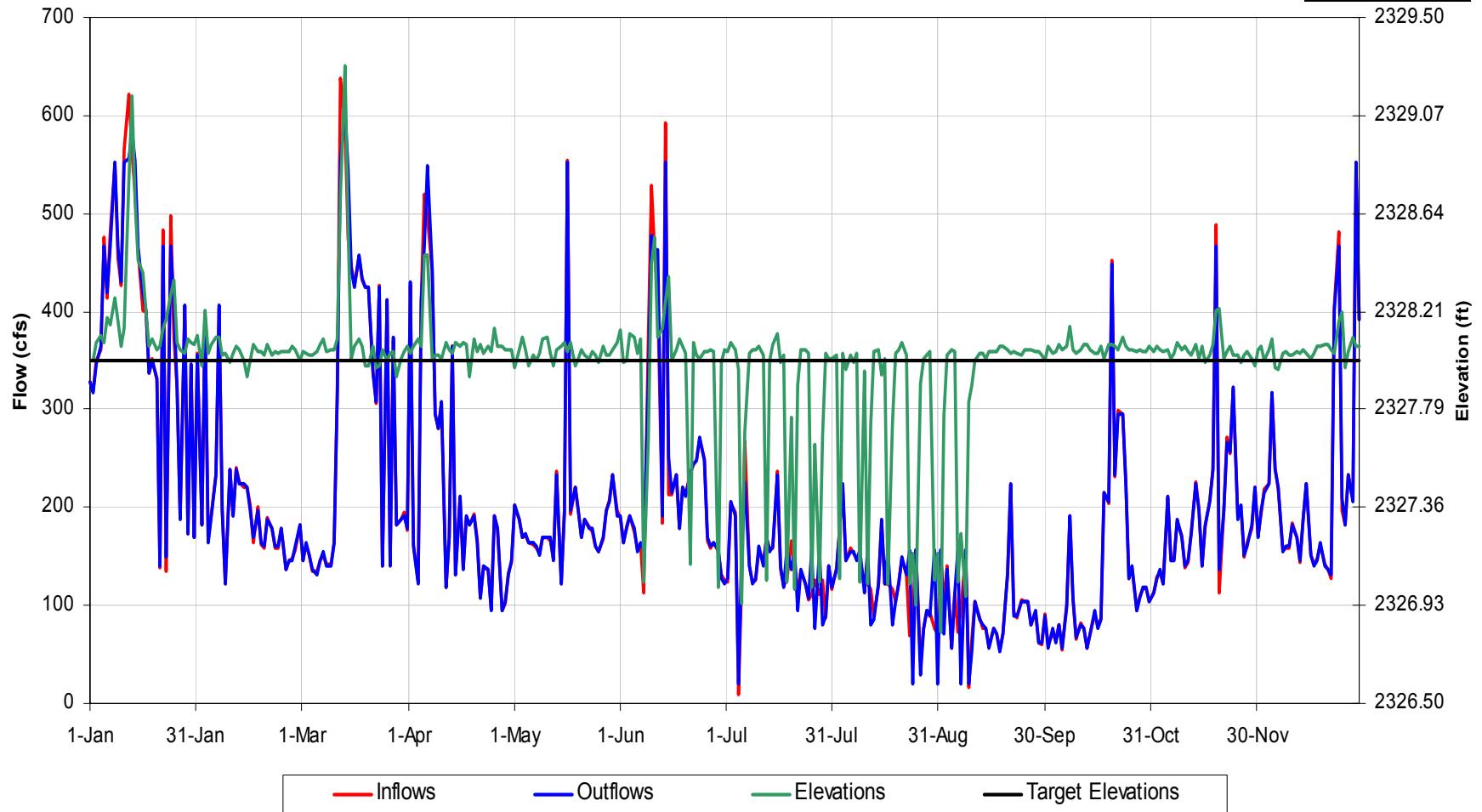
Cedar Cliff - Scenario 2

(Dry 1968)



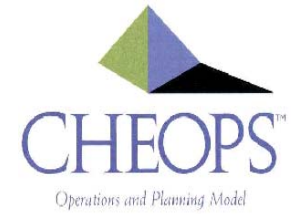
Cedar Cliff Reservoir Operational Details
for 1968 Hydrology, Scenario 'Scn 2 Duke Tb'

Change Year



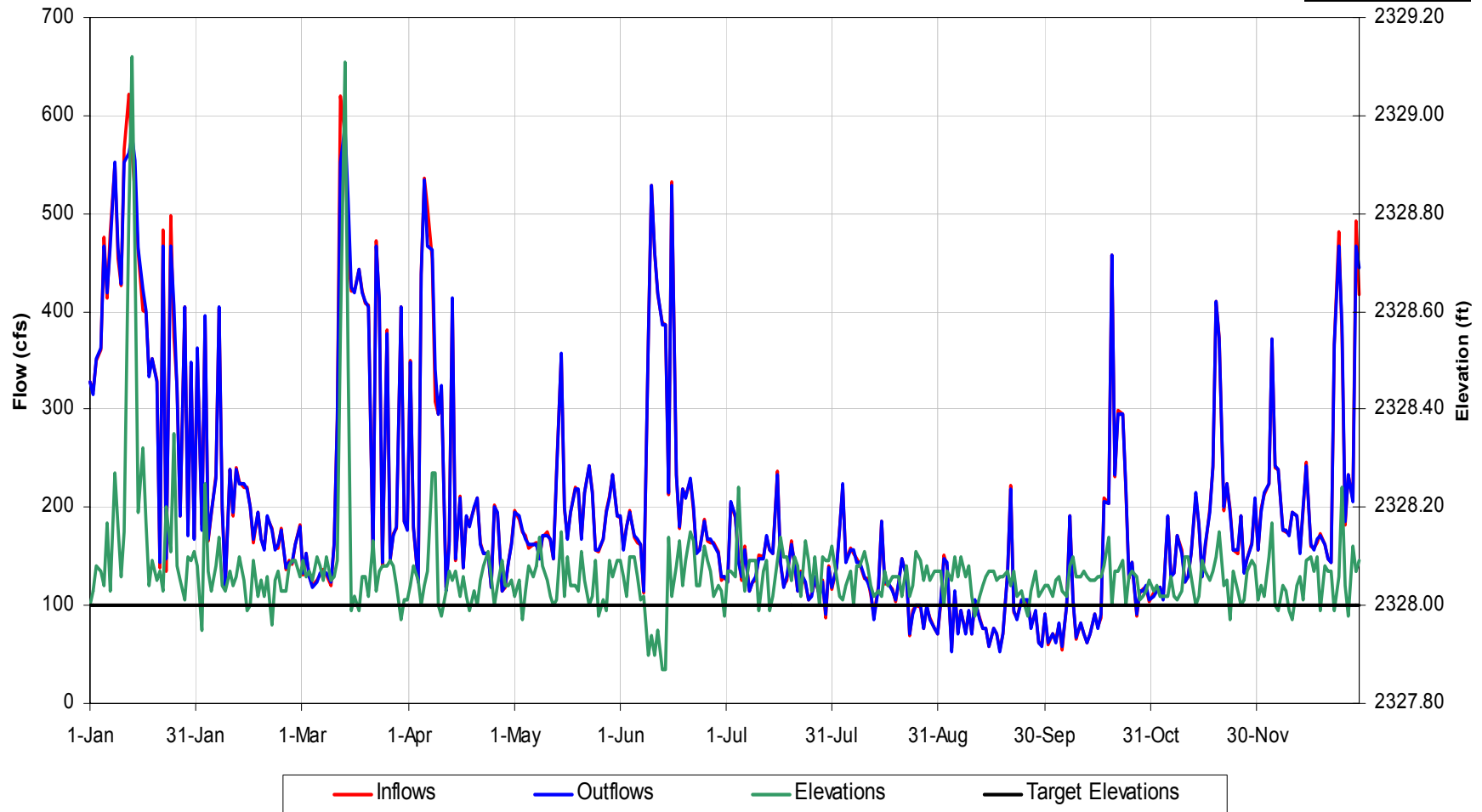
Cedar Cliff - Scenario 3

(Dry 1968)



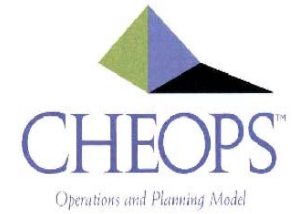
Cedar Cliff Reservoir Operational Details
for 1968 Hydrology, Scenario 'Scn 3 Lk Glvl Hoa Rc'

Change Year



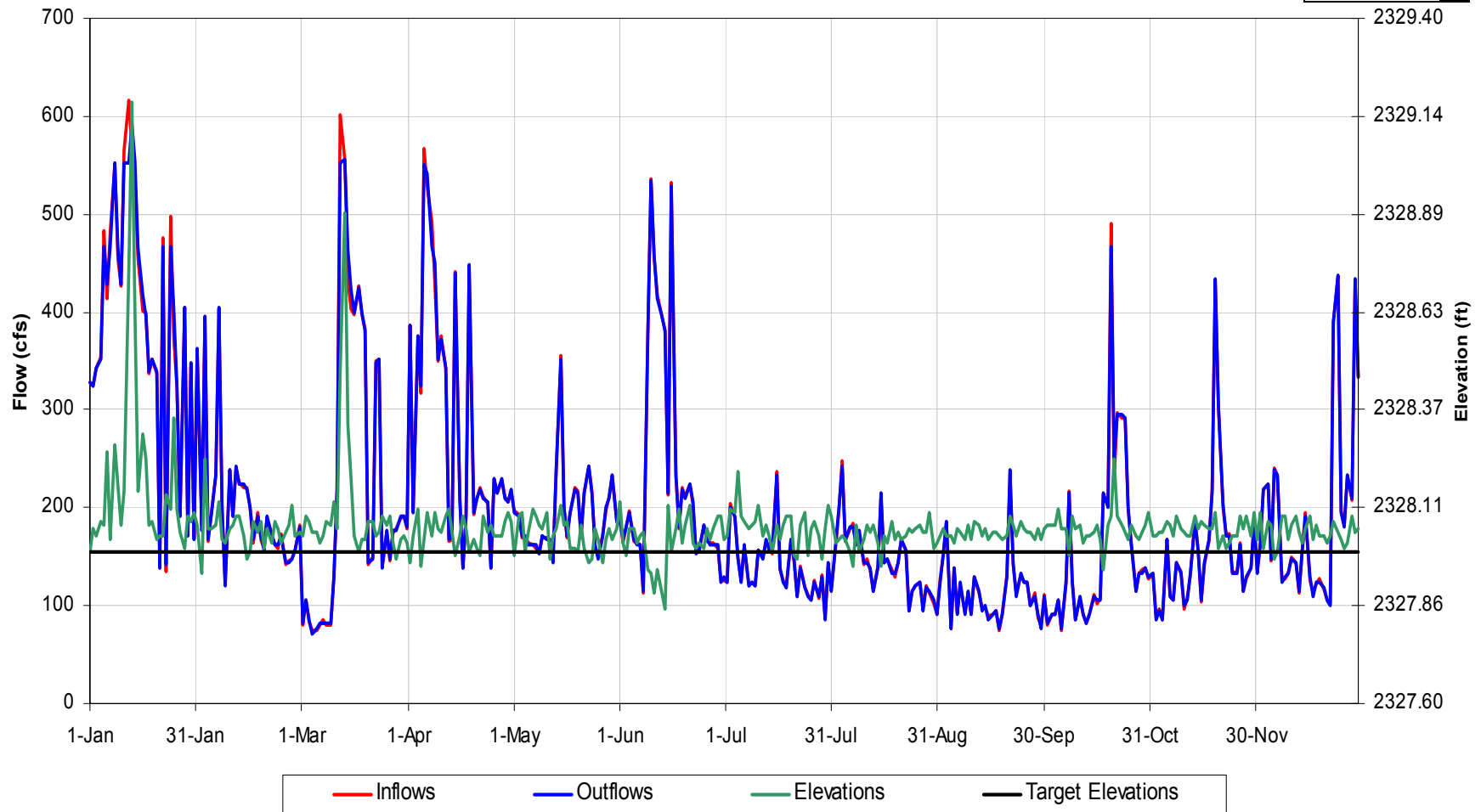
Cedar Cliff - Scenario 4

(Dry 1968)



Cedar Cliff Reservoir Operational Details
for 1968 Hydrology, Scenario 'Scn 4 NcwrC Rc'

Change Year



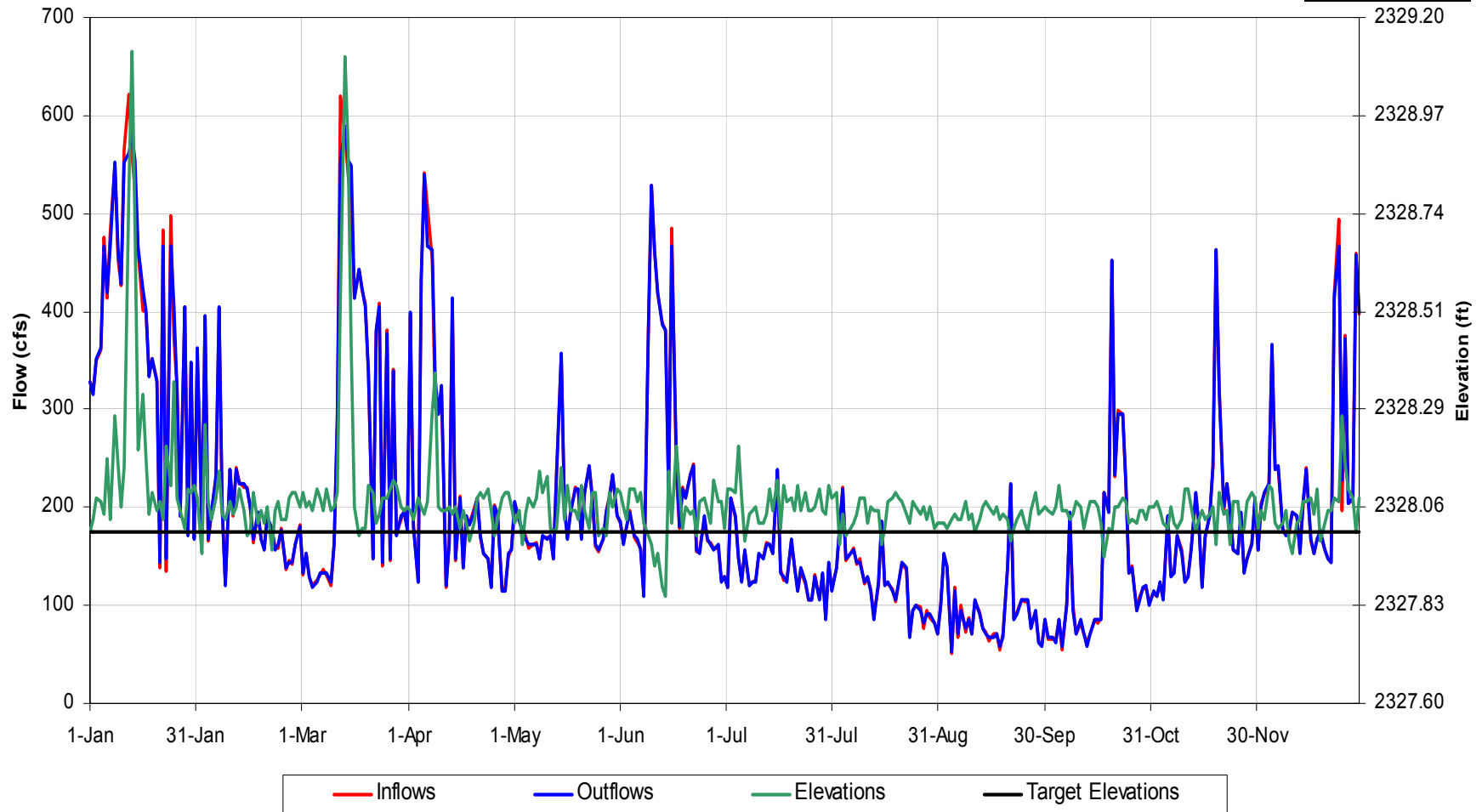
Cedar Cliff - Scenario 5

(Dry 1968)



Cedar Cliff Reservoir Operational Details
for 1968 Hydrology, Scenario 'Scn 5 Rec Flows_'

Change Year



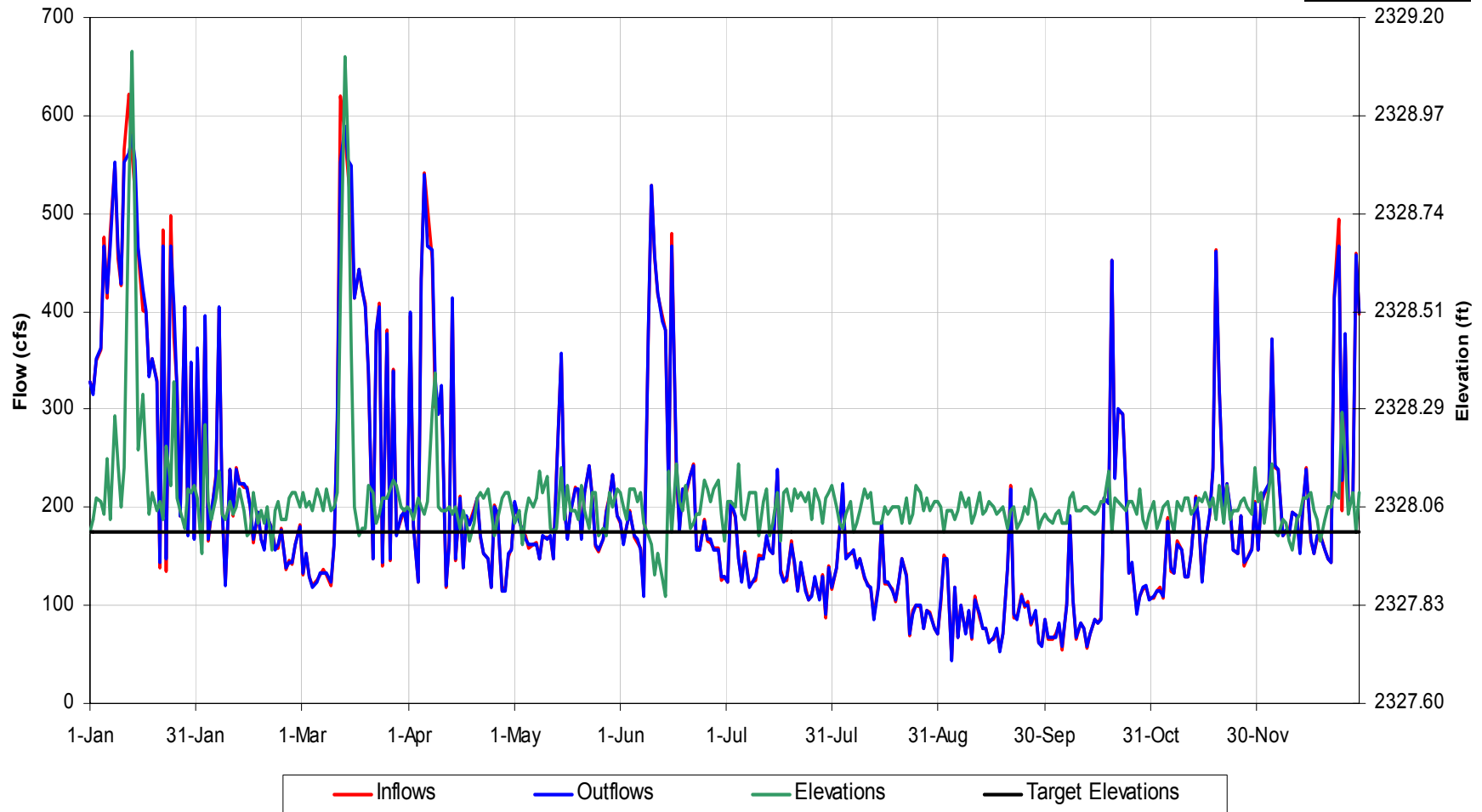
Cedar Cliff - Scenario 5A

(Dry 1968)



Cedar Cliff Reservoir Operational Details
for 1968 Hydrology, Scenario 'Scn 5a 2xrec Flows'

Change Year



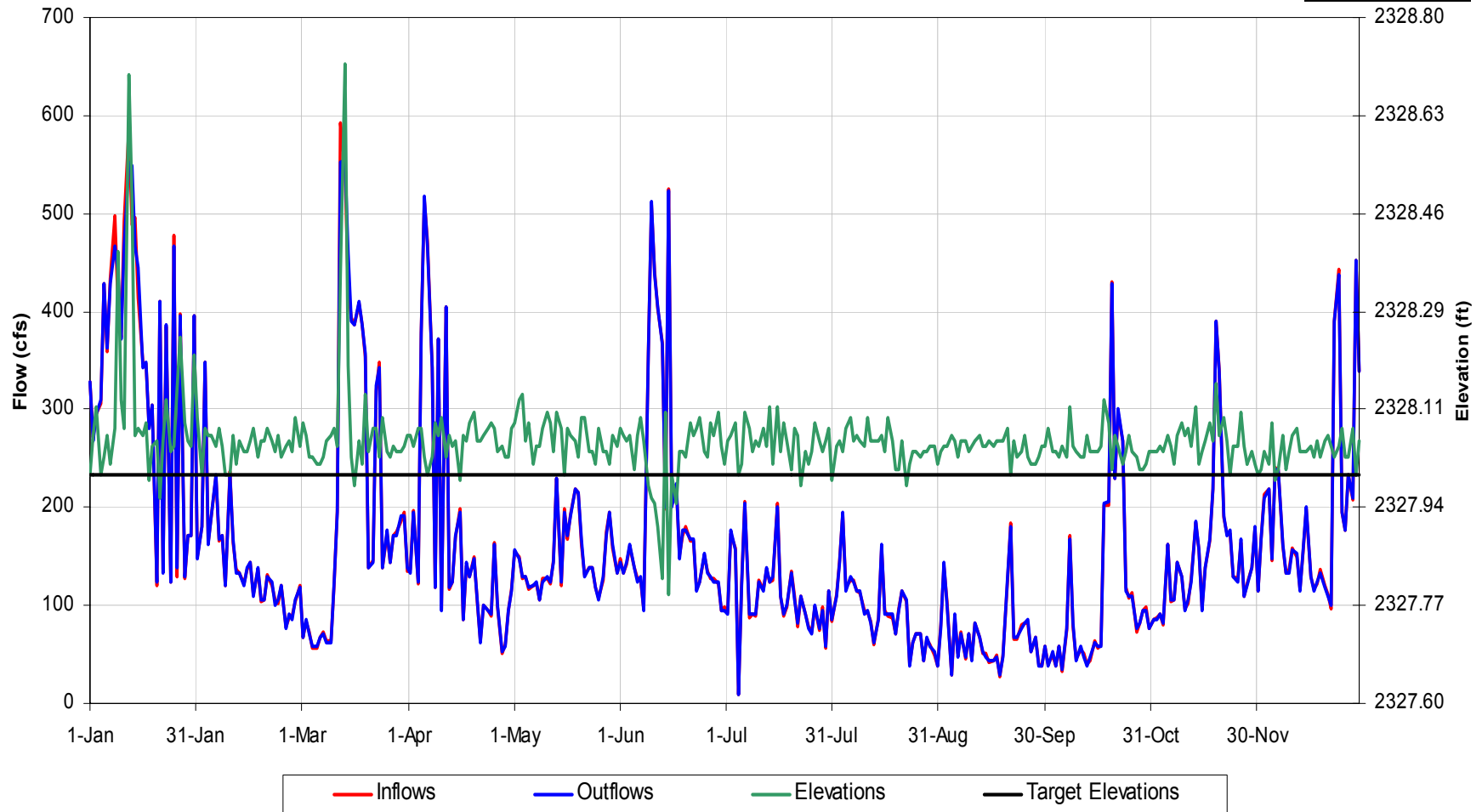
Cedar Cliff - Scenario 6

(Dry 1968)



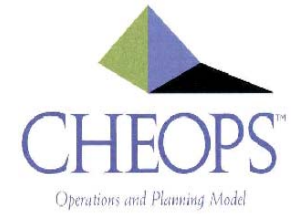
Cedar Cliff Reservoir Operational Details
for 1968 Hydrology, Scenario 'Scn 6 Bpf'

Change Year



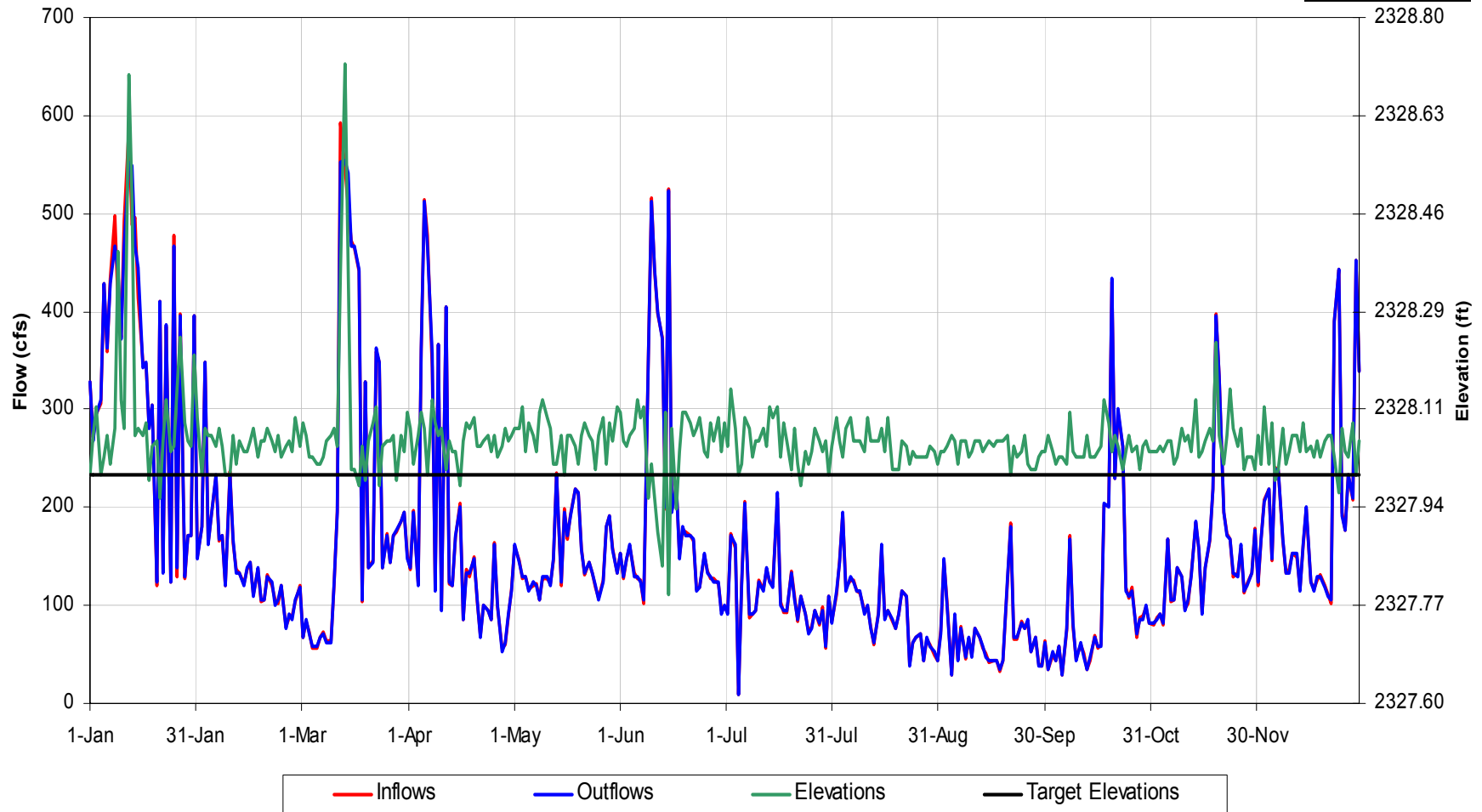
Cedar Cliff - Scenario 7

(Dry 1968)



Cedar Cliff Reservoir Operational Details
for 1968 Hydrology, Scenario 'Scn7 Bpf_'

Change Year



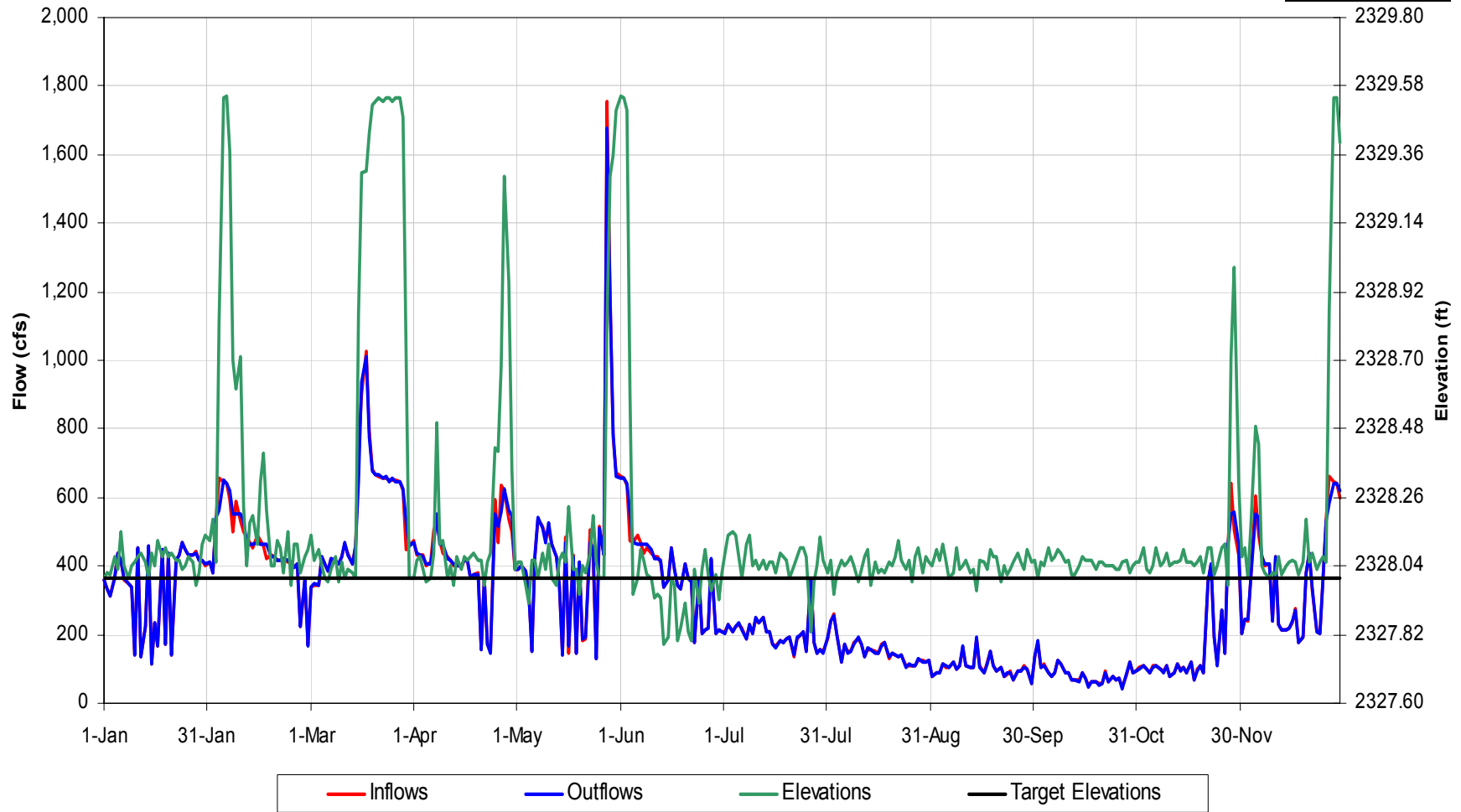
Cedar Cliff - Base Case

(Wet 1973)



Cedar Cliff Reservoir Operational Details
for 1973 Hydrology, Scenario 'Base Case'

Change Year



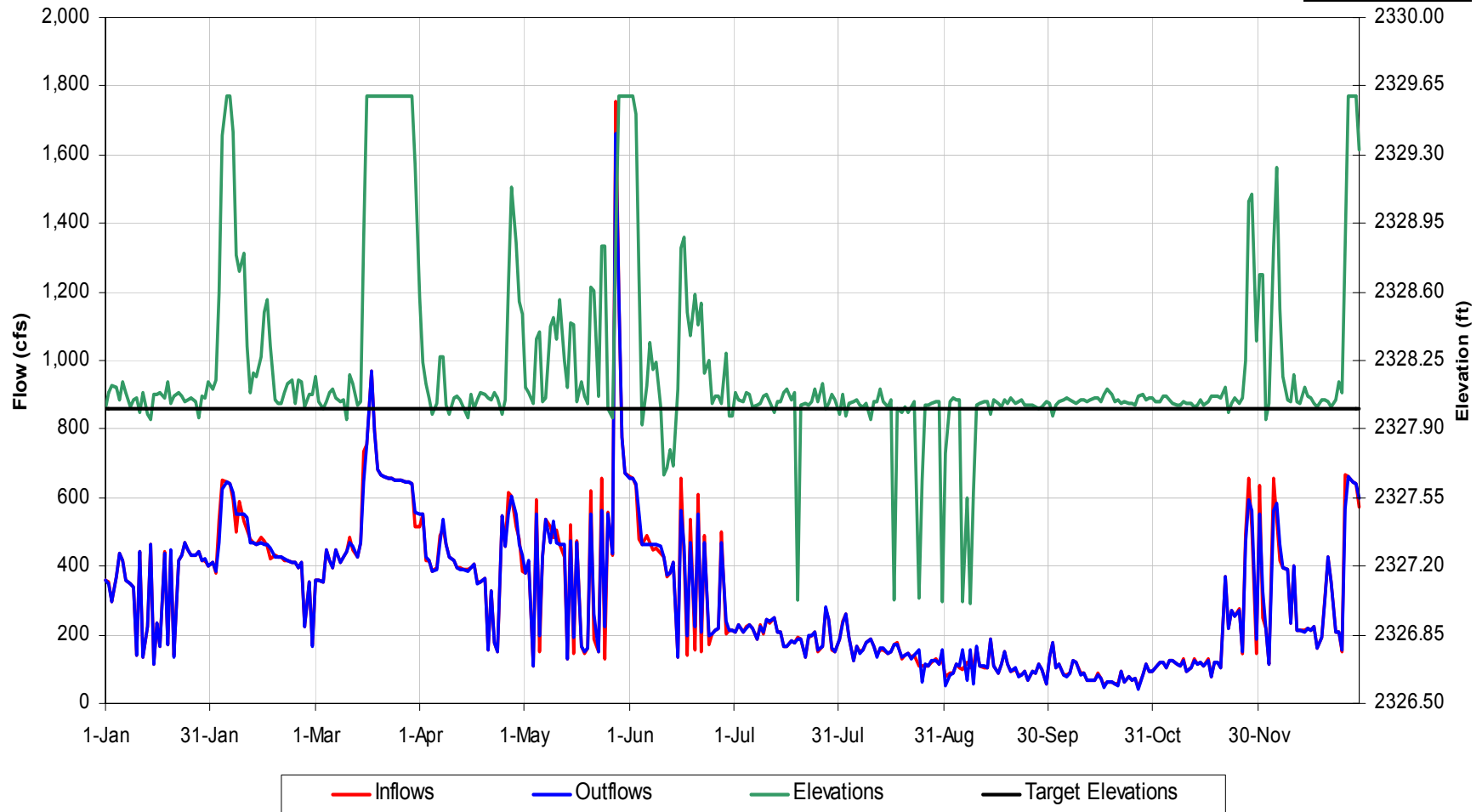
Cedar Cliff - Scenario 2

(Wet 1973)



Cedar Cliff Reservoir Operational Details
for 1973 Hydrology, Scenario 'Scn 2 Duke Tb'

Change Year



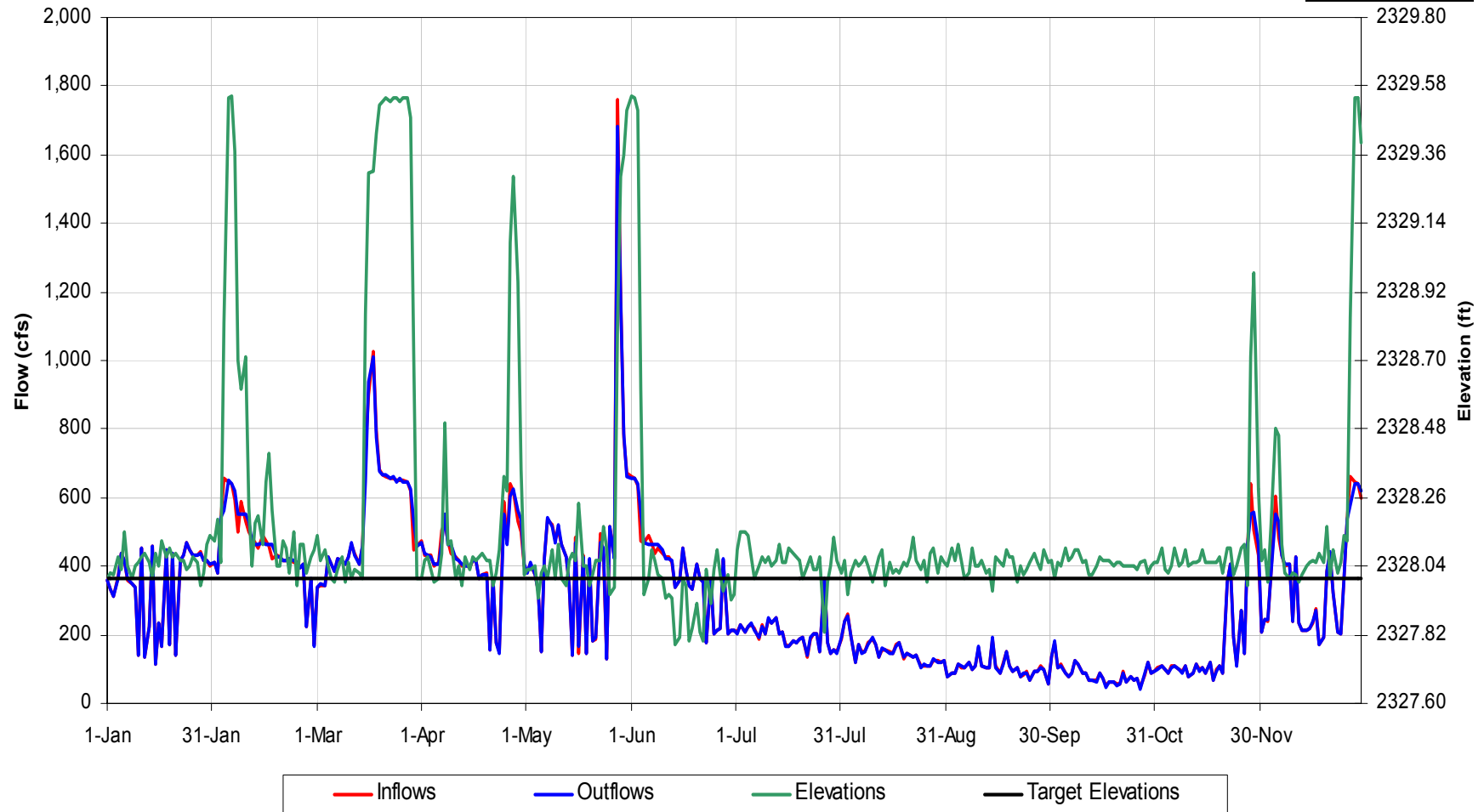
Cedar Cliff - Scenario 3

(Wet 1973)



Cedar Cliff Reservoir Operational Details
for 1973 Hydrology, Scenario 'Scn 3 Lk Glvl Hoa Rc'

Change Year



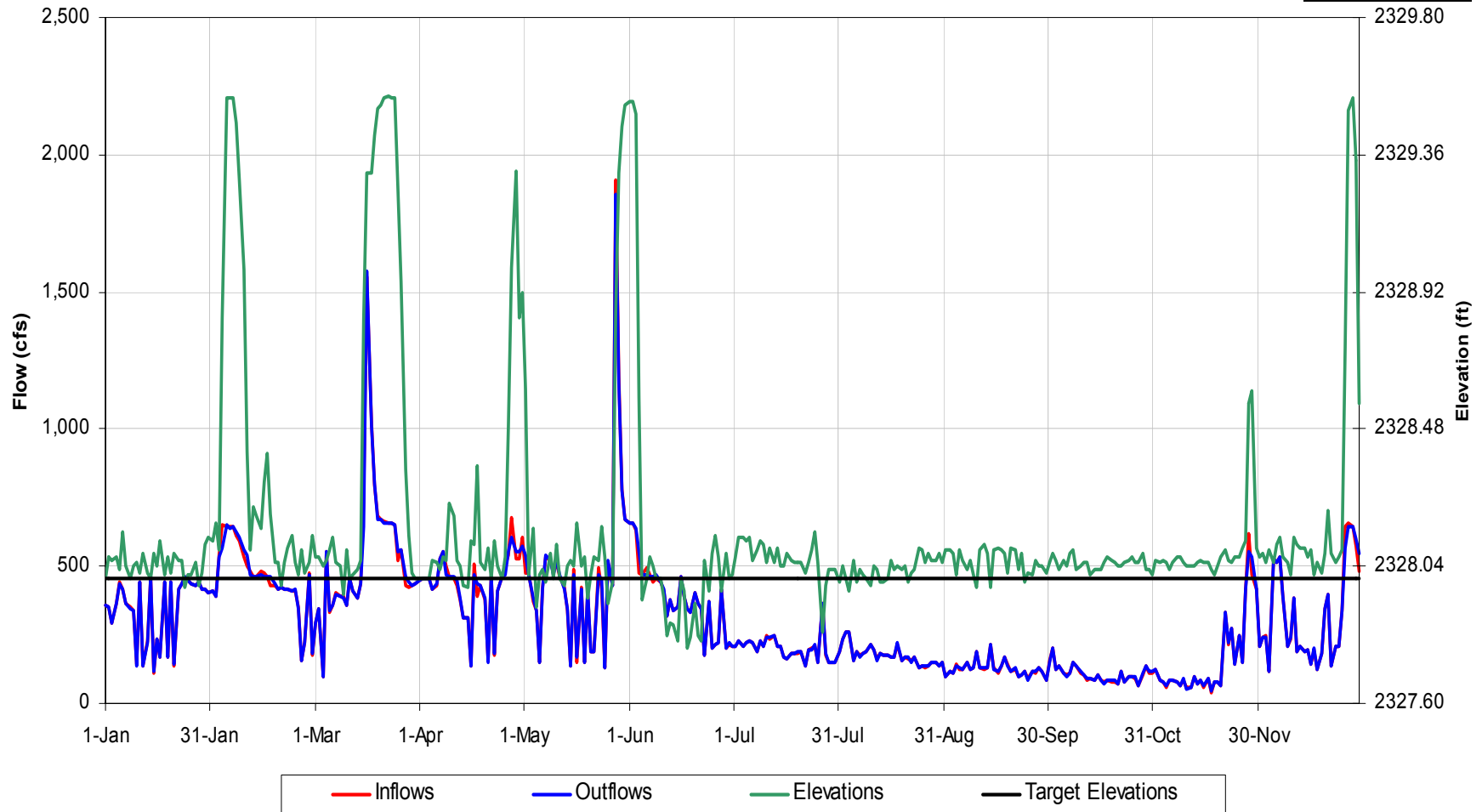
Cedar Cliff - Scenario 4

(Wet 1973)



Cedar Cliff Reservoir Operational Details
for 1973 Hydrology, Scenario 'Scn 4 Ncwr Rc'

Change Year



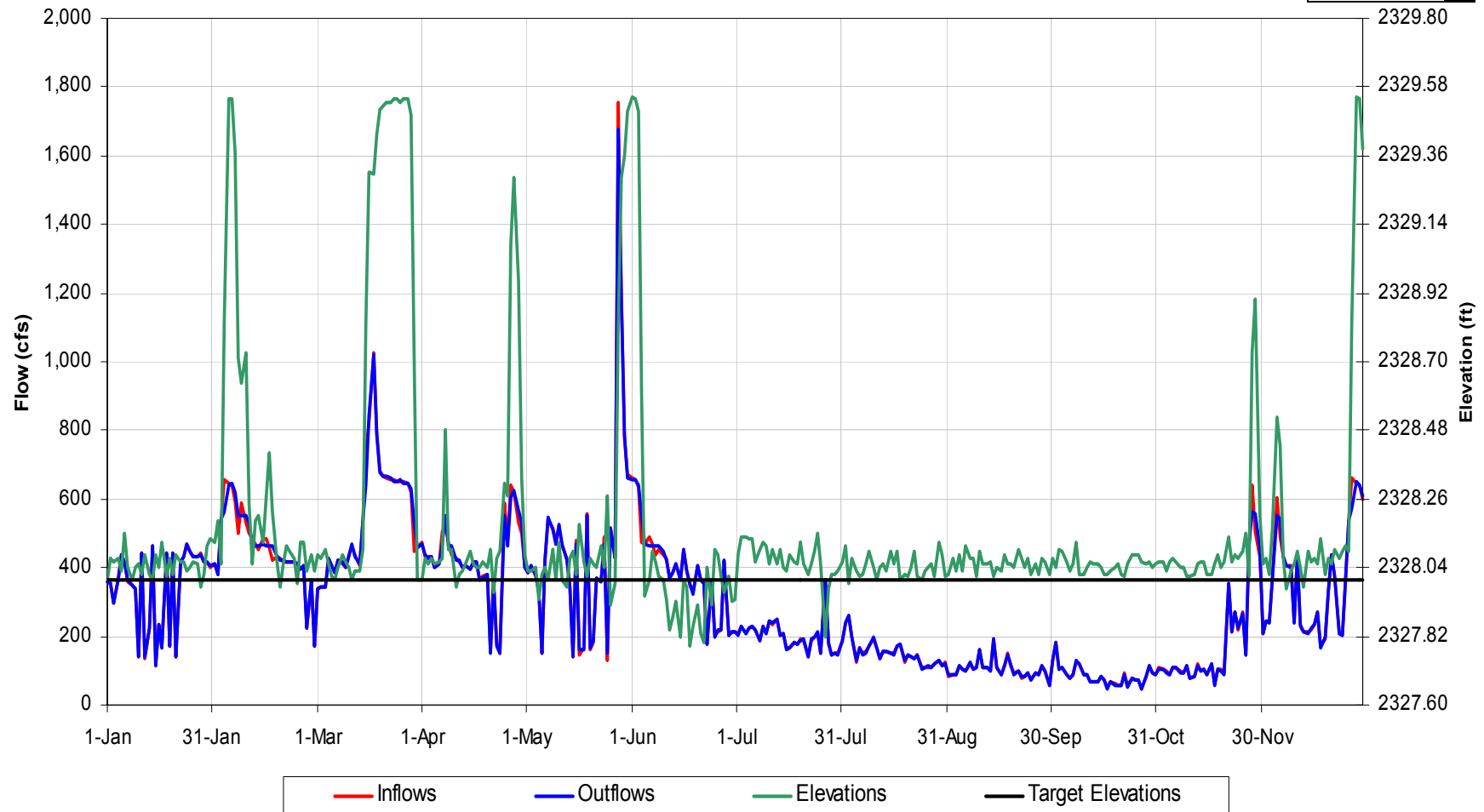
Cedar Cliff - Scenario 5

(Wet 1973)



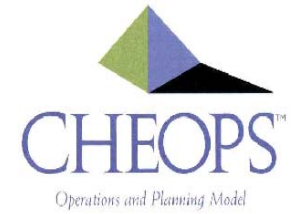
Cedar Cliff Reservoir Operational Details
for 1973 Hydrology, Scenario 'Scn 5 Rec Flows_'

Change Year



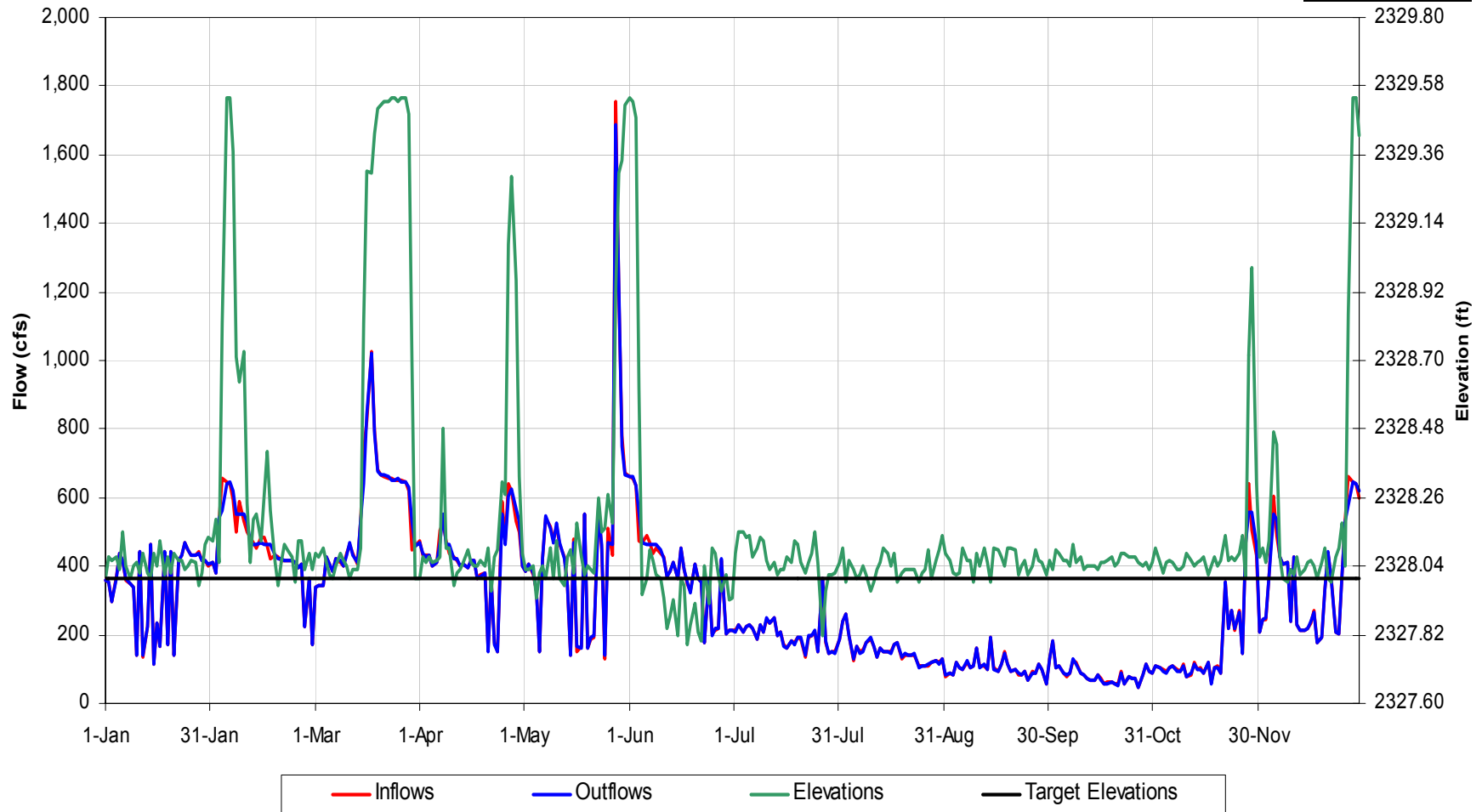
Cedar Cliff - Scenario 5A

(Wet 1973)



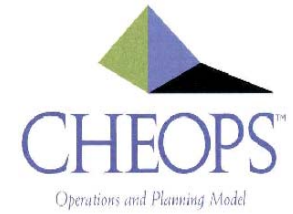
Cedar Cliff Reservoir Operational Details
for 1973 Hydrology, Scenario 'Scn 5a 2xrec Flows'

Change Year



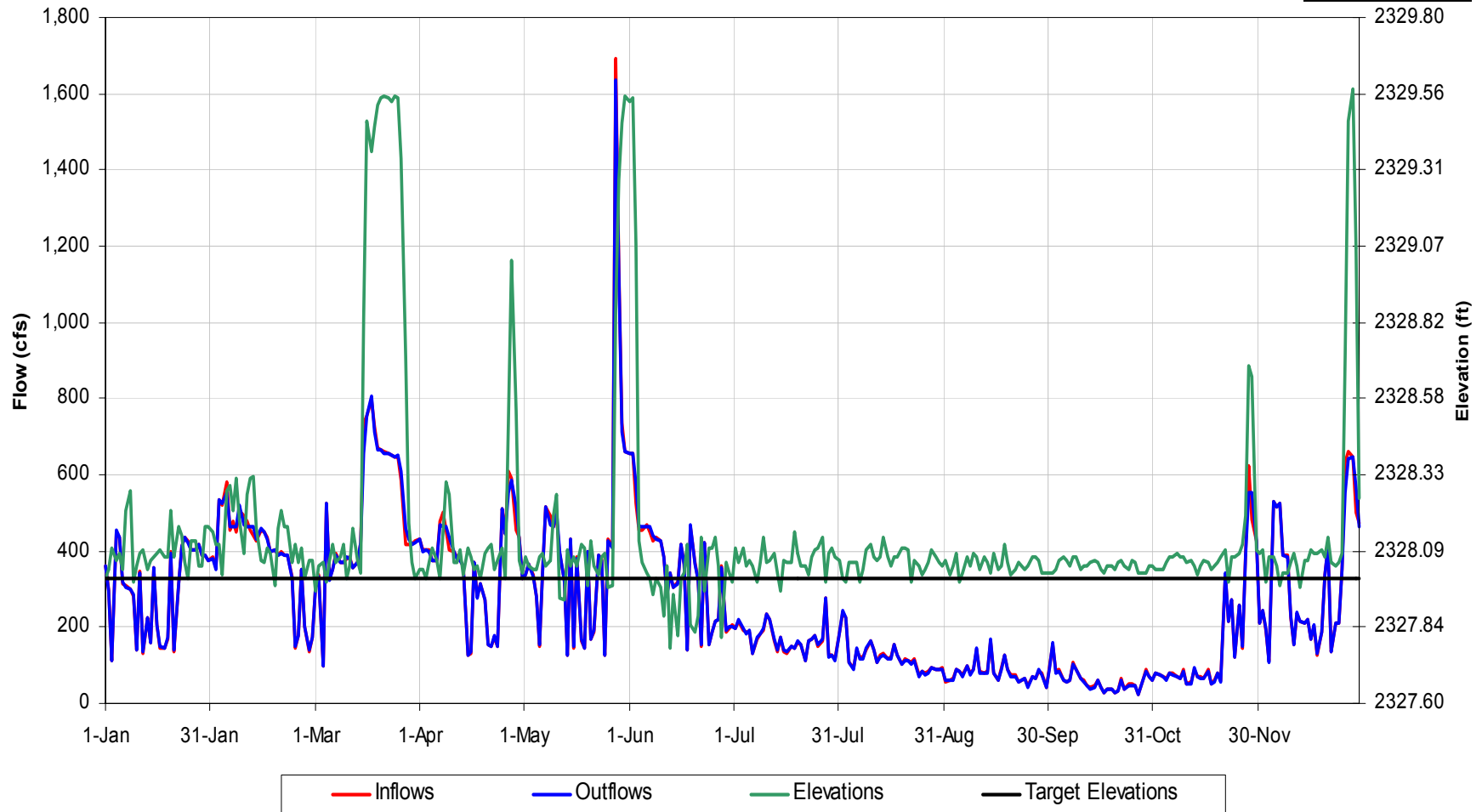
Cedar Cliff - Scenario 6

(Wet 1973)



Cedar Cliff Reservoir Operational Details
for 1973 Hydrology, Scenario 'Scn 6 Bpf'

Change Year



Cedar Cliff - Scenario 7

(Wet 1973)



Cedar Cliff Reservoir Operational Details
for 1973 Hydrology, Scenario 'Scn7 Bpf_'

Change Year

