

CHEOPS Model



Bear Creek Scenario Output



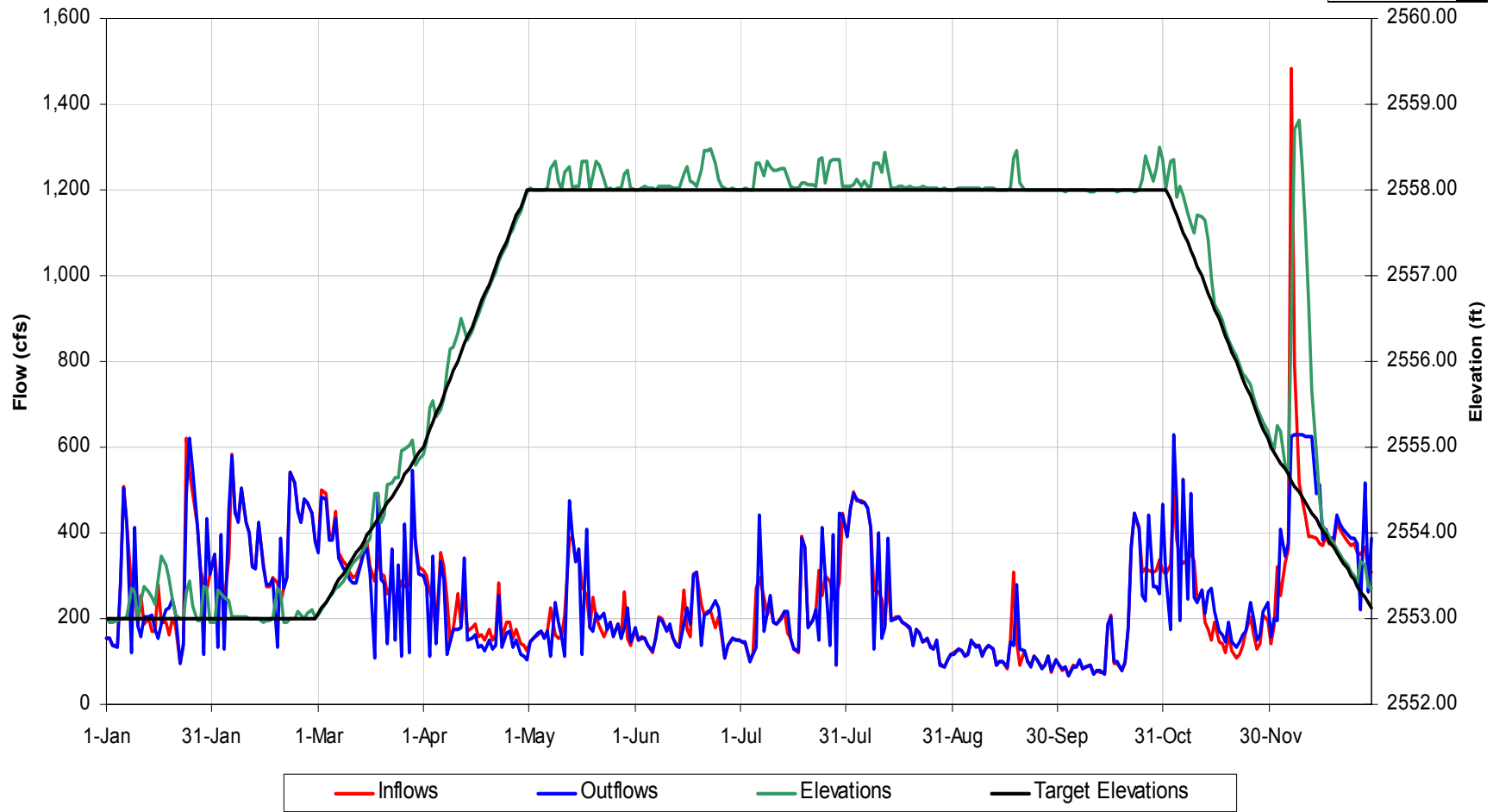
Bear Creek - Base Case

(Normal 1971)



Bear Creek Reservoir Operational Details
for 1971 Hydrology, Scenario 'Base Case'

Change Year



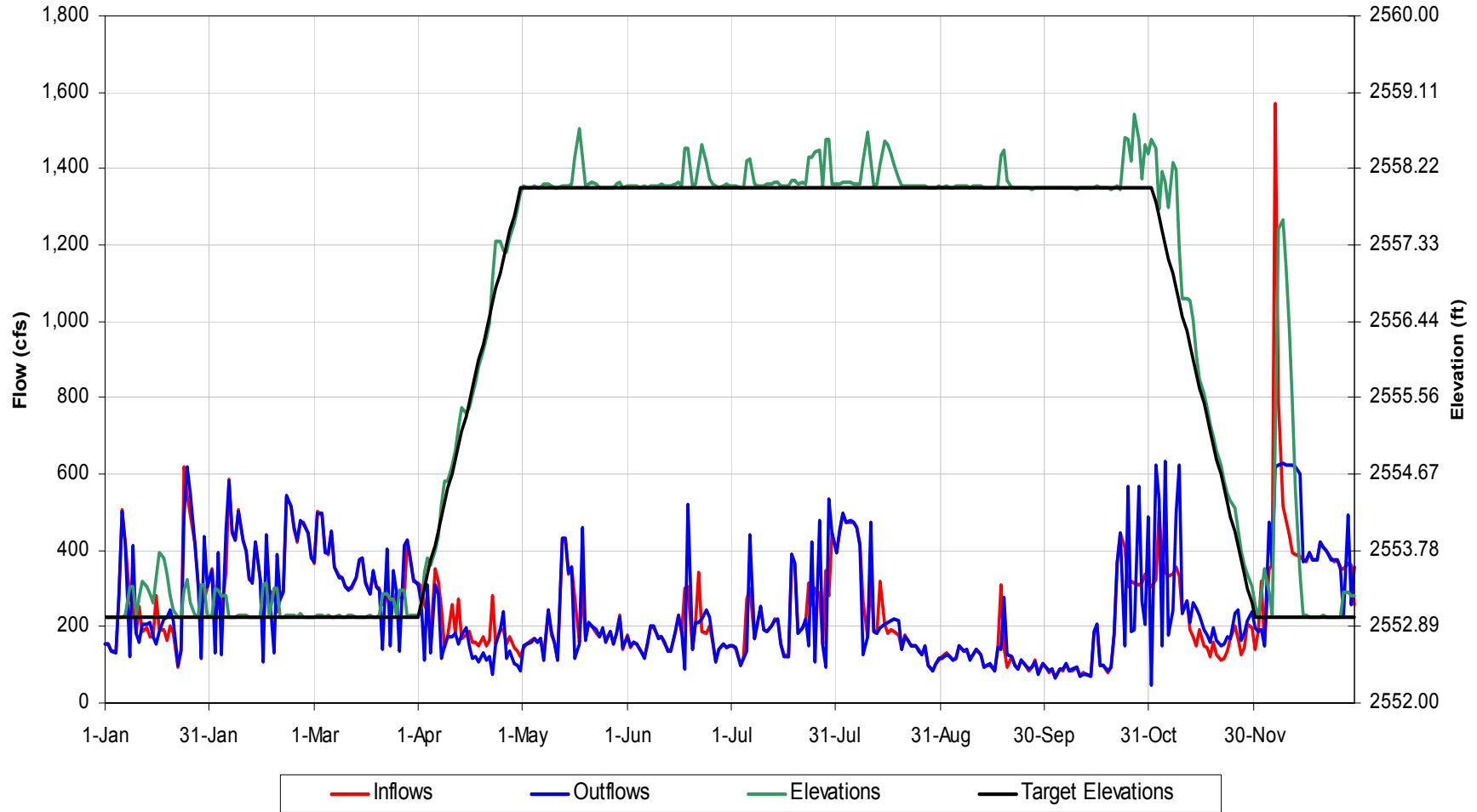
Bear Creek - Scenario 2

(Normal 1971)



Bear Creek Reservoir Operational Details
for 1971 Hydrology, Scenario 'Scn 2 Duke Tb'

Change Year



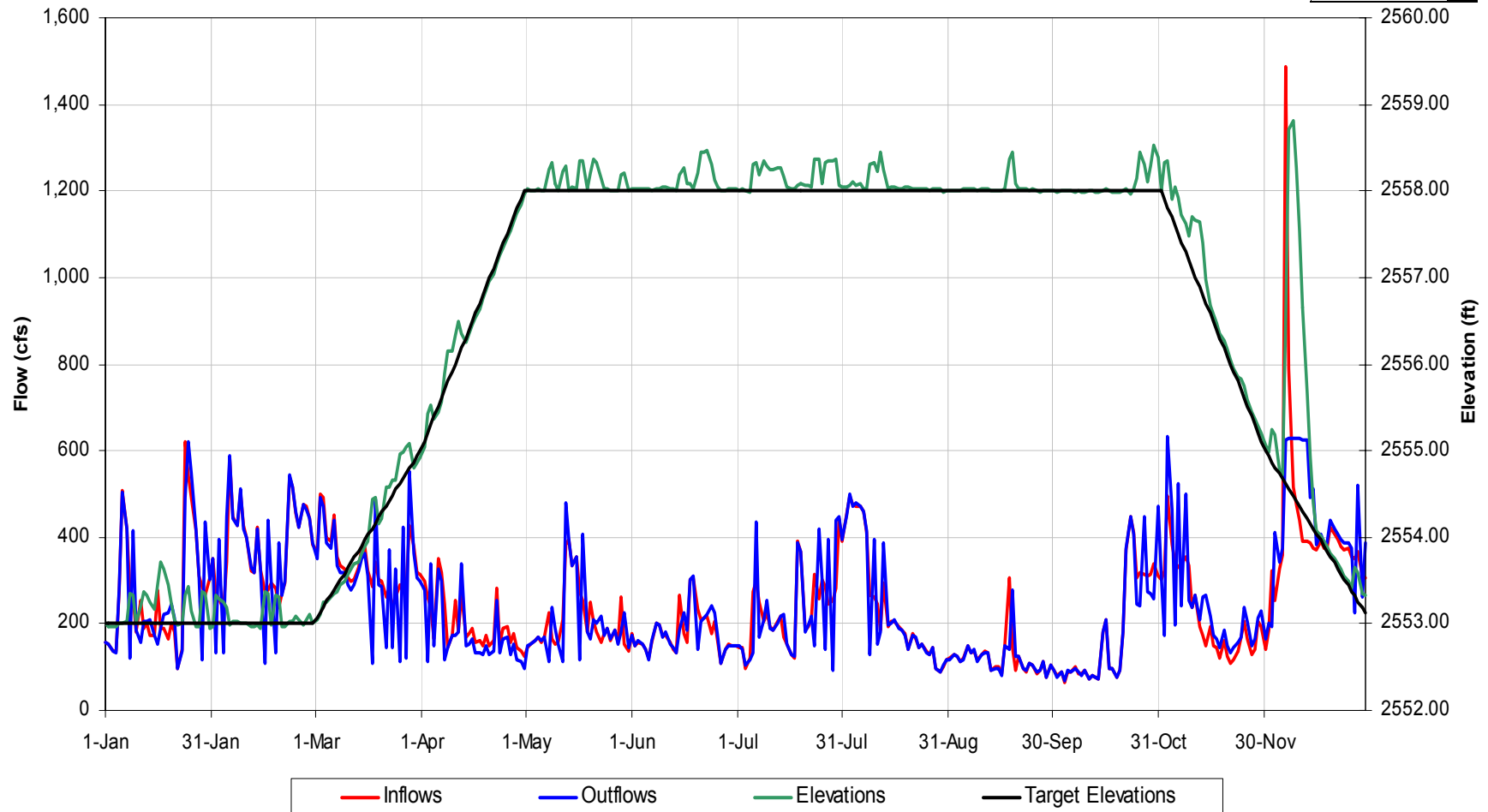
Bear Creek - Scenario 3

(Normal 1971)



Bear Creek Reservoir Operational Details
for 1971 Hydrology, Scenario 'Scn 3 Lk Glvl Hoa Rc'

Change Year



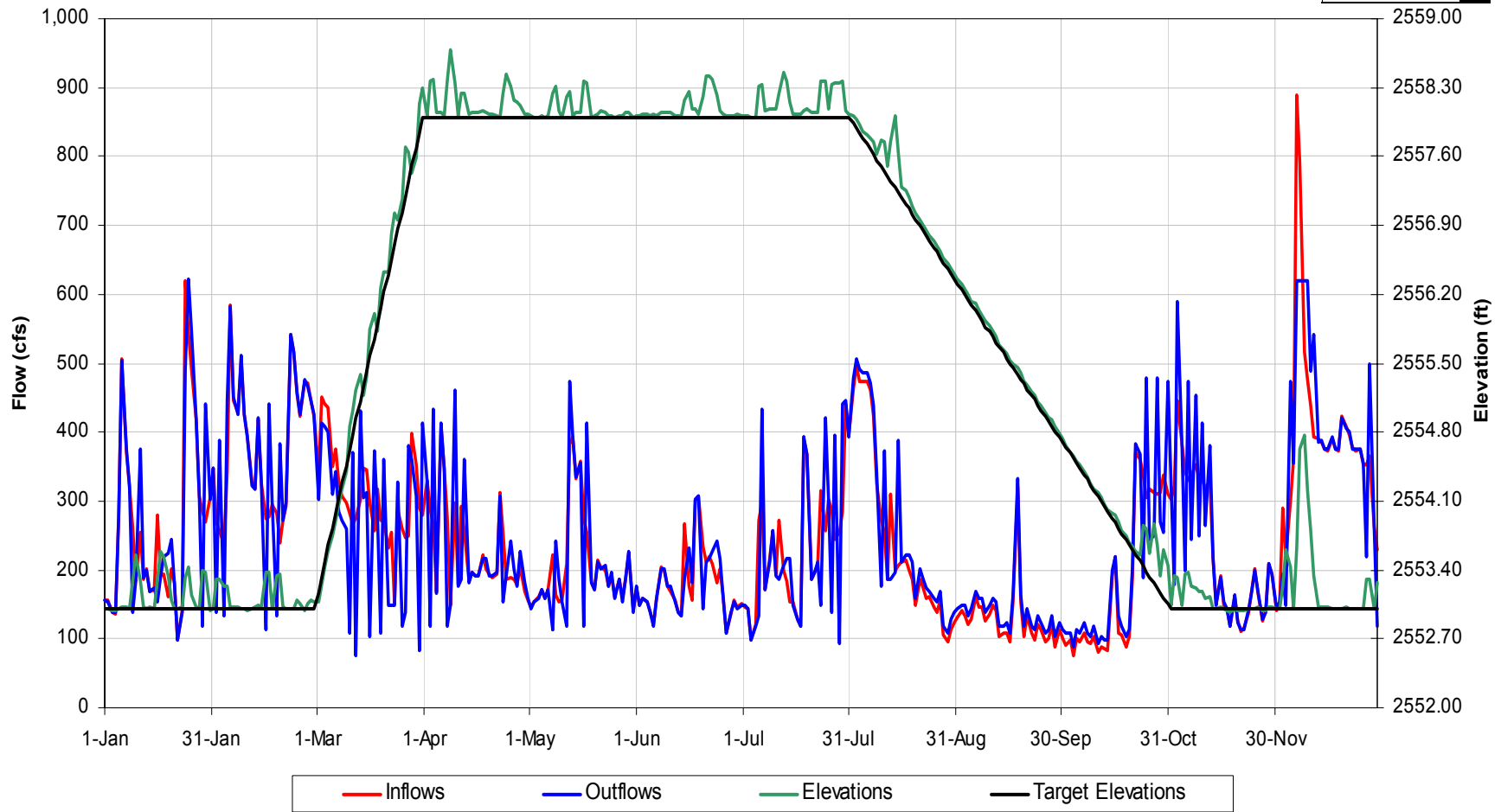
Bear Creek - Scenario 4

(Normal 1971)



Bear Creek Reservoir Operational Details
for 1971 Hydrology, Scenario 'Scn 4 Ncwr Rc'

Change Year



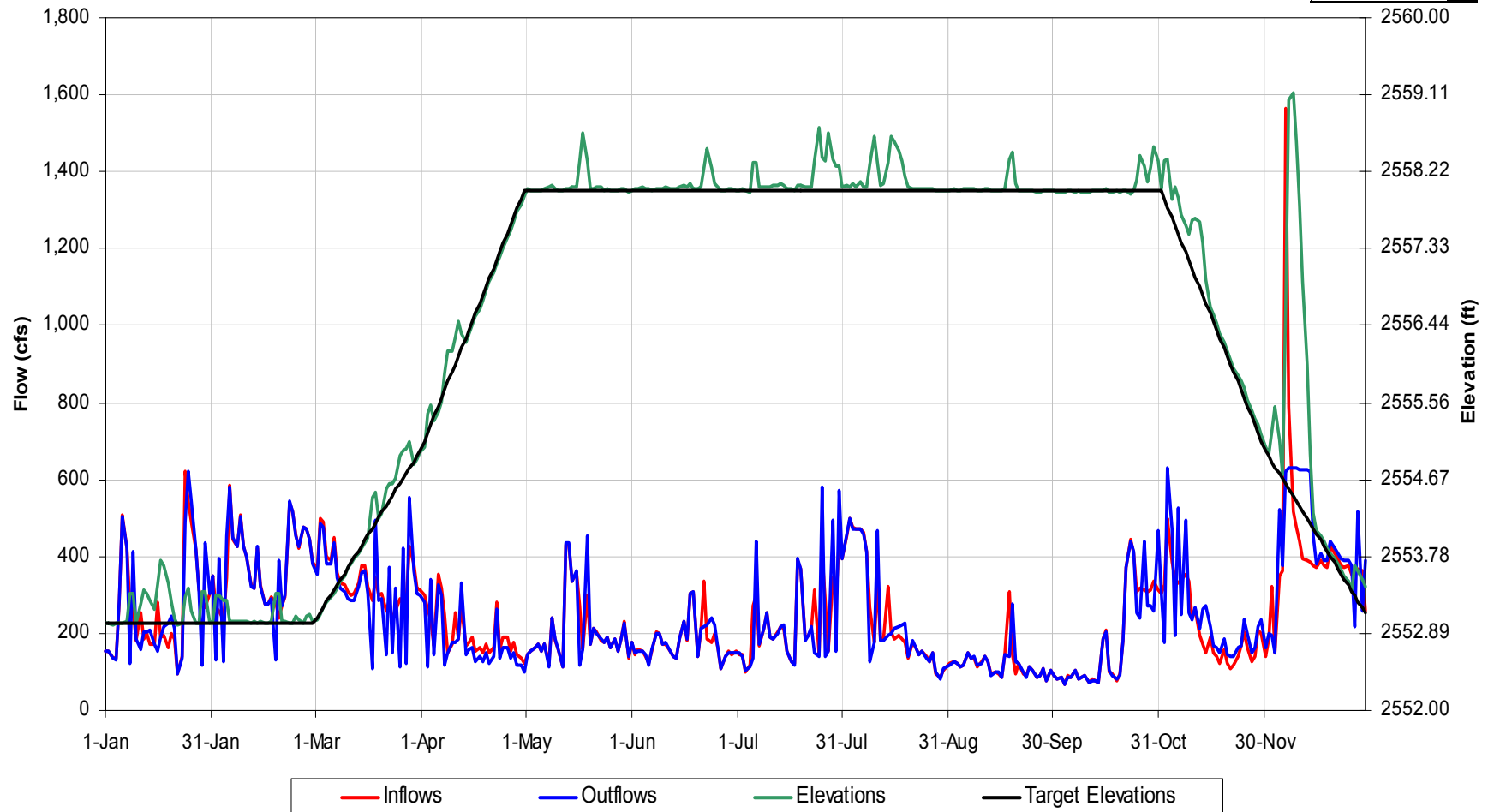
Bear Creek - Scenario 5

(Normal 1971)



Bear Creek Reservoir Operational Details
for 1971 Hydrology, Scenario 'Scn 5 Rec Flows_'

Change Year



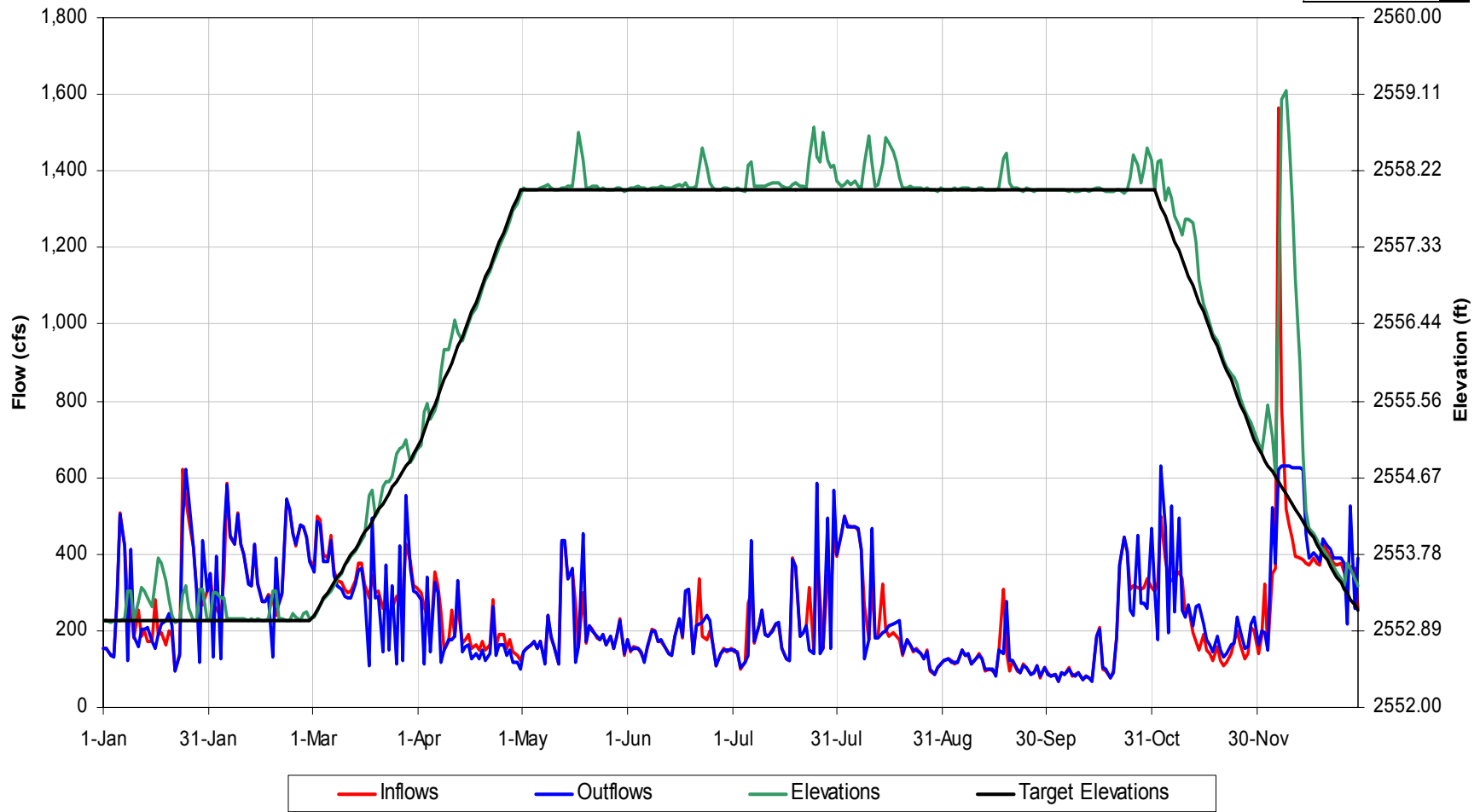
Bear Creek - Scenario 5A

(Normal 1971)



Bear Creek Reservoir Operational Details
for 1971 Hydrology, Scenario 'Scn 5a 2xrec Flows'

Change Year



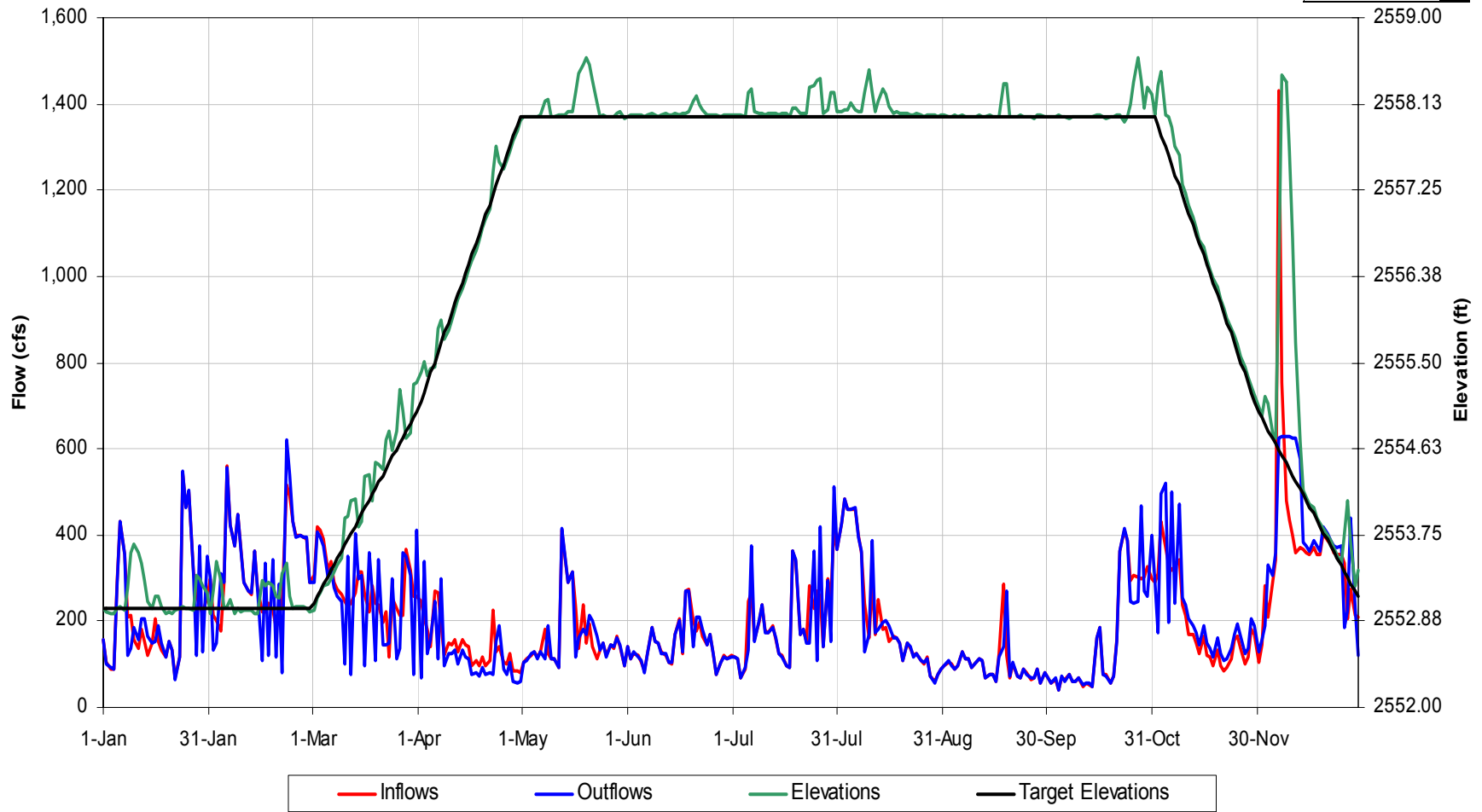
Bear Creek - Scenario 6

(Normal 1971)



Bear Creek Reservoir Operational Details
for 1971 Hydrology, Scenario 'Scn 6 Bpf'

Change Year



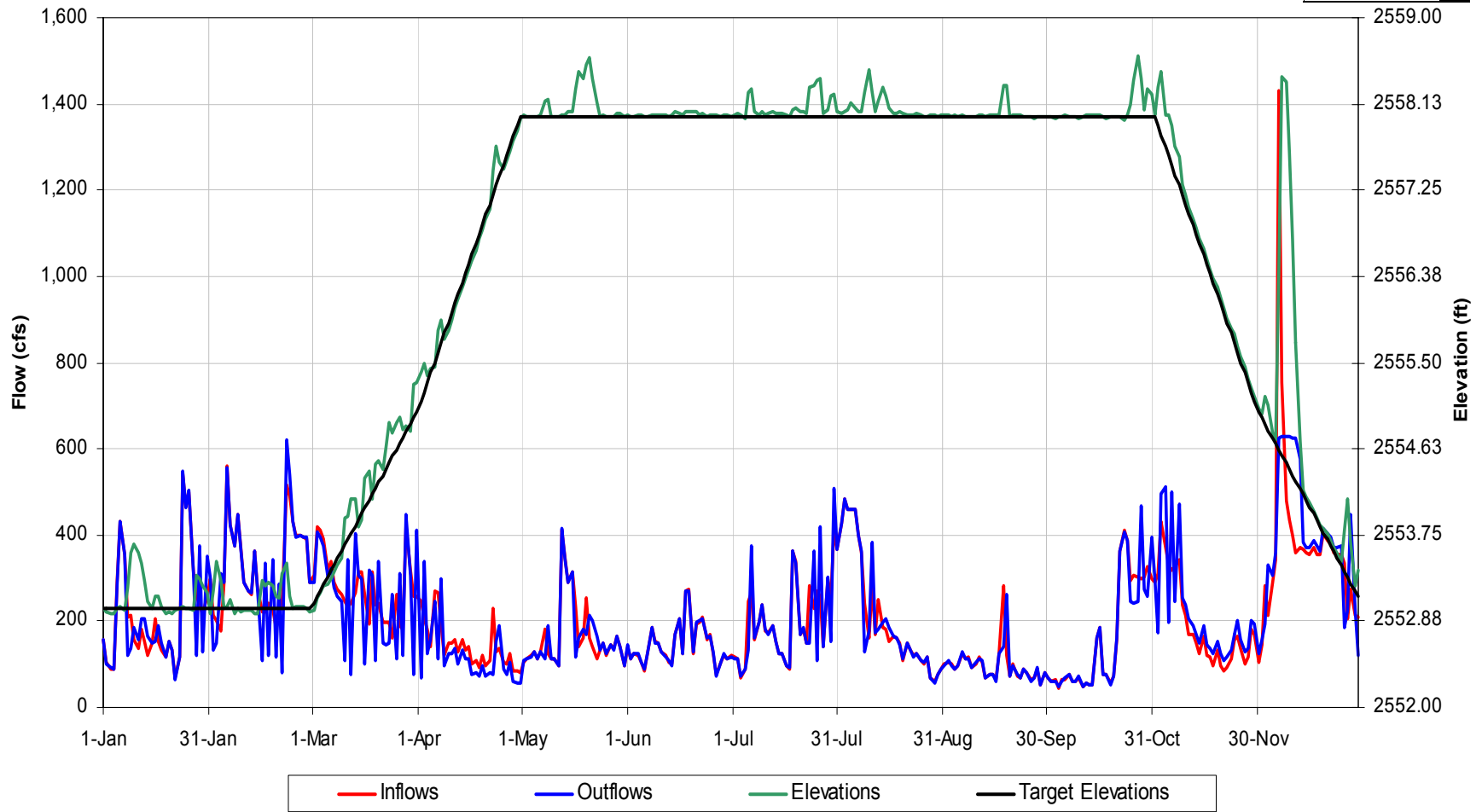
Bear Creek - Scenario 7

(Normal 1971)



Bear Creek Reservoir Operational Details
for 1971 Hydrology, Scenario 'Scn7 Bpf_'

Change Year



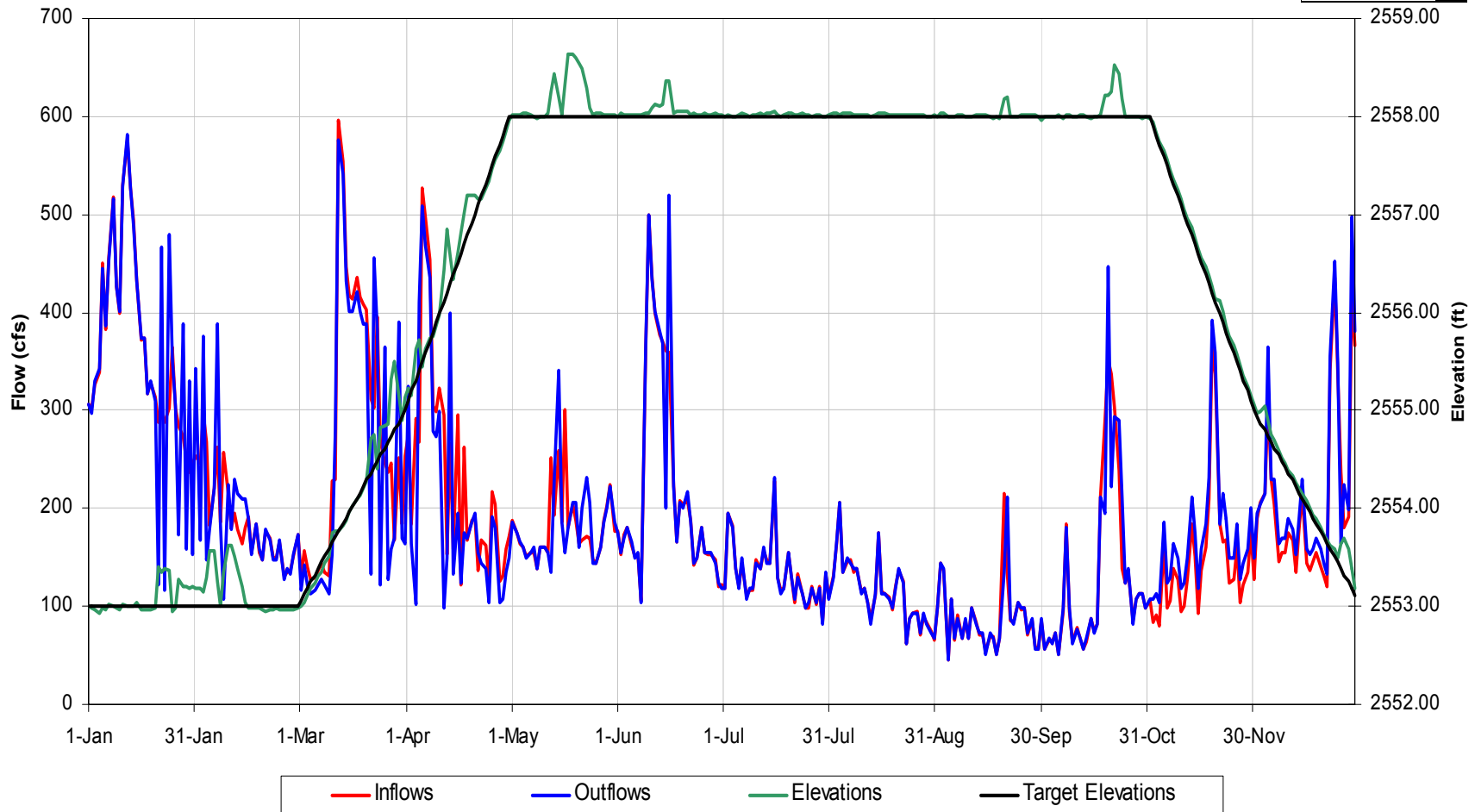
Bear Creek - Base Case

(Dry 1968)



Bear Creek Reservoir Operational Details
for 1968 Hydrology, Scenario 'Base Case'

Change Year



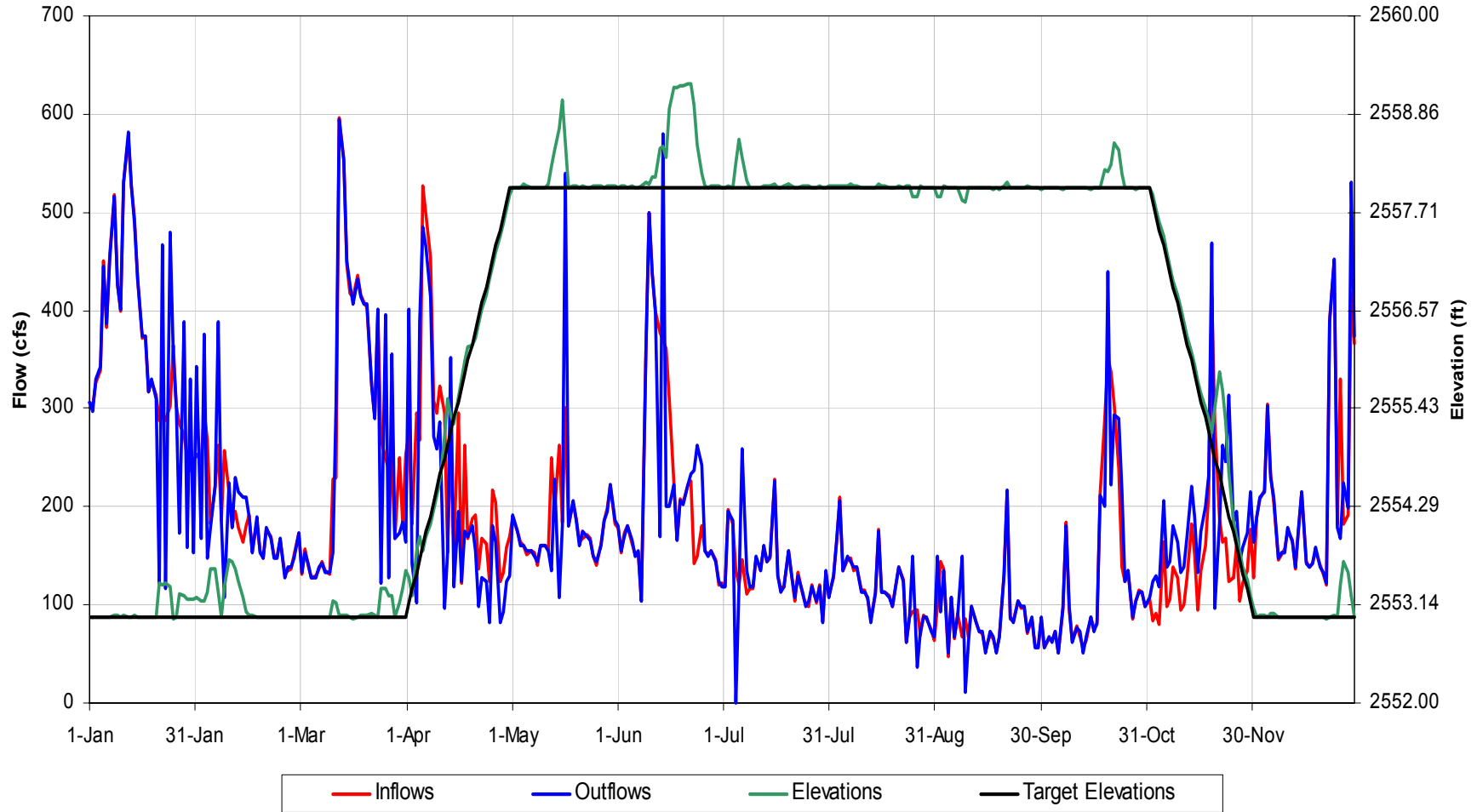
Bear Creek - Scenario 2

(Dry 1968)



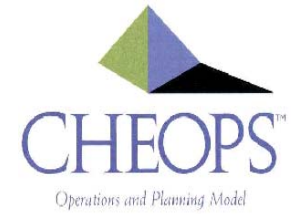
Bear Creek Reservoir Operational Details
for 1968 Hydrology, Scenario 'Scn 2 Duke Tb'

Change Year



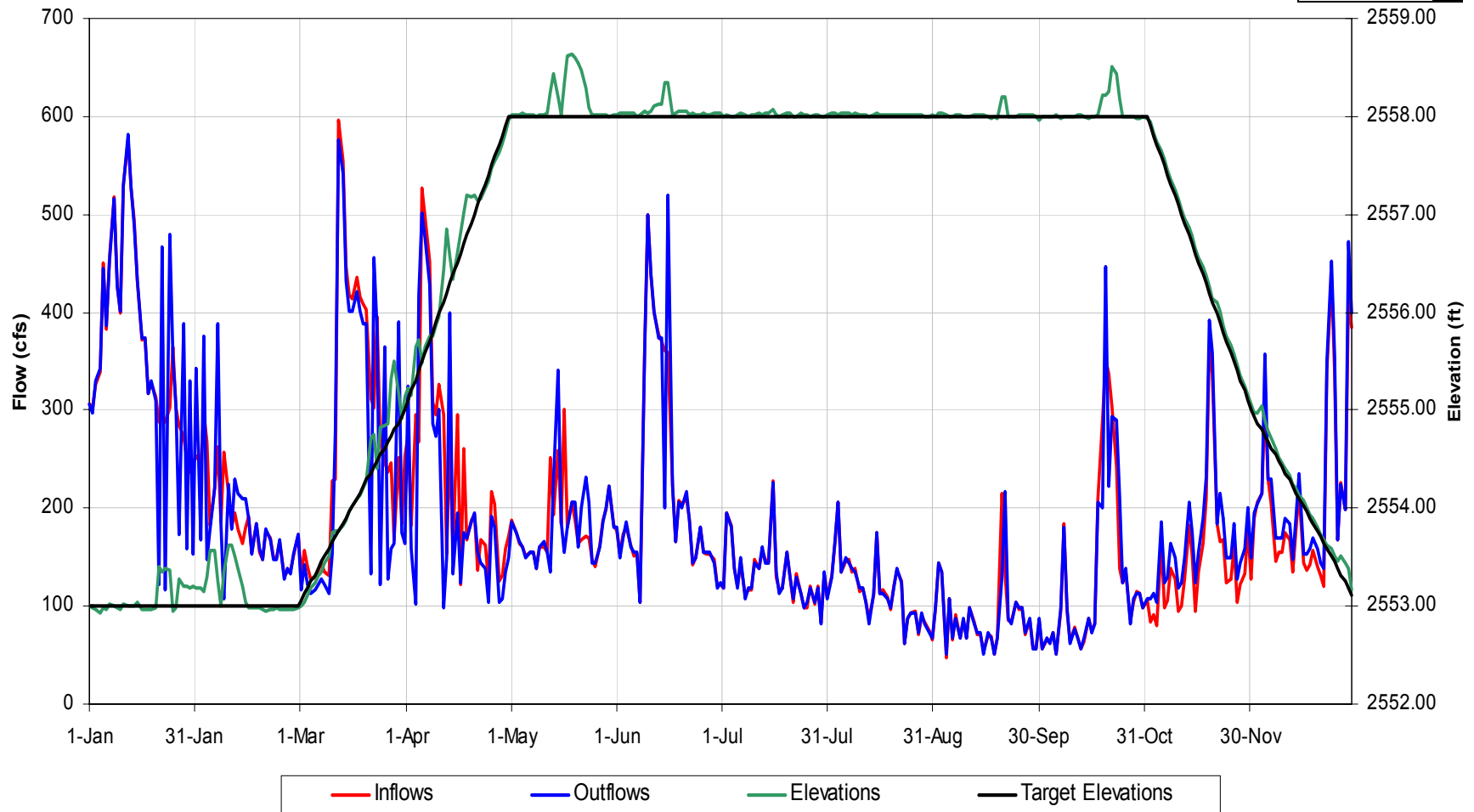
Bear Creek - Scenario 3

(Dry 1968)



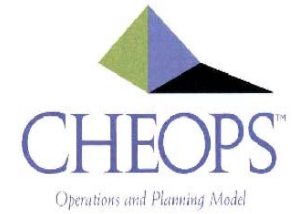
Bear Creek Reservoir Operational Details
for 1968 Hydrology, Scenario 'Scn 3 Lk Glvl Hoa Rc'

Change Year



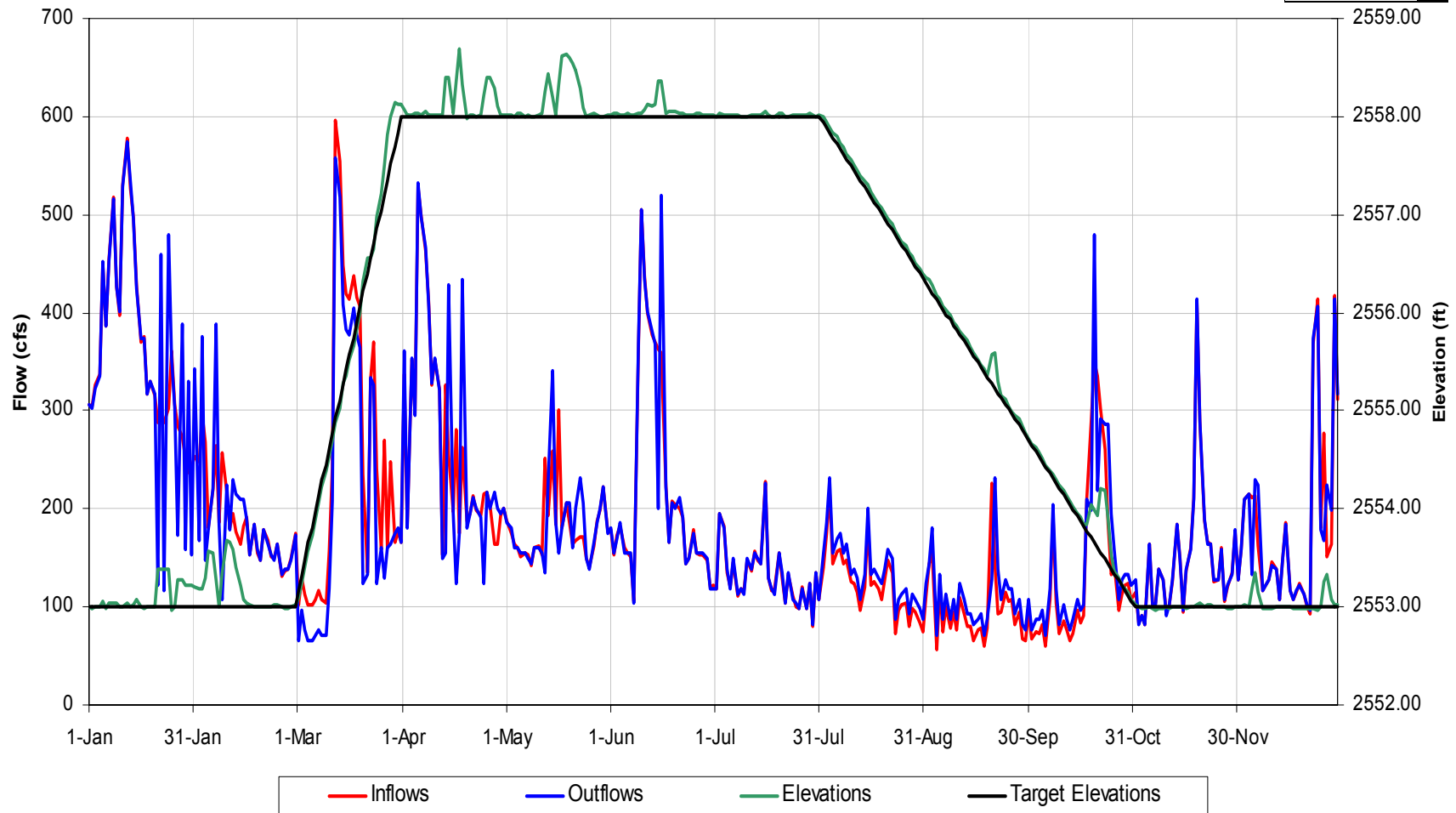
Bear Creek - Scenario 4

(Dry 1968)



Bear Creek Reservoir Operational Details
for 1968 Hydrology, Scenario 'Scn 4 Ncwr Rc'

Change Year



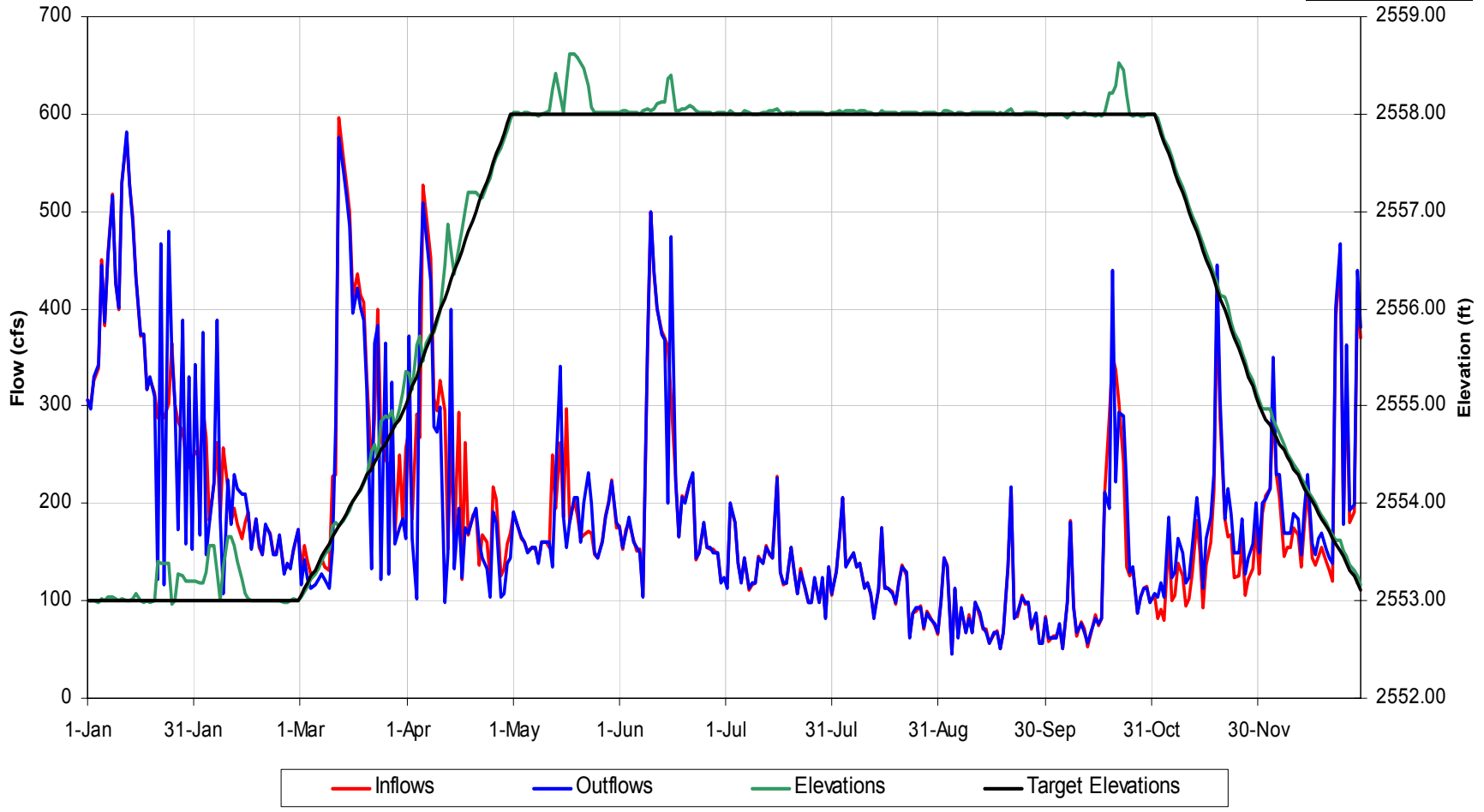
Bear Creek - Scenario 5

(Dry 1968)



Bear Creek Reservoir Operational Details
for 1968 Hydrology, Scenario 'Scn 5 Rec Flows_'

Change Year

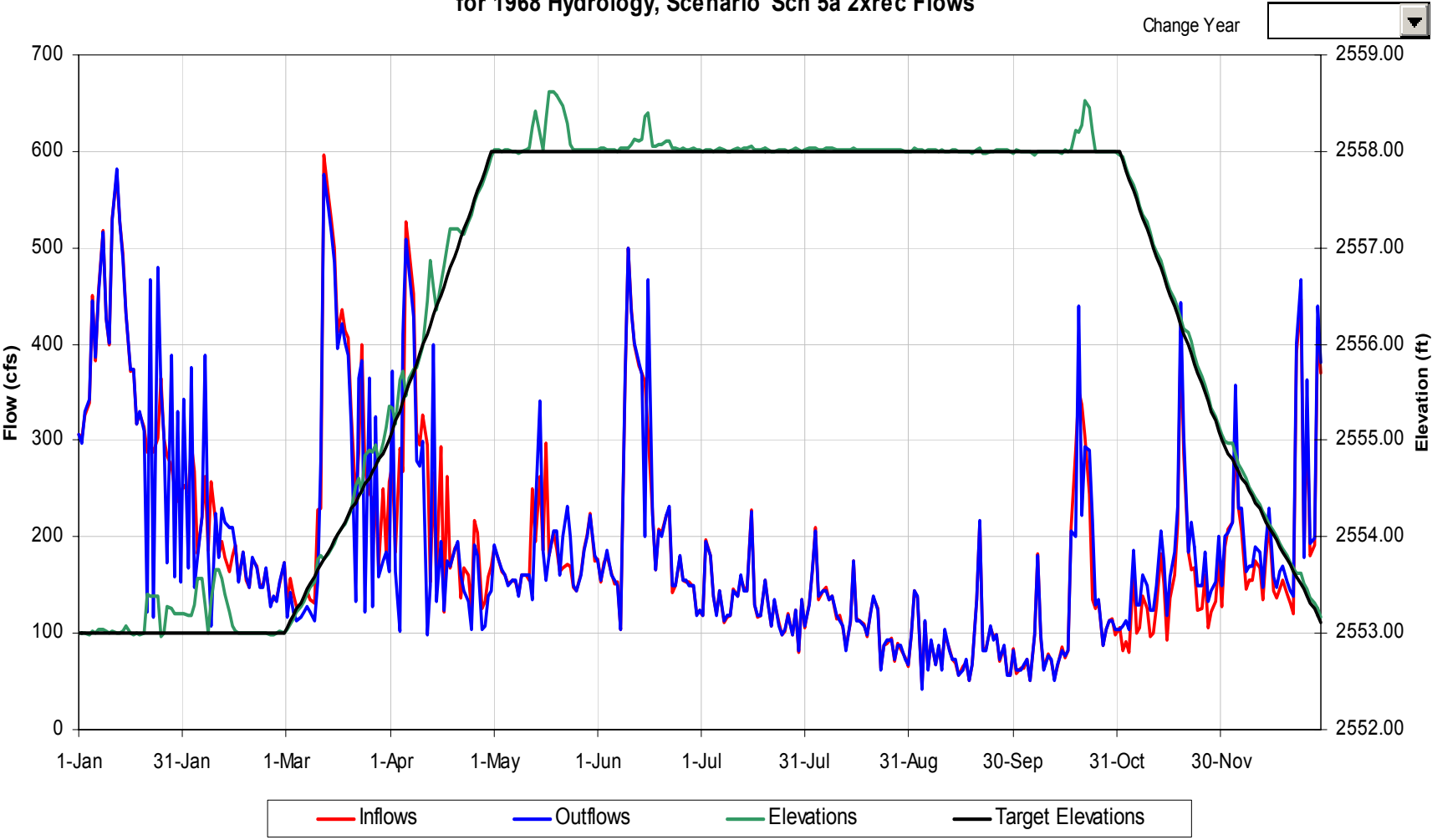


Bear Creek - Scenario 5A

(Dry 1968)



Bear Creek Reservoir Operational Details
for 1968 Hydrology, Scenario 'Scn 5a 2xrec Flows'



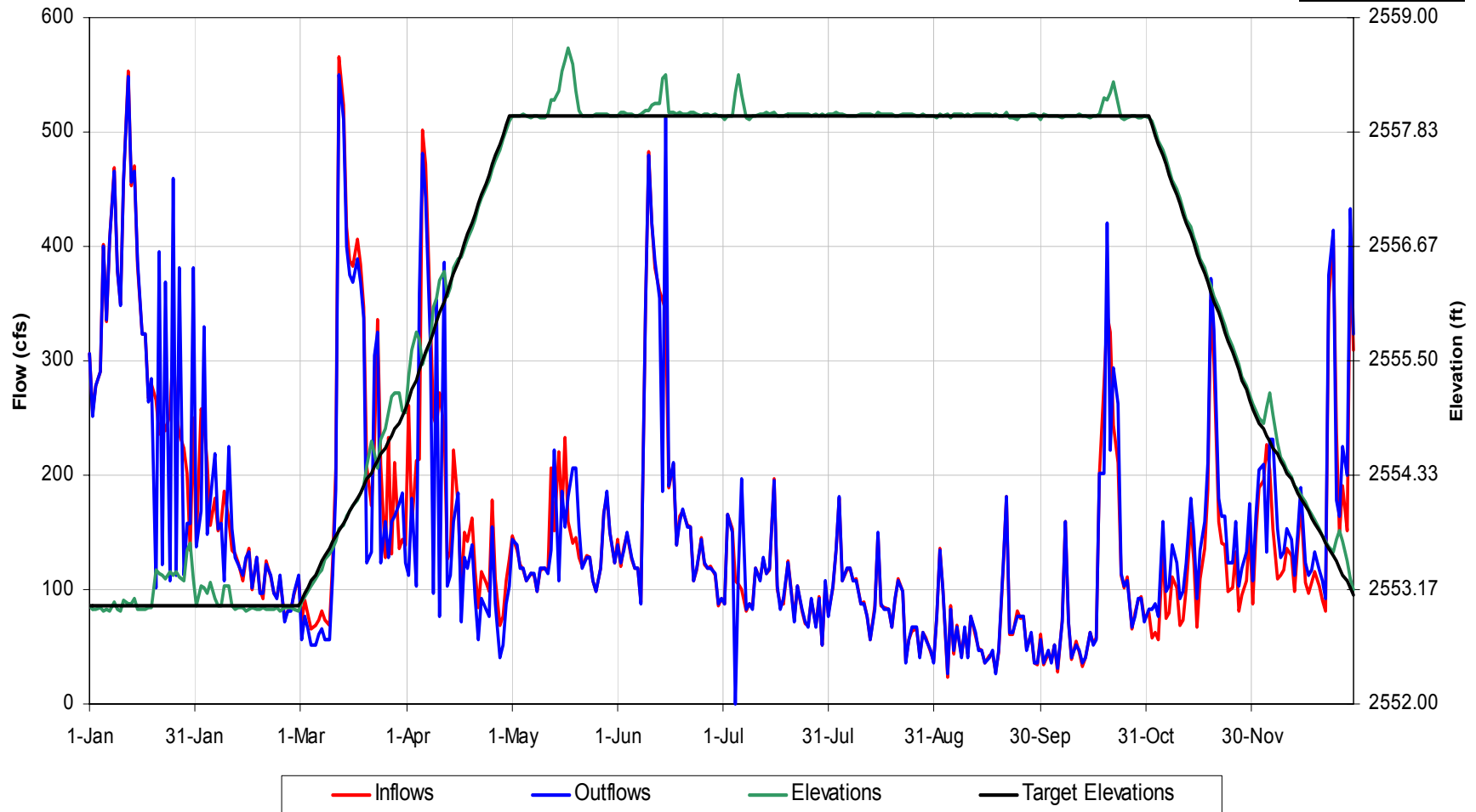
Bear Creek - Scenario 6

(Dry 1968)



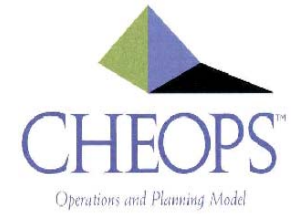
Bear Creek Reservoir Operational Details
for 1968 Hydrology, Scenario 'Scn 6 Bpf'

Change Year



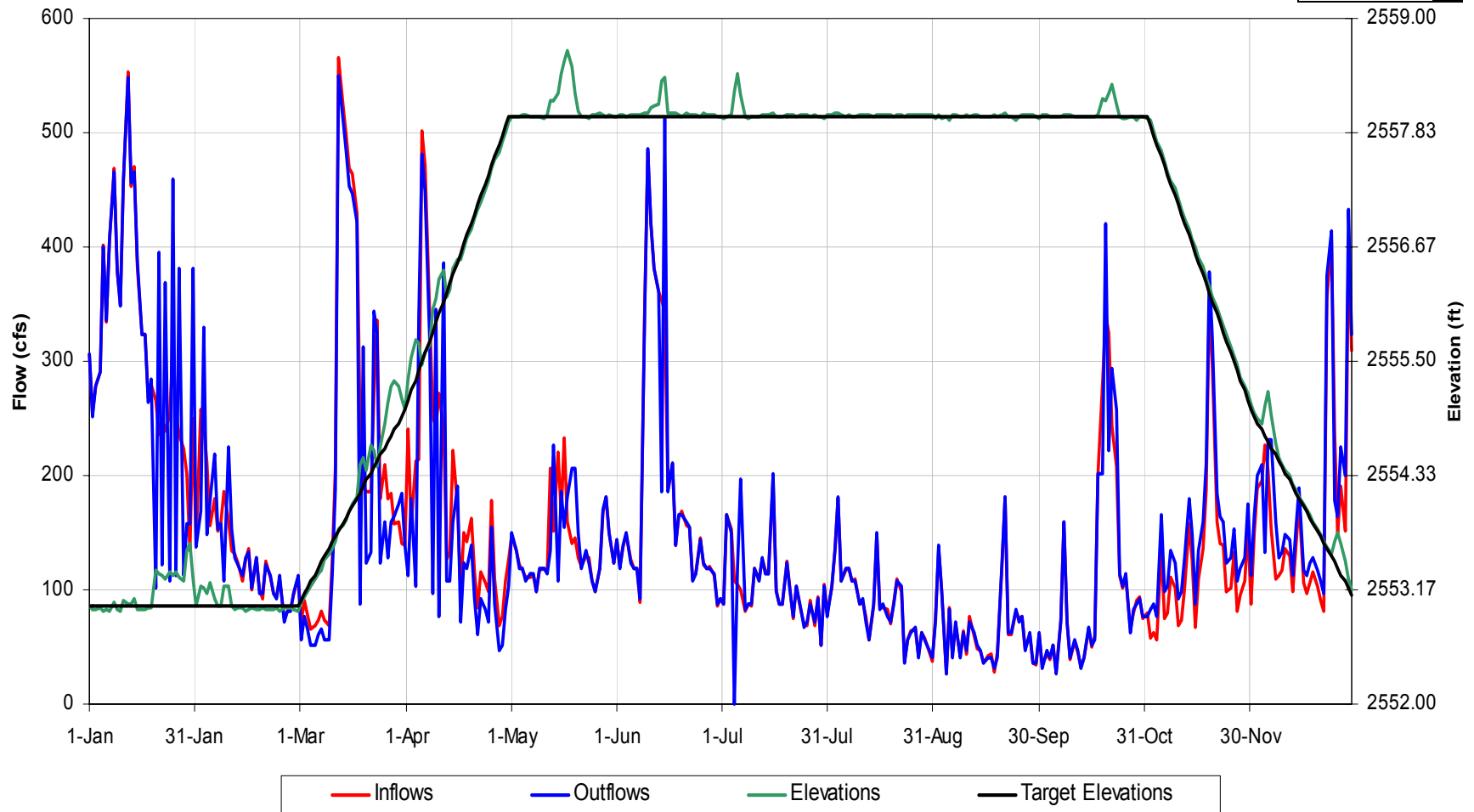
Bear Creek - Scenario 7

(Dry 1968)



Bear Creek Reservoir Operational Details
for 1968 Hydrology, Scenario 'Scn7 Bpf_'

Change Year



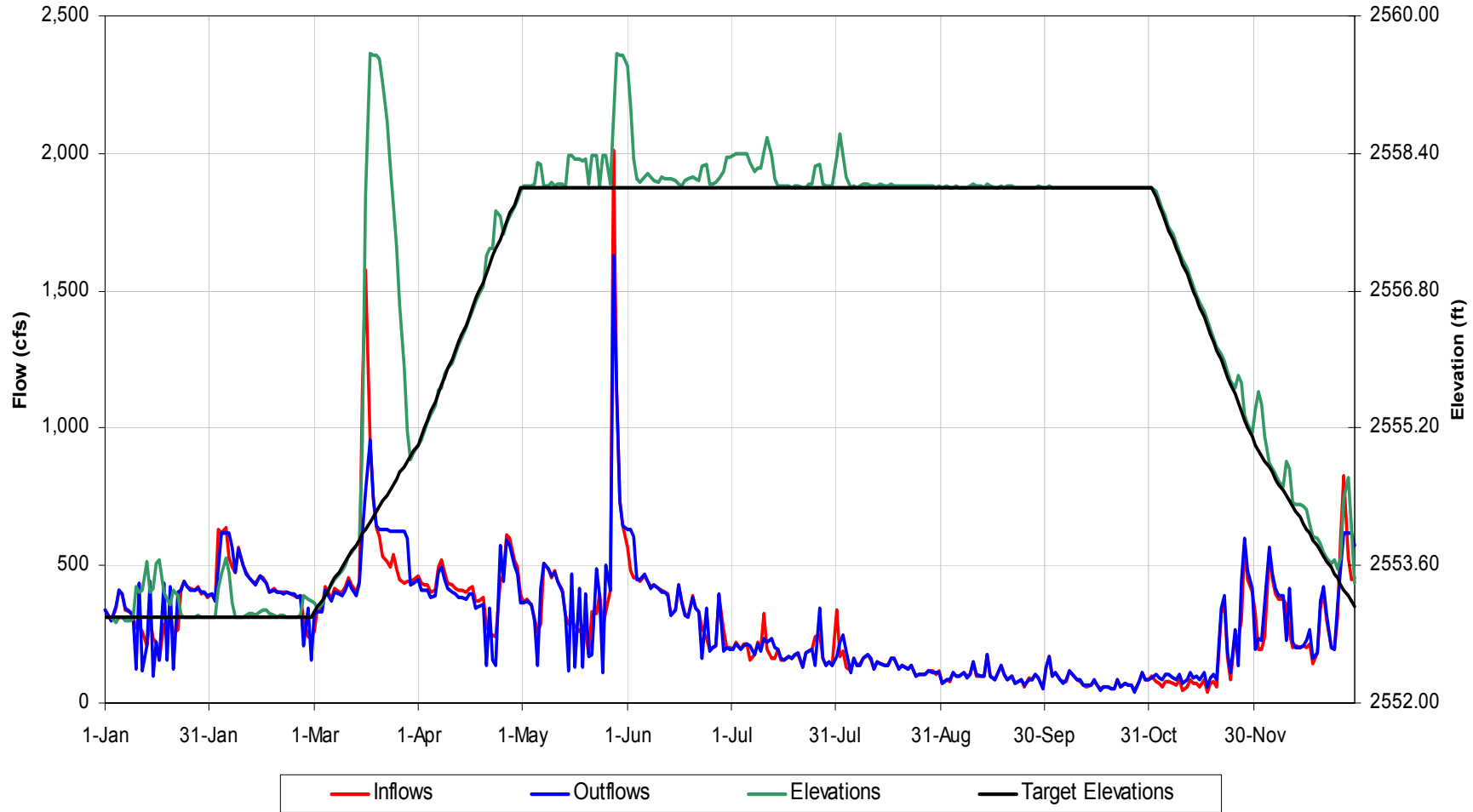
Bear Creek - Base Case

(Wet 1973)



Bear Creek Reservoir Operational Details
for 1973 Hydrology, Scenario 'Base Case'

Change Year



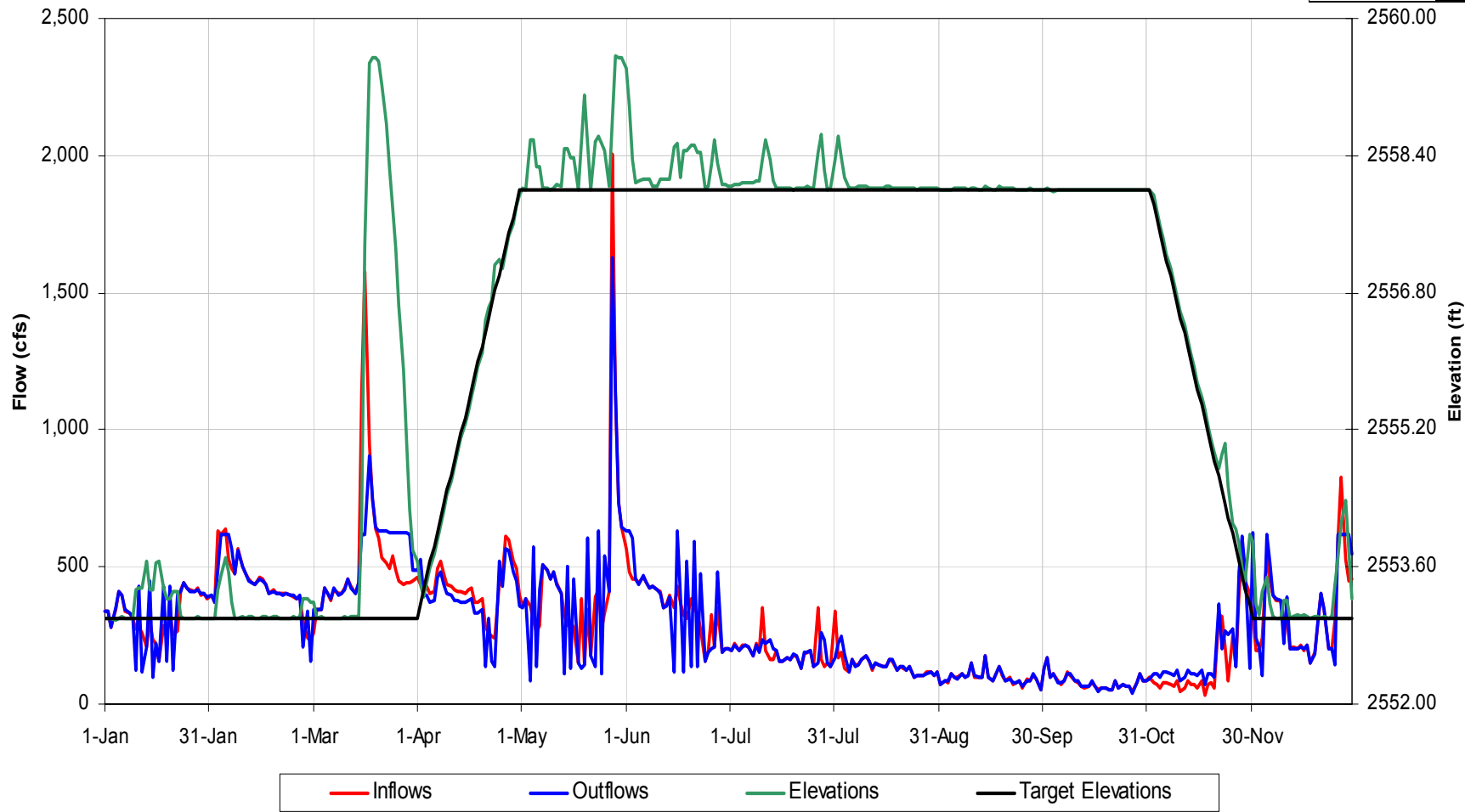
Bear Creek - Scenario 2

(Wet 1973)



Bear Creek Reservoir Operational Details
for 1973 Hydrology, Scenario 'Scn 2 Duke Tb'

Change Year



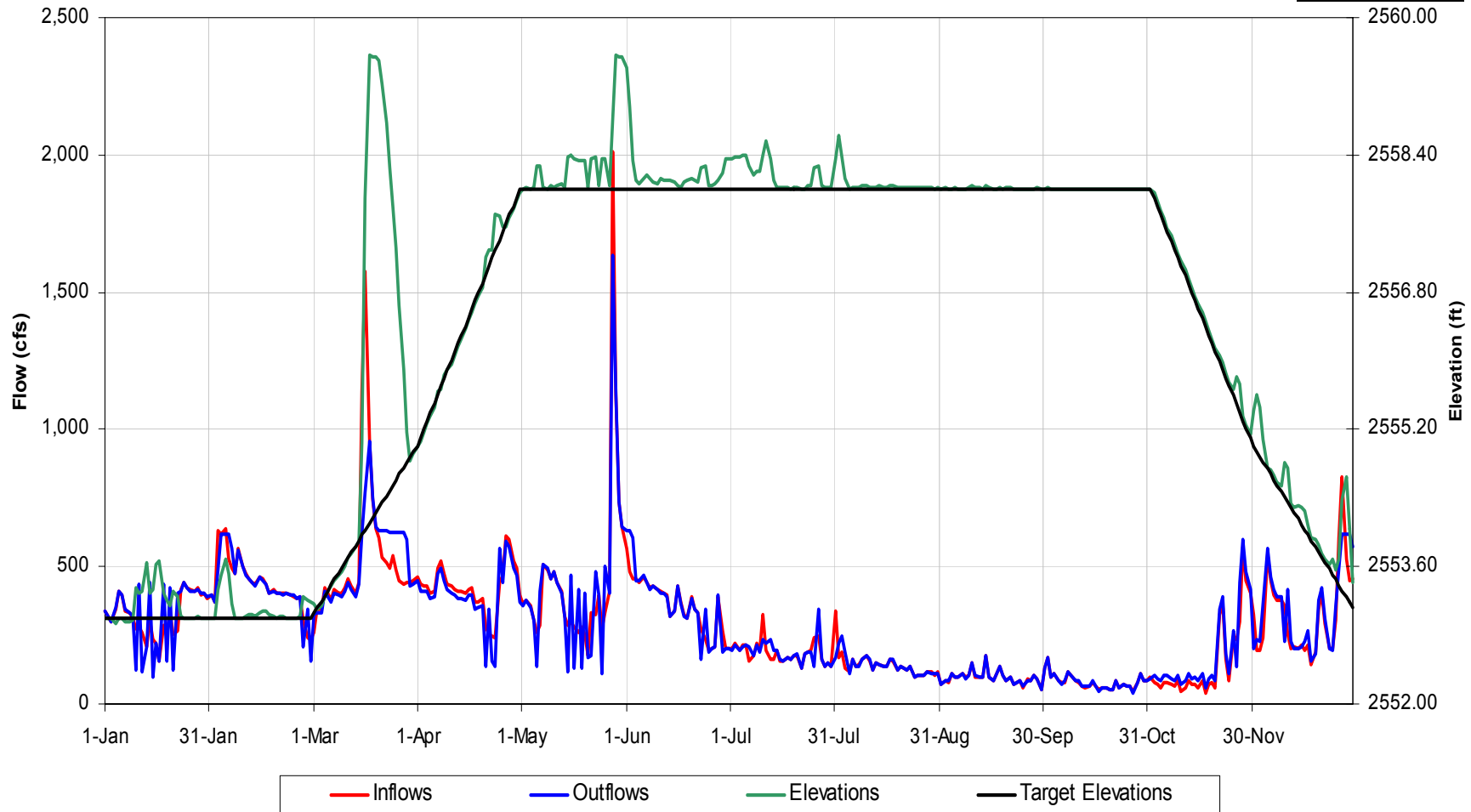
Bear Creek - Scenario 3

(Wet 1973)



Bear Creek Reservoir Operational Details
for 1973 Hydrology, Scenario 'Scn 3 Lk Glvl Hoa Rc'

Change Year



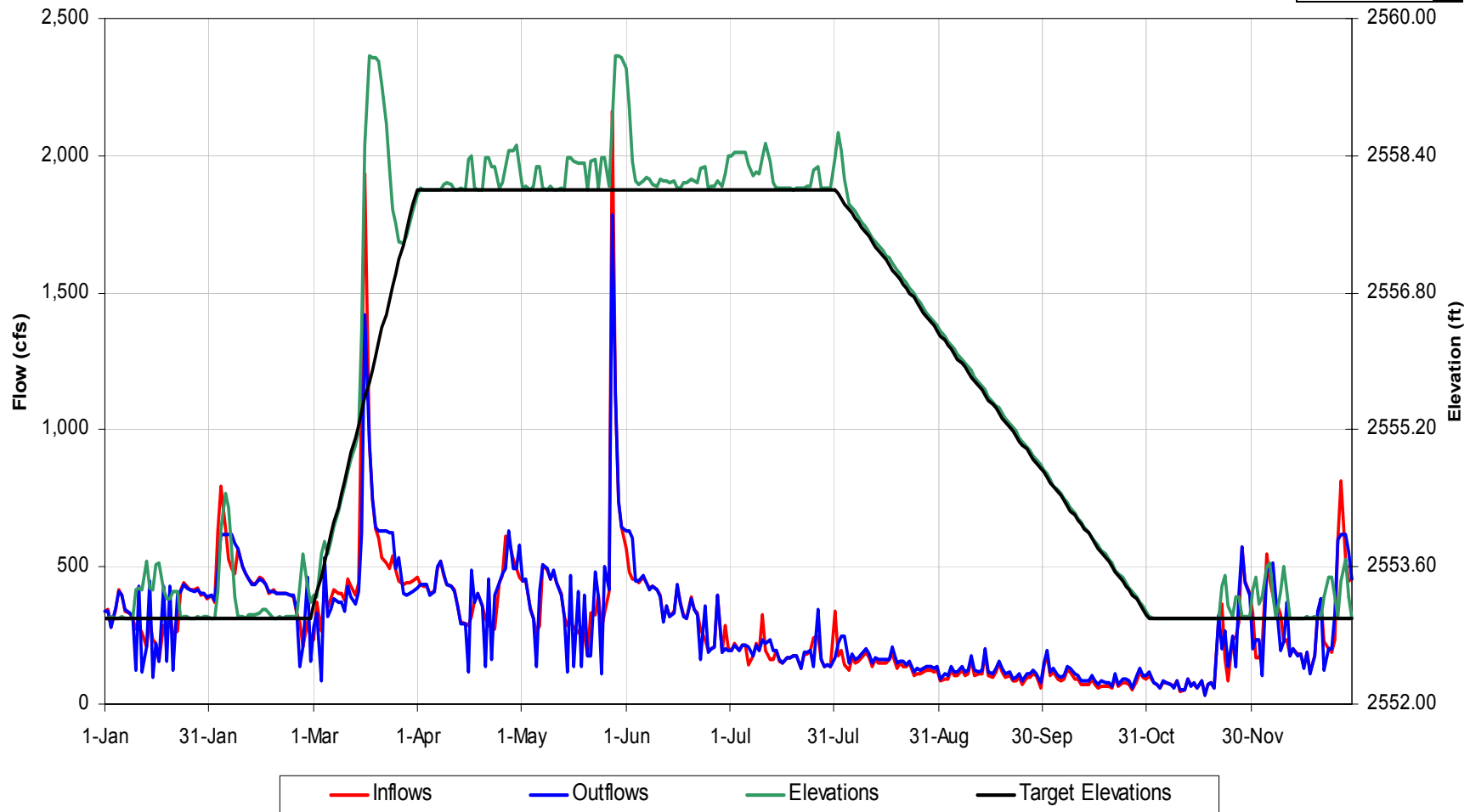
Bear Creek - Scenario 4

(Wet 1973)



Bear Creek Reservoir Operational Details
for 1973 Hydrology, Scenario 'Scn 4 Ncwr Rc'

Change Year



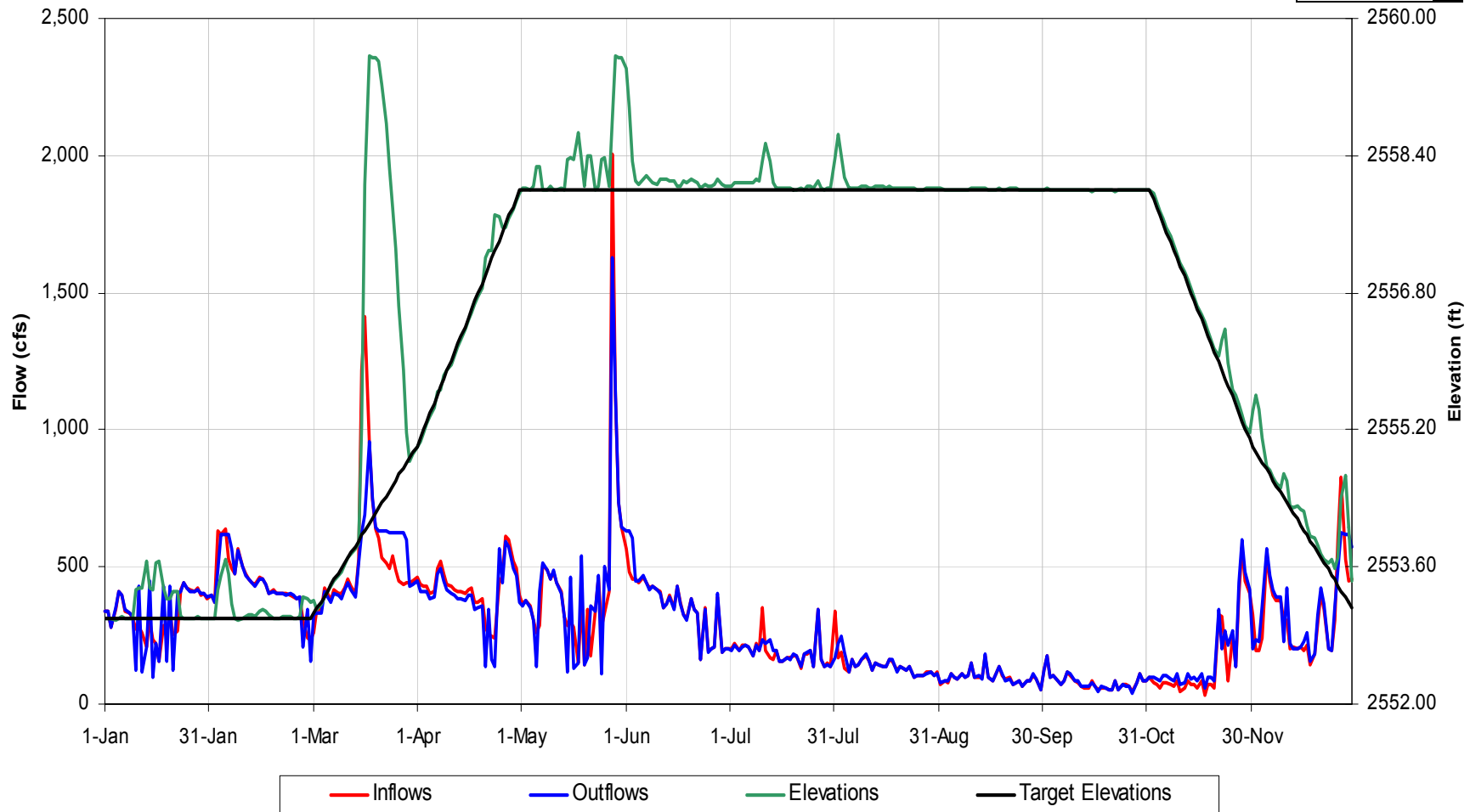
Bear Creek - Scenario 5

(Wet 1973)



Bear Creek Reservoir Operational Details
for 1973 Hydrology, Scenario 'Scn 5 Rec Flows_'

Change Year

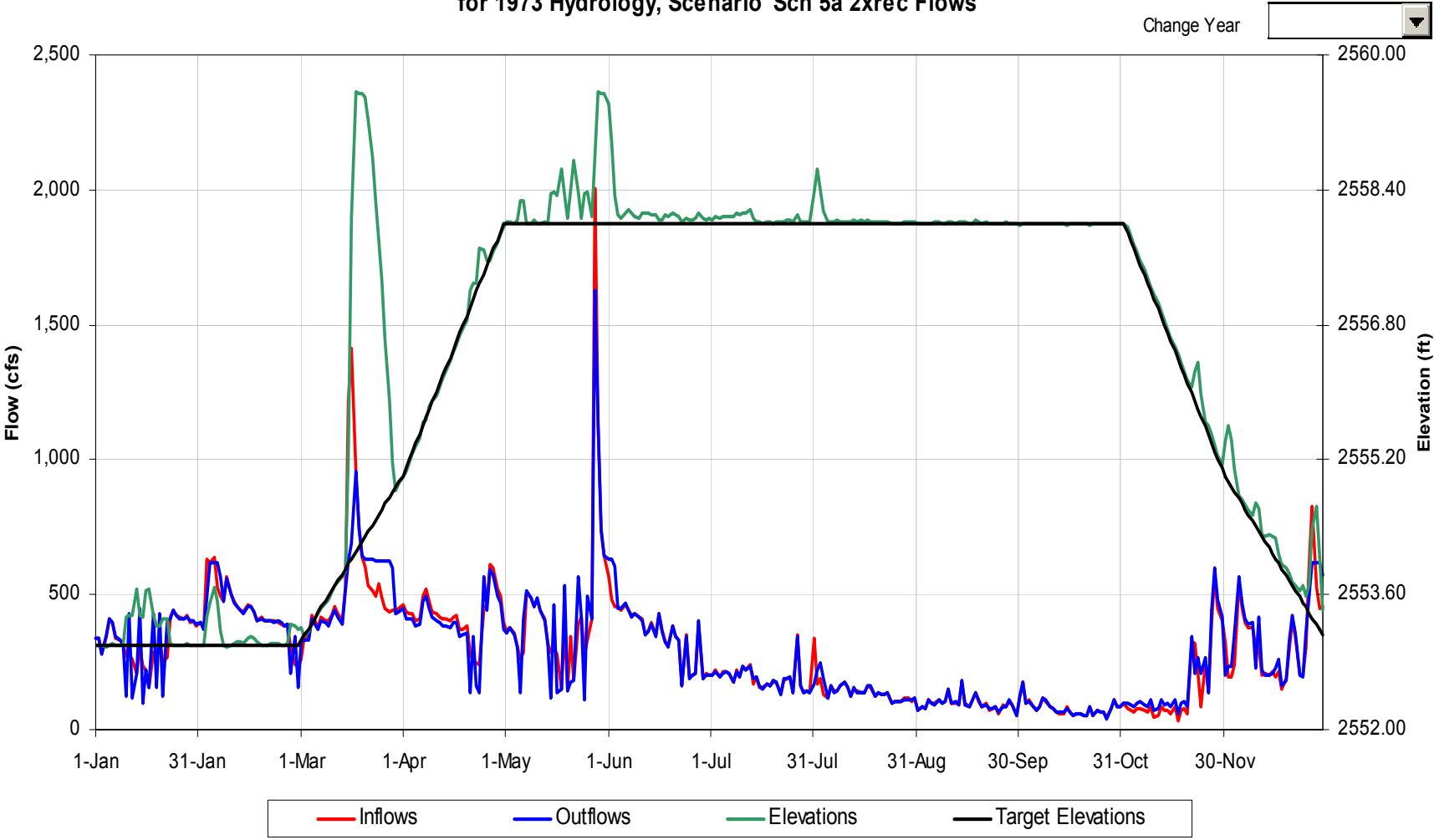


Bear Creek - Scenario 5A

(Wet 1973)



Bear Creek Reservoir Operational Details
for 1973 Hydrology, Scenario 'Scn 5a 2xrec Flows'



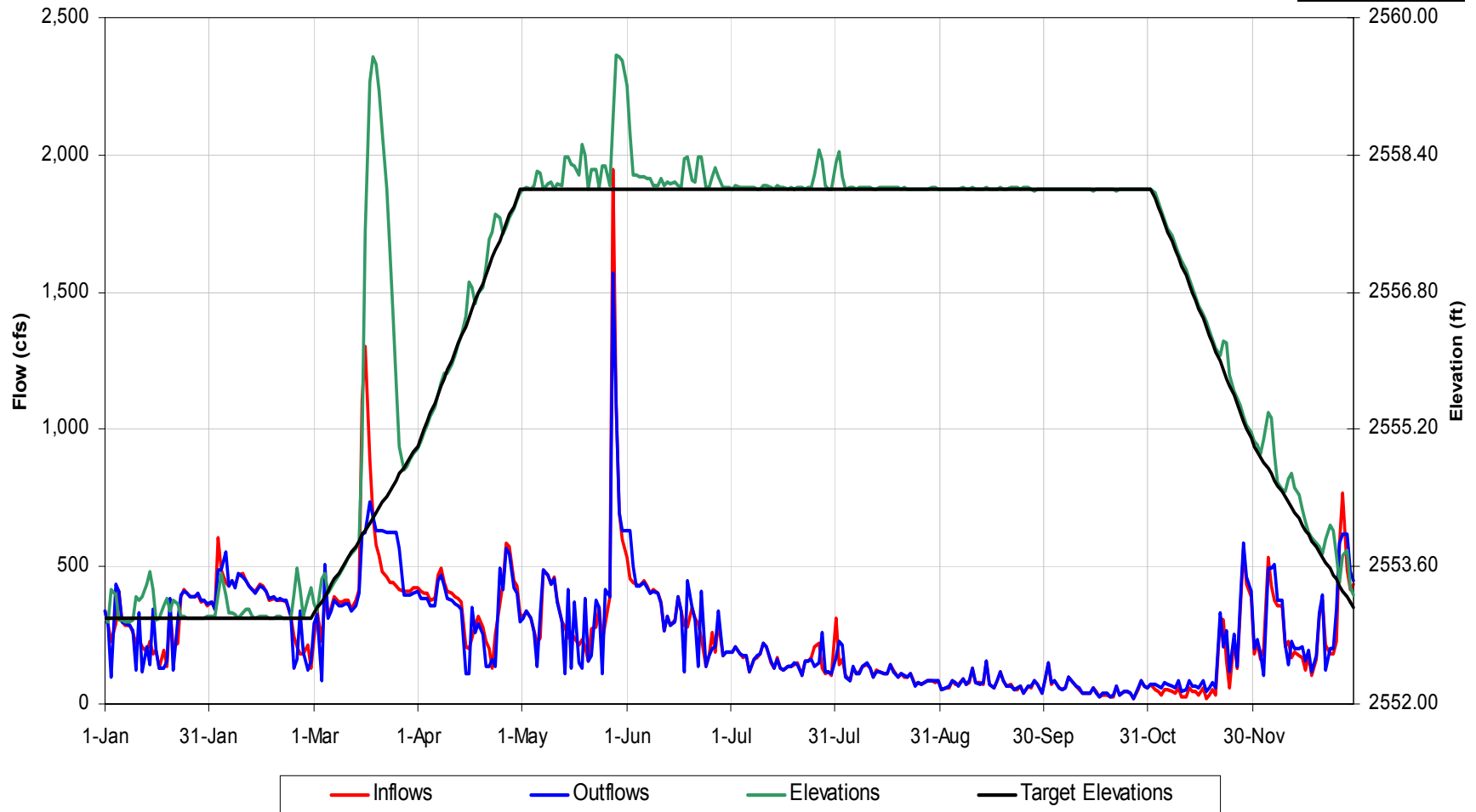
Bear Creek - Scenario 6

(Wet 1973)



Bear Creek Reservoir Operational Details
for 1973 Hydrology, Scenario 'Scn 6 Bpf'

Change Year



Bear Creek - Scenario 7

(Wet 1973)



Bear Creek Reservoir Operational Details
for 1973 Hydrology, Scenario 'Scn7 Bpf_'

Change Year

