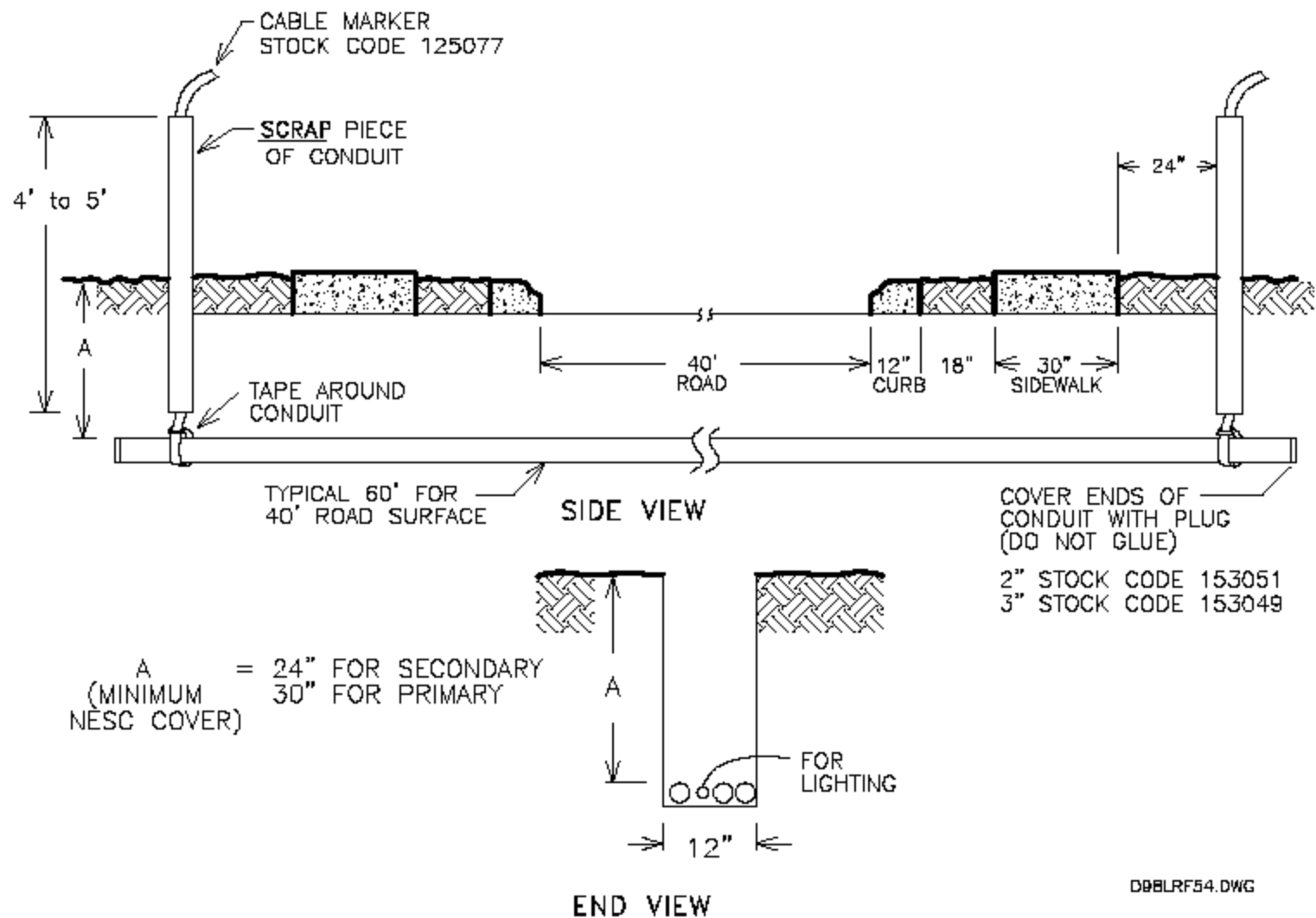


10.6 CONDUIT UNDER ROAD – DETAIL



D9BLRF54.DWG

Figure 10-5
Conduit Under Road - Detail

NOTES:

- 1) A backhoe should be used to prevent cable damage by the conduit versus a trencher.
- 2) Tamp for appropriate compaction under future road.
- 3) Cable Markers to be removed when cable is installed.
- 4) Conduit for services should be 3". Lighting conduit to be 2".
- 5) When installing cable under existing major streets or highways, boring or tunneling should be used. Local or State Highway authorities should be contacted for approval.