

Questions? Be safe, not sorry.

800-521-2232

Duke Energy looks forward to providing you with reliable and efficient electrical service. This brochure shows the details of meter base wiring for overhead and underground single phase, 12/240 volt installation. The maximum service size for the installations is 200 amperes.

The illustration inside shows the items you are responsible for supplying and/or installing. If you have questions about any of these specifications or if your installation differs from the one shown here, please contact Duke Energy at 800-521-2232 to apply for service. We will be happy to explain these requirements to you or suggest other sources of help.

To schedule installation of electrical service, please refer to our Checklist For Service Installation. If you do not have a copy of this checklist, please ask for one when you call. We look forward to serving you!

Issuance of this brochure does not release the customer from responsibility to install, operate and maintain facilities in an approved and safe manner, nor does Duke Energy assume any duty to inspect such facilities or to otherwise determine their adequacy or condition.

Duke Energy may revise, without notice, the requirements outlined in this brochure. The customer is obligated to maintain their facilities in accordance with all applicable revised Duke Energy requirements.

All wiring installations must meet the requirements of the National Electrical Code, the National Electrical Safety Code, local codes and ordinances, and inspection authorities, as well as the terms and conditions of electric service of Duke Energy as approved by the Indiana Utility Regulatory Commission.

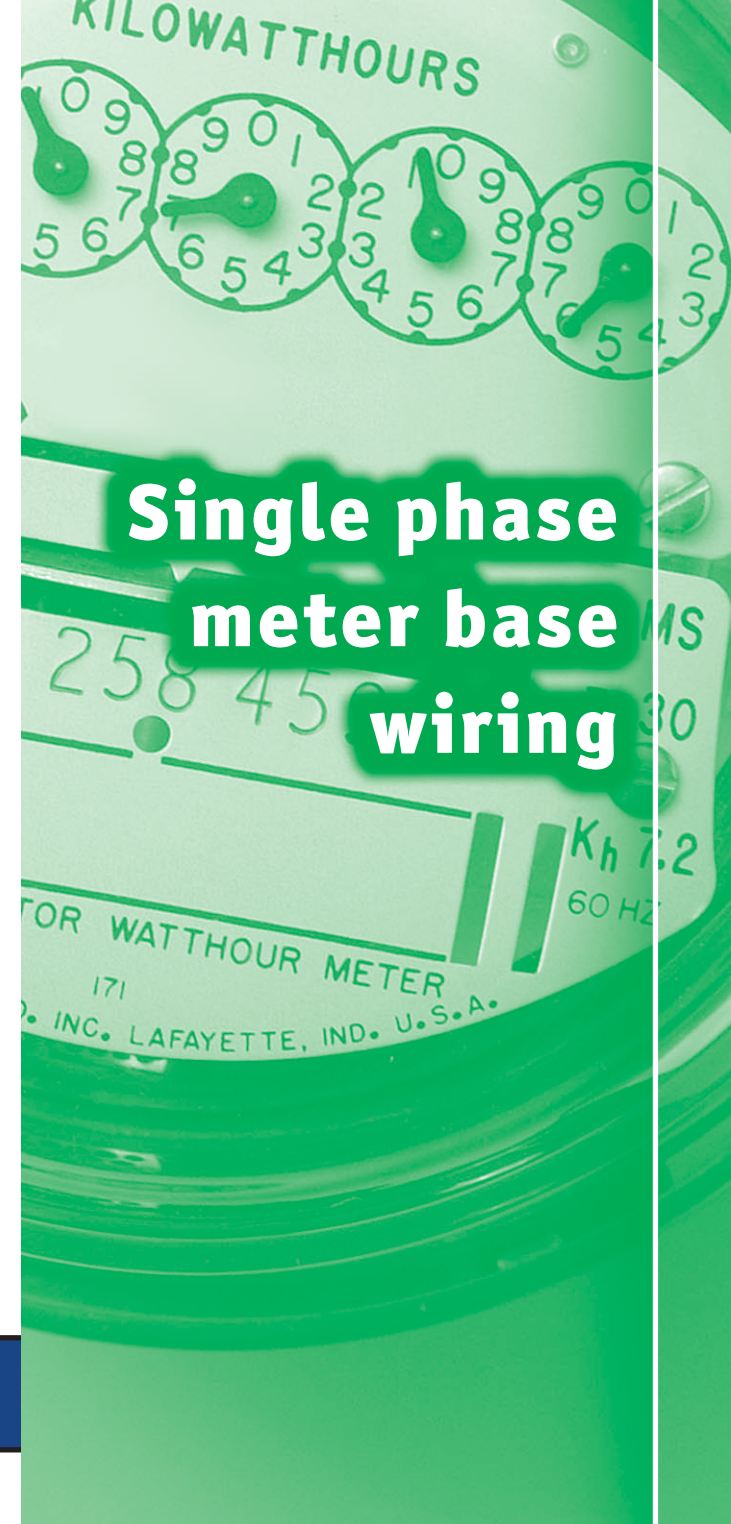
Equipment and wiring must not present a hazard to Duke Energy personnel, the customer or the general public.

Use of electric energy must not cause unreasonable voltage variations on the Duke Energy lines or disturbances to the service of other customers.

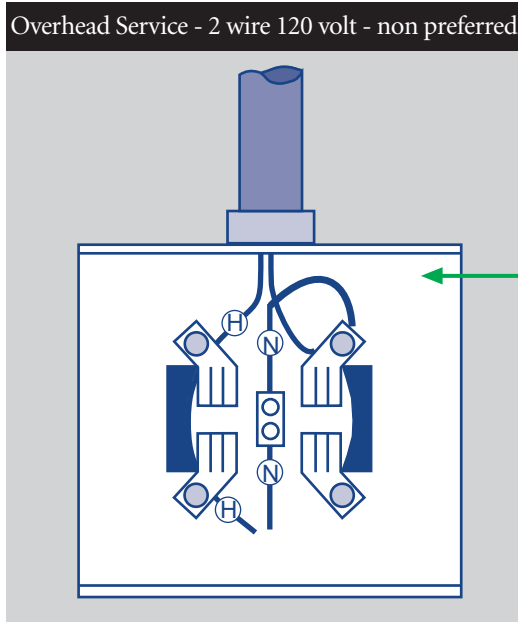
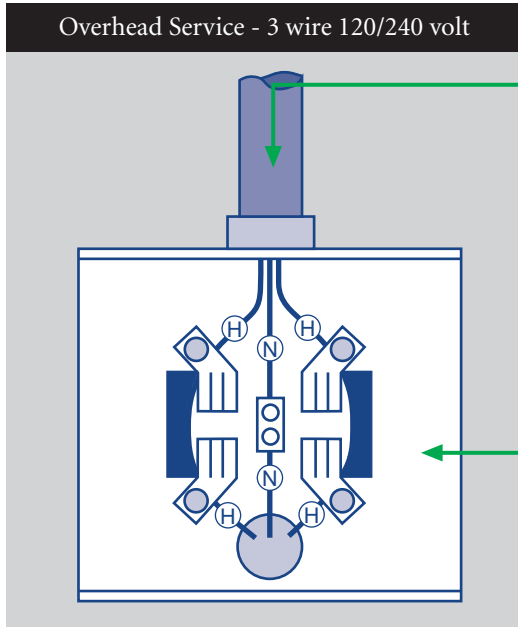
The decisions of local inspection authorities will override the information in this brochure concerning customer equipment. This does not include the location of the meter base.

Ownership of facilities shall remain with the party which supplied the facilities regardless of the party responsible for installation, except as otherwise agreed upon and indicated in writing and onfile with Duke Energy. Maintenance of such facilities shall be the responsibility of the owner.

**Stay away from power lines.**



# Single phase panels from a single meter base

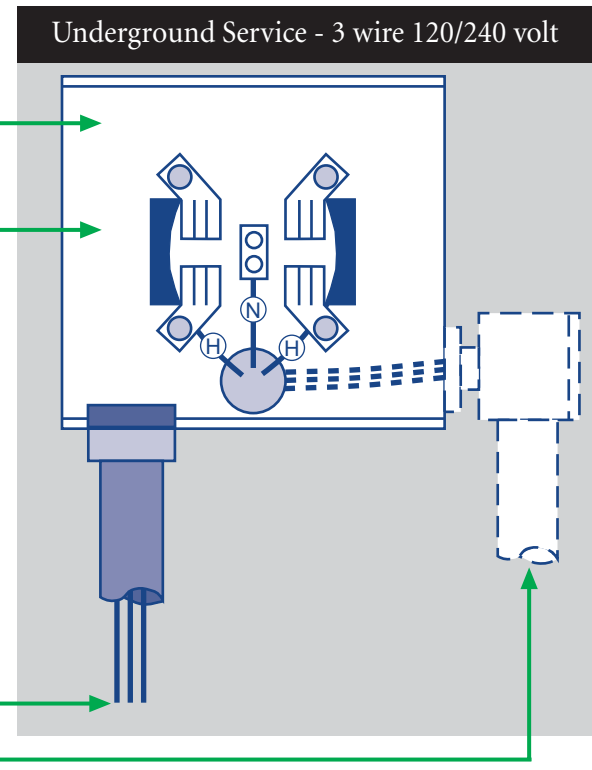


- Ⓜ Hot wires
- Ⓝ Neutral Wires
- Items you supply and install
- Items Duke Energy supplies and installs

Breaker Size	Customer Wire Sizes					
	Ⓜ Minimum Line Conductor		Ⓝ Neutral Conductor		Ground Wire	
	Alum.	Copper	Alum.	Copper	Alum.	Copper
100 AMP	#2	#4	#6	#8 - #4	#6	#8 - #4
200 AMP	#4/0	#2/0	#2 - #2/0	#4 - #1	#2	#6 - #4

● Indicates recommended size

- Conductors in conduit or service entrance cable to weatherhead. Size all customer service entrance conductors to rated ampacity of the main breaker or the fused disconnect.
- Meter base – This is for installation of a single set of service entrance conductors. For other applications, please contact Duke Energy.
- Underground meter base must be minimum 200AMP
- The ground wire from your main panel to the ground rod must be continuous. Duke Energy recommends that the ground wire not be routed through the meter base. If it is routed through the meter base, however, please be sure that:
  - a) the ground wire is not connected to the meter base, and
  - b) the ground wire is installed in a conduit from meter base to ground in accordance with National Electric Code requirements. For more information, please refer to NEC Article 250-92.



- Duke Energy's service conductors
- Alternate route for service entrance conductors

All equipment must be in good condition and installed to meet National Electrical Code requirements.

**in Indiana 800-382-5544 "call before you dig"**