

618

120/240 VOLT, SINGLE-PHASE, THREE-WIRE UNDERGROUND (GREATER THAN 200 AMPERES BUT NOT EXCEEDING 400 AMPERES)

REVISED 4/07

APPLICATIONS - 400 AMPERES MAXIMUM WHEN APPROVED BY POWER DELIVERY
OUTDOOR METER LOCATION REQUIRED ON ALL NEW INSTALLATIONS

ALL EQUIPMENT & CONDUCTORS SHOWN
ARE FURNISHED & INSTALLED
BY THE CUSTOMER.

ALL SERVICE CONDUCTOR CONNECTIONS IN THE
METER SOCKET AND SERVICE DISCONNECT(S) OR
SERVICE PANELBOARD(S) MUST BE TORQUED
TO THE MANUFACTURER'S SPECIFICATIONS
LABEL FOUND ON THE EQUIPMENT.

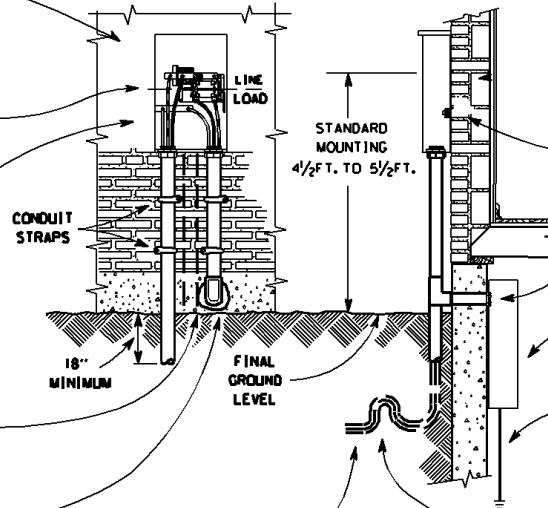
WHEN ALUMINUM CONDUCTORS ARE INSTALLED
ALL CONNECTIONS IN THE METER SOCKET MUST
BE PROPERLY COATED WITH AN INHIBITOR
COMPOUND. IT IS HIGHLY RECOMMENDED TO USE
THE INHIBITOR COMPOUND ON THE CONDUCTOR
CONNECTIONS IN THE SERVICE DISCONNECT
OR SERVICE PANELBOARD.

LOAD CONDUCTORS CAN TERMINATE IN 1 OR 2
SERVICE DISCONNECTS OR PANELBOARDS.
REFER TO THE N.E.C. FOR CODE RULES
REGARDING PARALLELED CONDUCTORS.

THE HOLE WHERE THE SERVICE RACEWAYS
OR SERVICE CABLES ENTER THE BUILDING
MUST BE SEALED TO PREVENT WATER, RODENTS
OR INSECTS FROM ENTERING THE BUILDING.

FRONT VIEW (COVER REMOVED)

WALL SECTION



THE GROUNDED SERVICE NEUTRAL CONDUCTOR CONNECTED
TO THE NEUTRAL BUS IN THE METER SOCKET BONDS
THE SOCKET TO THE SERVICE GROUNDING SYSTEM.

APPROVED BONDING OF A METALLIC RACEWAY IS
REQUIRED. LOCKNUTS, APPROVED FITTINGS OR
BONDING BUSHINGS ARE REQUIRED WHEN
INSTALLING METALLIC OR NON-METALLIC RACEWAYS.

THE SERVICE DISCONNECTING MEANS AND
OVERCURRENT PROTECTION ENCLOSURE.

APPROVED GROUNDING
(SEE DRAWING 6361)

INSTALL SUFFICIENT CABLE SLACK AT THE
FOUNDATION TO ALLOW FOR SETTLING
OF THE EARTH ON DIRECT BURIED CABLES.
CABLE SLACK IS REQUIRED TO REDUCE HEAVY
TENSIONS ON THE INSULATED BLOCKS OF
THE METER SOCKET JAWS.

THE INSTALLATION REQUIREMENTS & APPROVAL
OF THE SERVICE LATERAL (DEPTH, AMPACITY,
TYPE, ETC.) ARE UNDER THE JURISDICTION
OF THE LAWFULLY-DESIGNATED ELECTRICAL
INSPECTOR FOR THE GEOGRAPHICAL AREA.

(SEE ARTICLES 311 AND 312 FOR ADDITIONAL
INFORMATION ON UNDERGROUND SERVICE LATERALS)