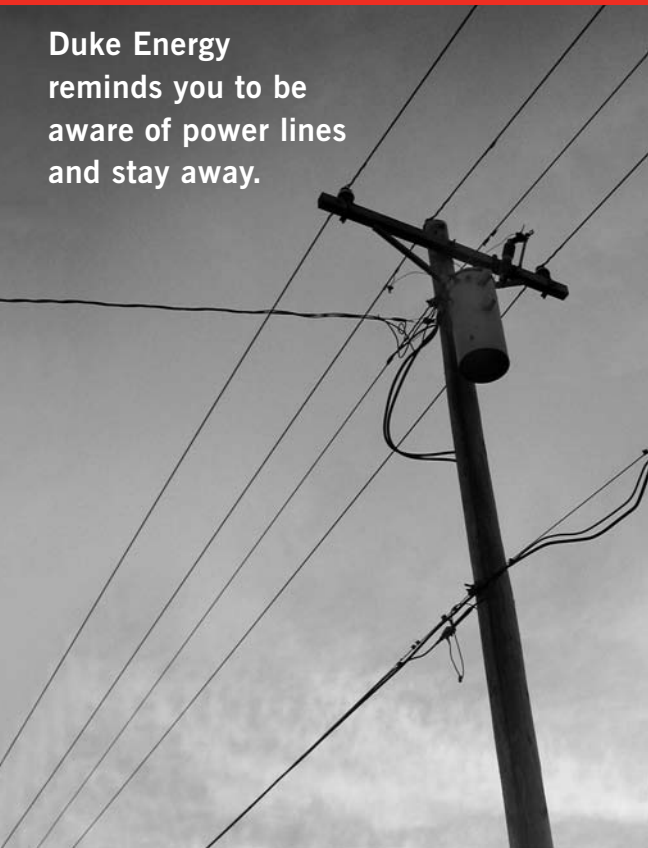


# Overhead Power Line Safety

Duke Energy reminds you to be aware of power lines and stay away.



**Power lines carry thousands of volts of electricity and are not insulated. Both direct and indirect contact can be instantly fatal.**

- If you see a sagging or downed power line, assume it is energized and immediately call Duke Energy at 800.769.3766. Do not attempt to move the line or any object that may be in direct contact with it.
- Never attempt to remove tree limbs that are growing near or into power lines. Instead call Duke Energy's toll-free Customer Service number, 800.777.9898 for assistance.
- Plan carefully when planting vegetation near power lines. Avoid planting trees that will mature to a large size and eventually interfere with electrical conductors or equipment.
- When working with a ladder, make sure its distance from any power line is 10 feet or twice its length - whichever is greater.
- When installing or removing an antenna, make sure its distance from any power line is 10 feet or twice its total height - whichever is greater. If the antenna starts to fall, let it go and stay clear.
- Fly kites in open areas away from power lines and busy streets, using a non-metallic string. If the kite or any like-object is moving toward a power line, let go of the string immediately.
- Never climb a utility pole in an attempt to remove an entangled object (tree limb, kite, model airplane, etc.) from a power line. Call Duke Energy for safe removal.
- Before installing a pool, contact Duke Energy to help determine the safest location with regard to electric lines. With existing pools, be aware of power lines whenever using long-handled pool cleaners or rescue poles.