

631

REVISED 4/07

208Y/120 VOLT, THREE-PHASE, FOUR-WIRE * TYPICAL MULTIPLE METERING INSTALLATION

THE WIRE TROUGH MUST BE EQUIPPED WITH SEALING PROVISIONS TO ACCOMMODATE COMPANY SEALING PROVISIONS.

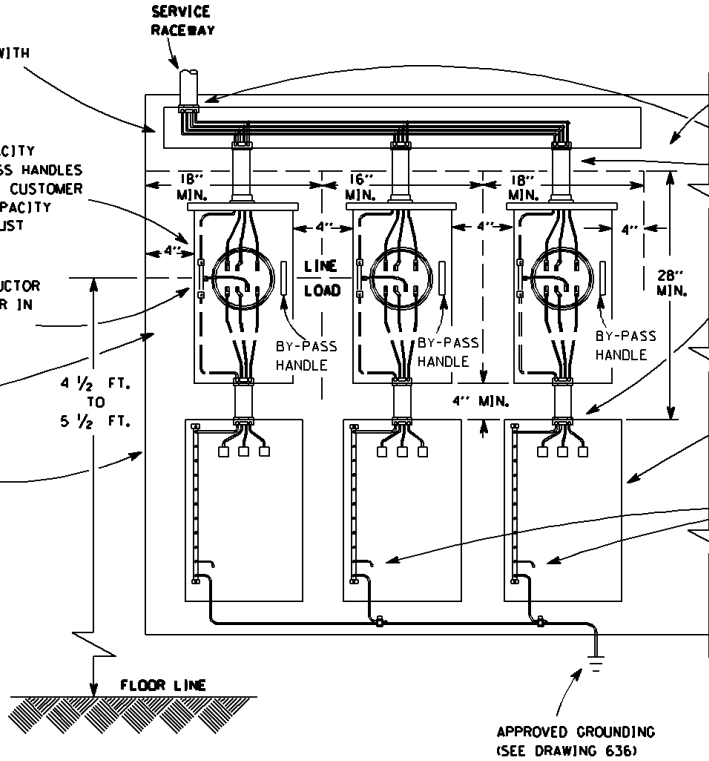
SEVEN-TERMINAL POLYPHASE HIGH CAPACITY METER SOCKETS EQUIPPED WITH BY-PASS HANDLES ARE FURNISHED AND INSTALLED BY THE CUSTOMER AND MUST BE MOUNTED PLUMB. THE AMPACITY OF THE LINE AND LOAD CONDUCTORS MUST NOT EXCEED 200 AMPERES.

THE GROUNDED SERVICE NEUTRAL CONDUCTOR CONNECTED TO THE NEUTRAL CONNECTOR IN THE METER SOCKET BONDS THE SOCKET TO THE SERVICE GROUNDING SYSTEM.

A CLEAR SPACE AT LEAST 20" WIDE BY 28" HIGH MUST BE AVAILABLE FOR EACH METER SOCKET.

WHERE REQUIRED A SERVICE EQUIPMENT BOARD MUST BE MOUNTED PLUMB. (SEE ARTICLE 508)

WHEN ALUMINUM CONDUCTORS ARE INSTALLED ALL CONNECTIONS IN THE METER SOCKET MUST BE PROPERLY COATED WITH AN INHIBITOR COMPOUND. IT IS HIGHLY RECOMMENDED TO USE THE INHIBITOR COMPOUND ON THE CONDUCTOR CONNECTIONS IN THE SERVICE DISCONNECT OR SERVICE PANELBOARD.



ADDITIONAL SOCKETS MAY BE ADDED, HOWEVER THIS ARRANGEMENT IS LIMITED TO SIX SERVICE DISCONNECTS BEHIND THE METER SOCKETS. (SEE NEC)

LOCKNUTS AND APPROVED FITTINGS OR BONDING BUSHINGS ARE REQUIRED WHEN INSTALLING METALLIC OR NON-METALLIC NIPPLES. BONDING OF THE METALLIC COMPONENTS IS REQUIRED.

ALL SERVICE CONDUCTOR CONNECTIONS IN THE METER SOCKET & SERVICE DISCONNECT OR SERVICE PANELBOARD MUST BE TORQUED TO THE MANUFACTURER'S SPECIFICATIONS LABEL FOUND ON THE EQUIPMENT.

THE SERVICE DISCONNECTING MEANS AND OVERCURRENT PROTECTION ENCLOSURE, THE GROUNDED SERVICE NEUTRAL CONDUCTOR MUST TERMINATE IN THE SERVICE DISCONNECTING MEANS ENCLOSURE.

THE ENCLOSURES ARE BONDED TO THE SERVICE SYSTEM GROUND BY A MAIN BONDING JUMPER OR A BONDING SCREW.

* AN INDOOR LOCATION OF A METER SOCKET IS NOT PERMITTED ON NEW INSTALLATIONS, UNLESS MANDATED BY A COMMUNITY ORDINANCE.