

630

REVISED 2/03

**208Y/120 VOLT, SINGLE-PHASE, THREE-WIRE \*  
 TYPICAL MULTIPLE METERING INSTALLATION  
 (FROM A THREE-PHASE FOUR WIRE SYSTEM)  
 WHERE THE MAIN SERVICE DISCONNECT IS REQUIRED ON THE  
 SUPPLY SIDE OF THE METERING EQUIPMENT (SEE NEC)**

\* AN INDOOR LOCATION OF A METER SOCKET IS NOT PERMITTED ON NEW INSTALLATIONS, UNLESS MANDATED BY A COMMUNITY ORDINANCE.

NOT LESS THAN 9" OF FREE SPACE IS REQUIRED, FROM THE CENTER OF THE LAST METER SOCKET TO THE END OF THE SERVICE EQUIPMENT BOARD OR TO OTHER EQUIPMENT.

THE FIVE TERMINAL METER SOCKETS ARE FURNISHED AND INSTALLED BY THE CUSTOMER AND MUST BE MOUNTED PLUMB.

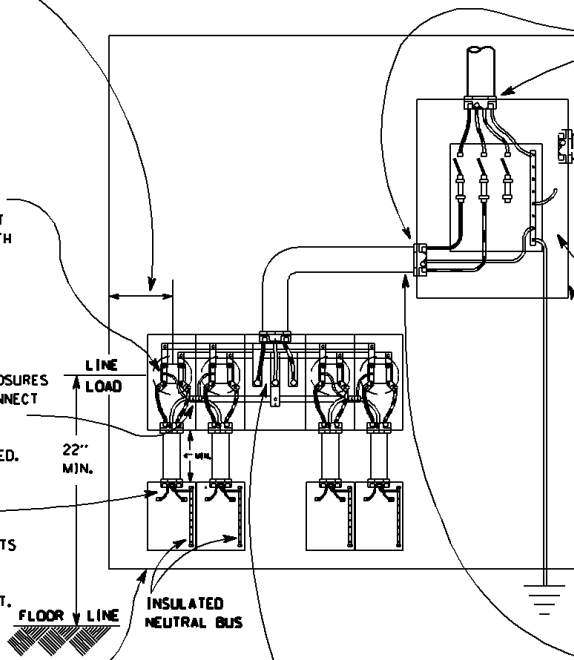
THE FIFTH TERMINAL MUST BE MOUNTED ON THE LEFT SIDE ON EACH SOCKET, AS SHOWN, AND MUST BE CONNECTED TO THE METERING CONNECTOR WITH NO. 10AWG COPPER INSULATED CONDUCTOR, SUPPLIED AND INSTALLED BY THE CUSTOMER.

THE GROUNDED CIRCUIT NEUTRAL CONDUCTOR IS PERMITTED TO GROUND THE METER SOCKET ENCLOSURES ON THE LOAD SIDE OF THE MAIN SERVICE DISCONNECT WHEN THE ENCLOSURES ARE LOCATED NEAR THE SERVICE DISCONNECTING MEANS & WHERE NO SERVICE GROUND FAULT PROTECTION IS INSTALLED.

THE AMPACITY OF THE LOAD SIDE CONDUCTORS MUST NOT EXCEED 200 AMPERES.

ALL SERVICE CONNECTIONS IN THE METER SOCKETS & SERVICE DISCONNECT OR PANELBOARD MUST BE TORQUED TO THE MANUFACTURER'S SPECIFICATIONS LABEL FOUND ON THE EQUIPMENT.

FEEDER OVERCURRENT PROTECTION DEVICE OR PANELBOARD



LINE  
LOAD  
22" MIN.

FLOOR LINE  
INSULATED NEUTRAL BUS

THE FEEDER CABLE BUS ON THE LINE SIDE OF THE METER TROUGH MUST BE CONTINUOUS & WITHOUT SPLICE FROM THE LOAD CONNECTORS OF THE SERVICE DISCONNECTING MEANS.

LOCKNUTS & APPROVED FITTINGS OR BUSHINGS REQUIRED WHEN INSTALLING METALLIC OR NON-METALLIC RACEWAYS. A METALLIC RACEWAY MUST BE BONDED TO THE SERVICE DISCONNECT ENCLOSURE.

ADDITIONAL METER SOCKETS MAY BE CONNECTED TO OTHER OUTLETS FROM THE MAIN DISCONNECT ENCLOSURE.

WHEN ALUMINUM CONDUCTORS ARE INSTALLED ALL CONNECTIONS IN THE METER SOCKET MUST BE PROPERLY COATED WITH AN INHIBITOR COMPOUND. IT IS HIGHLY RECOMMENDED TO USE THE INHIBITOR COMPOUND ON THE CONDUCTOR CONNECTIONS IN THE SERVICE DISCONNECT OR SERVICE PANELBOARD.

THE ENCLOSURE IS BONDED TO THE SERVICE SYSTEM GROUND BY A MAIN BONDING JUMPER OR A BONDING SCREW.

THE MAIN SERVICE DISCONNECTING MEANS AND OVERCURRENT PROTECTION AS REQUIRED BY THE LAWFULLY-DESIGNATED ELECTRICAL INSPECTOR FOR THE GEOGRAPHICAL AREA.

WHERE REQUIRED, SERVICE EQUIPMENT BOARD MUST BE MOUNTED PLUMB. (SEE ARTICLE 508)

APPROVED GROUNDING (SEE DRAWING 636)

METALLIC OR NON-METALLIC NIPPLES