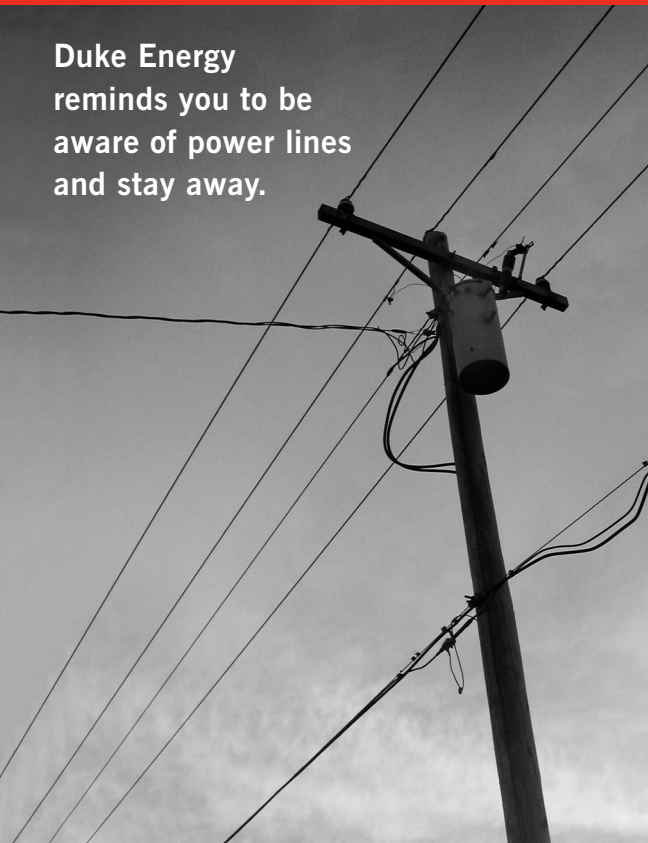


# Overhead Power Line Safety

Duke Energy reminds you to be aware of power lines and stay away.



**Power lines carry thousands of volts of electricity and are not insulated. Both direct and indirect contact can be instantly fatal.**

- If you see a sagging or downed power line, assume it is energized and immediately call Duke Energy at 800-769-3766. Do not attempt to move the line or any object that may be in direct contact with it.
- Never attempt to remove tree limbs that are growing near or into power lines. Instead call Duke Energy's toll-free Customer Service number, 800-777-9898 for assistance.
- Plan carefully when planting vegetation near power lines. Avoid planting trees that will mature to a large size and eventually interfere with electrical conductors or equipment.
- When working with a ladder, make sure its distance from any power line is 10 feet or twice its length - whichever is greater.
- When installing or removing an antenna, make sure its distance from any power line is 10 feet or twice its total height - whichever is greater. If the antenna starts to fall, let it go and stay clear.
- Fly kites in open areas away from power lines and busy streets, using a non-metallic string. If the kite or any like-object is moving toward a power line, let go of the string immediately.
- Never climb a utility pole in an attempt to remove an entangled object (tree limb, kite, model airplane, etc.) from a power line. Call Duke Energy for safe removal.
- Before installing a pool, contact Duke Energy to help determine the safest location with regard to electric lines. With existing pools, be aware of power lines whenever using long-handled pool cleaners or rescue poles.



[www.duke-energy.com](http://www.duke-energy.com)

03/09C

